

Emax power circuit-breakers

Emax E4

Common data

UL 1066	
Rated voltage	600 V AC
Rated maximum voltage	635 V AC
Test voltage (1 min. 50/60 Hz)	2.2 kV
Frequency	50 - 60 Hz
Number of poles	3 - 4
Version	Fixed (F) - Drawout (W)



Type of circuit-breaker

Level of performance

		Emax E4				
		S-A	H-A	V-A	L-A	H-A/f ⁽¹⁾
Frame size	[A]	3200	3200	3200	3200	3200
	[A]	3600	3600	3600	3600	3600
	[A]	—	—	—	—	—
	[A]	—	—	—	—	—
	[A]	—	—	—	—	—
	[A]	—	—	—	—	—
Capacity of neutral pole for 4 pole circuit-breakers	[% I _n]	50	50	50	50	100
Rated short circuit current	240 V	[kA]	85	100	100	125
	480 V	[kA]	65	85	100	125
	600 V	[kA]	65	85	100	100
Rated short time current (1s)		[kA]	65	85	100	100

Trip units

Electronic adjustable (dip switch)	PR121	•	•	•	•	•
Electronic adjustable (keypad+LCD display)	PR122	•	•	•	•	•
Electronic adjustable (keypad+LCD display+measuring)	PR123	•	•	•	•	•

Trip times

Make time (max)	[ms]	80	80	80	80	80
Break time (I < ST current) (max)	[ms]	70	70	70	70	70
Break time (I > ST current) (max)	[ms]	30	30	30	30	30

Mechanical and electrical life with regular ordinary maintenance

Mechanical life	[No. Operations x 1000]	8
Operation frequency	[Operations / hour]	30
Electrical life	[No. Operations x 1000]	5
Operation frequency	[Operations / hour]	30

Weights (circuit breaker complete with trip unit, Horz. rear terminals, CS. Excluding accessories)

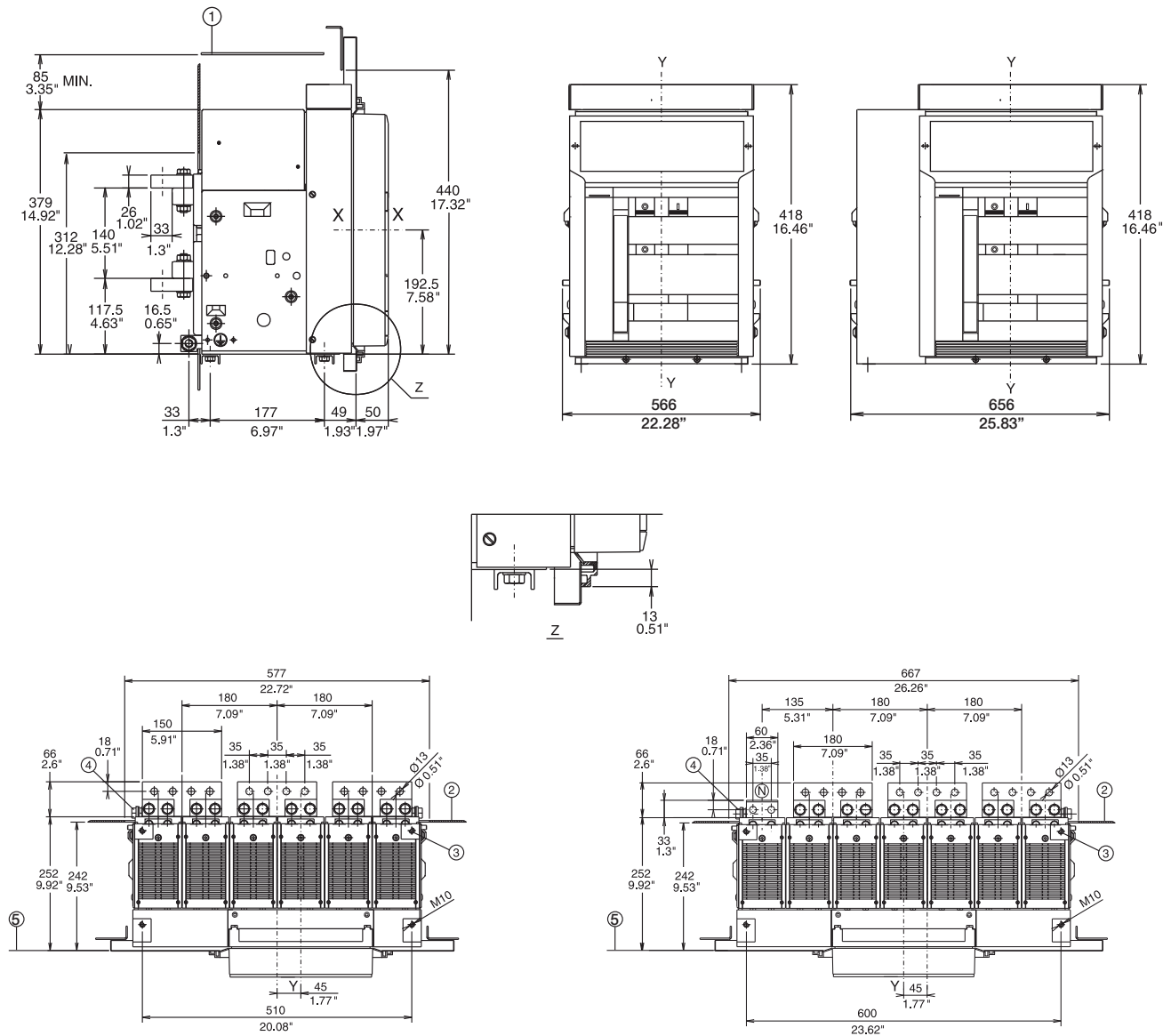
Fixed (3p/4p)	[kg]	97/117 (125 for E4H-A/f)
	[lbs]	214/258 (276 for E4H-A/f)
Draw out (3p/4p)	[kg]	147/165 (200 for E4H-A/f)
	[lbs]	324/363 (441 for E4H-A/f)

(1) Available in 4 poles only

Emax power circuit-breakers

Dimensions E4 series

Overall dimensions E4 (FIXED with rear horizontal bus)

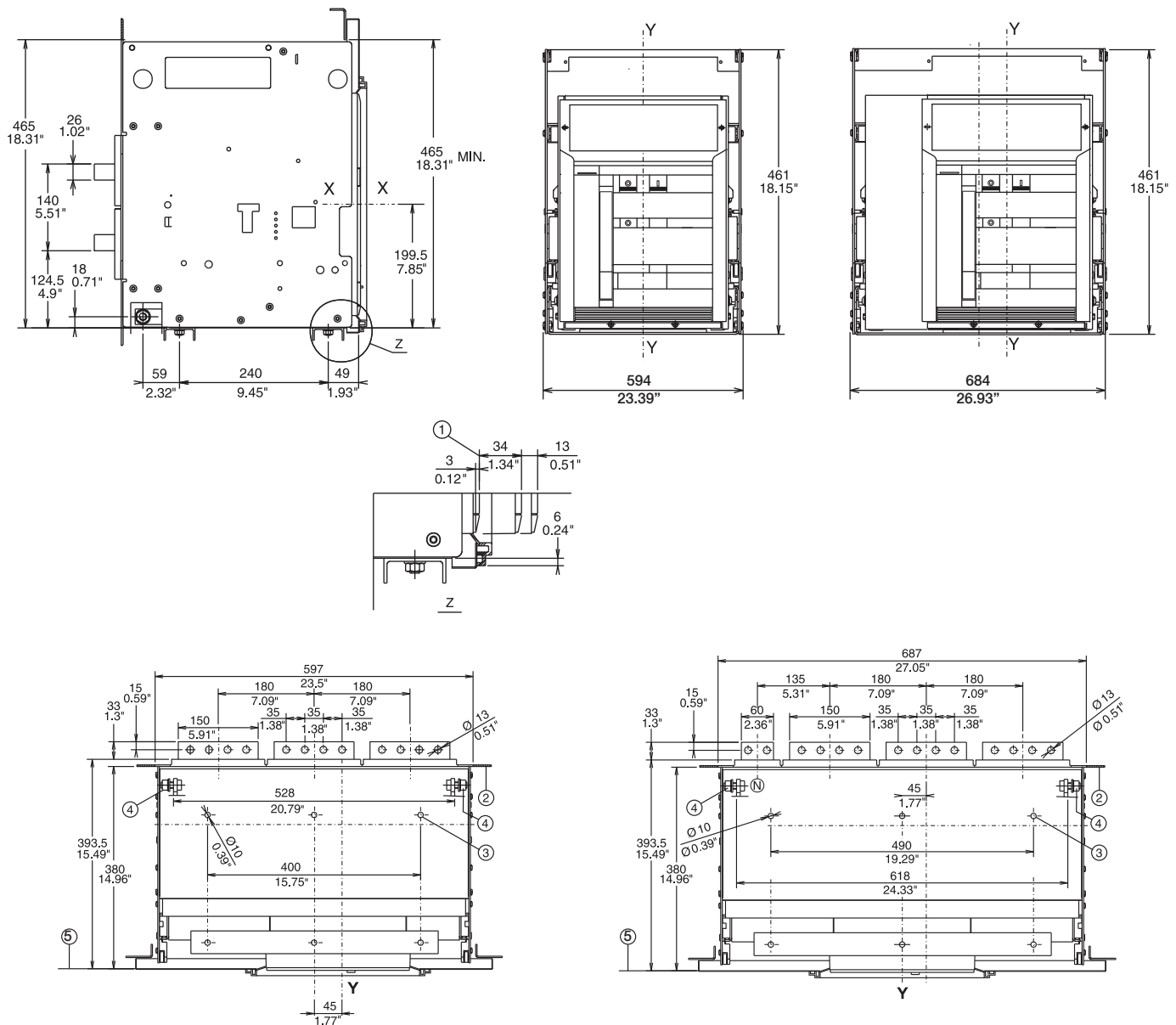


- 1 Insulated wall or insulated metal wall
- 2 Segregation (when provided)
- 3 M10 mounting holes for circuit-breaker (included in the supply)
- 4 1x M12 screw for earthing (included in the supply)
- 5 Inside edge of compartment door

Emax power circuit-breakers

Dimensions E4 series

Overall dimensions E4 (DRAW OUT with rear horizontal bus)



- 1 Distance from connected to testing and isolated.
- 2 Segregation (when provided)
- 3 M8 mounting holes for circuit-breaker (included in the supply)
- 4 1x M12 screw for earthing (included in the supply)
- 5 Inside edge of compartment door

Contact us

Canada

ABB Inc.

Low Voltage Products

2117 – 32nd Avenue

Lachine, QC, CANADA H8T 3J1

Tel.: 514-420-3100

Fax: 514-420-3137

Toll Free: 1-800-567-0283

www.abb.ca

While all care has been taken to ensure that the information contained in this publication is correct, no responsibility can be accepted for any inaccuracy. The Company reserves the right to alter or modify the information contained herein at any time in the light of technical or other developments. Technical specifications are valid under normal operating conditions only. The Company does not accept any responsibility for any misuse of the product and cannot be held liable for indirect or consequential damages.

© Copyright 2011 ABB Inc. All rights reserved.

