

Emax power circuit-breakers

Emax E3

Common data

UL 1066	
Rated voltage	600 V AC
Rated maximum voltage	635 V AC
Test voltage (1 min. 50/60 Hz)	2.2 kV
Frequency	50 - 60 Hz
Number of poles	3 - 4
Version	Fixed (F) - Drawout (W)



Type of circuit-breaker

Level of performance

			Emax E3				
			N-A	S-A	H-A	V-A	X-A
Frame size	[A]		2000	800	800	800	800
			2500	1200	1200	1200	1200
			—	1600	1600	1600	1600
			—	2000	2000	2000	2000
			—	2500	2500	2500	—
			—	3200	3200	3200	—
Capacity of neutral pole for 4 pole circuit-breakers		[% I _n]	100	100	100	100	100
Rated short circuit current	240 V	[kA]	65	85	85	125	200
	480 V	[kA]	50	65	85	125	200
	600 V	[kA]	50	65	85	100	14
Rated short time current (1s)		[kA]	50	65	65	85	14

Trip units

Electronic adjustable (dip switch)	PR121	•	•	•	•	•
Electronic adjustable (keypad+LCD display)	PR122	•	•	•	•	•
Electronic adjustable (keypad+LCD display+measuring)	PR123	•	•	•	•	•

Trip times

Make time (max)	[ms]	80	80	80	80	80
Break time (I < ST current) (max)	[ms]	70	70	70	70	70
Break time (I > ST current) (max)	[ms]	30	30	30	30	30

Mechanical and electrical life with regular ordinary maintenance

Mechanical life	[No. Operations x 1000]	15 ⁽¹⁾
Operation frequency	[Operations / hour]	30
Electrical life	[No. Operations x 1000]	10 ⁽²⁾ / 8 ⁽²⁾ for 2000A and up
Operation frequency	[Operations / hour]	30

Weights (circuit breaker complete with trip unit, Horz. rear terminals, CS. Excluding accessories)

Fixed (3p/4p)	[kg]	66/80 (70/84 for E3X-A)
	[lbs]	145/176 (154/185 for E3X-A)
Draw out (3p/4p)	[kg]	104/125 (106/128 for E3X-A)
	[lbs]	229/275 (233/282 for E3X-A)

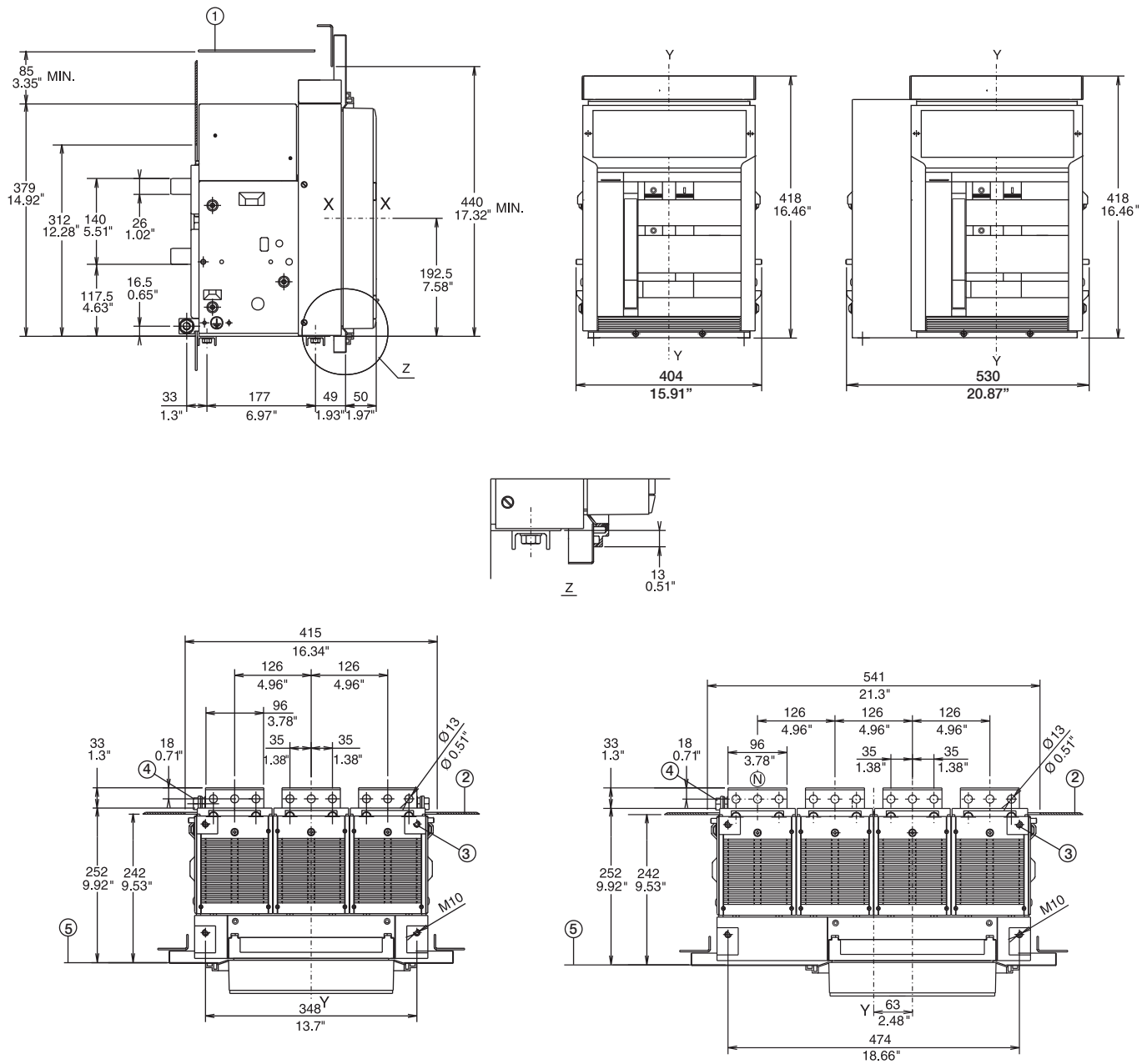
(1) 10 for E3X-A

(2) 1.5 for E3X-A

Emax power circuit-breakers

Dimensions E3 series

Overall dimensions E3 (FIXED with rear horizontal bus)



- 1 Insulated wall or insulated metal wall
- 2 Segregation (when provided)
- 3 M10 mounting holes for circuit-breaker (included in the supply)
- 4 1x M12 screw for earthing (included in the supply)
- 5 Inside edge of compartment door

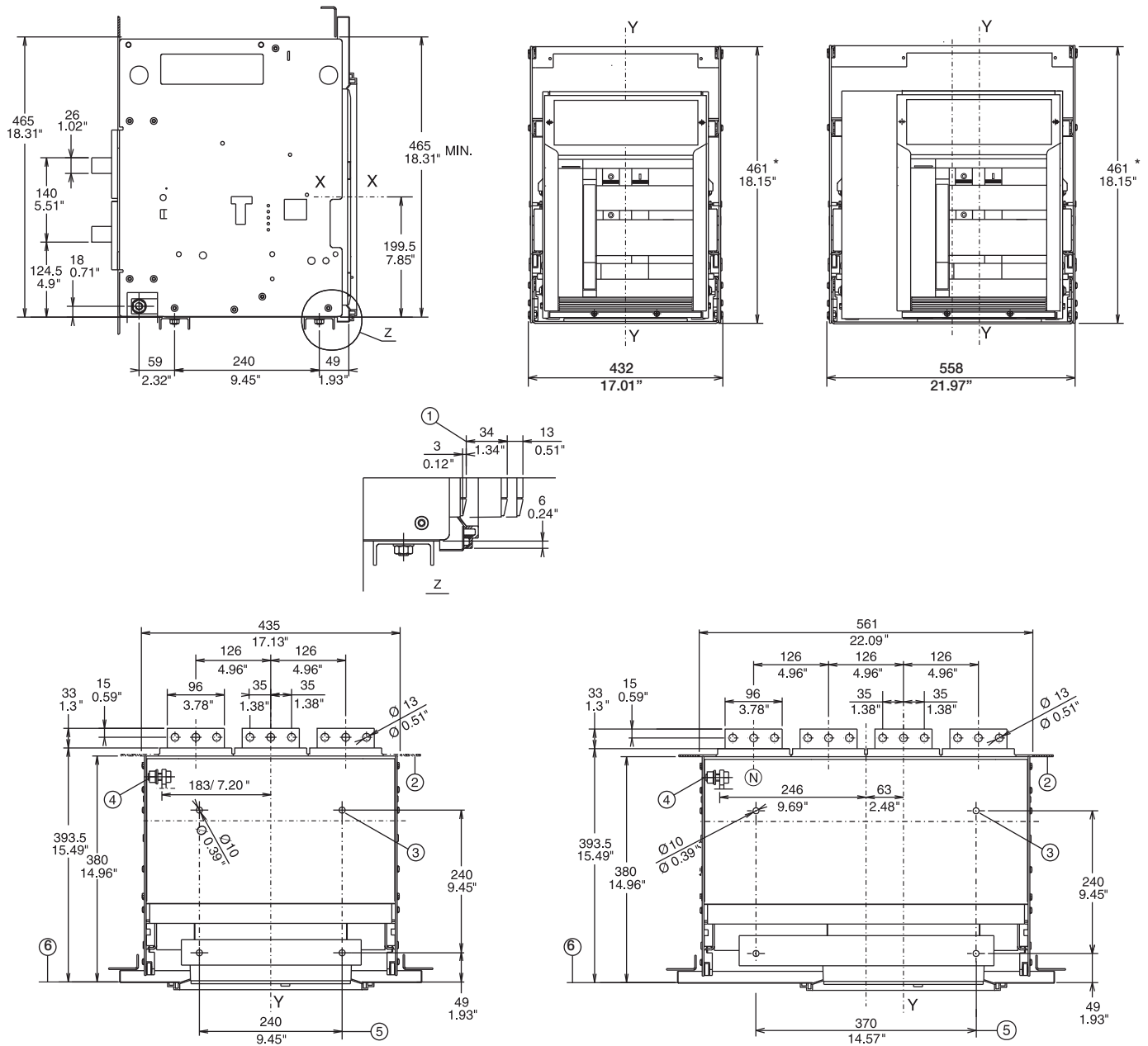
Power and productivity
for a better world™



Emax power circuit-breakers

Dimensions E3 series

Overall dimensions E3 (DRAW OUT with rear horizontal bus)



- 1 Distance from connected to testing and isolated.
 - 2 Segregation (when provided)
 - 3 M8 mounting holes for circuit-breaker (included in the supply)
 - 4 1x M12 screw for earthing (included in the supply)
 - 5 4 holes for mounting fixed part (standard)
 - 6 Inside edge of compartment door
- * For E3X-A: 481 / 18.94"

Contact us

Canada

ABB Inc.

Low Voltage Products

2117 – 32nd Avenue

Lachine, QC, CANADA H8T 3J1

Tel.: 514-420-3100

Fax: 514-420-3137

Toll Free: 1-800-567-0283

www.abb.ca

While all care has been taken to ensure that the information contained in this publication is correct, no responsibility can be accepted for any inaccuracy. The Company reserves the right to alter or modify the information contained herein at any time in the light of technical or other developments. Technical specifications are valid under normal operating conditions only. The Company does not accept any responsibility for any misuse of the product and cannot be held liable for indirect or consequential damages.

© Copyright 2011 ABB Inc. All rights reserved.

