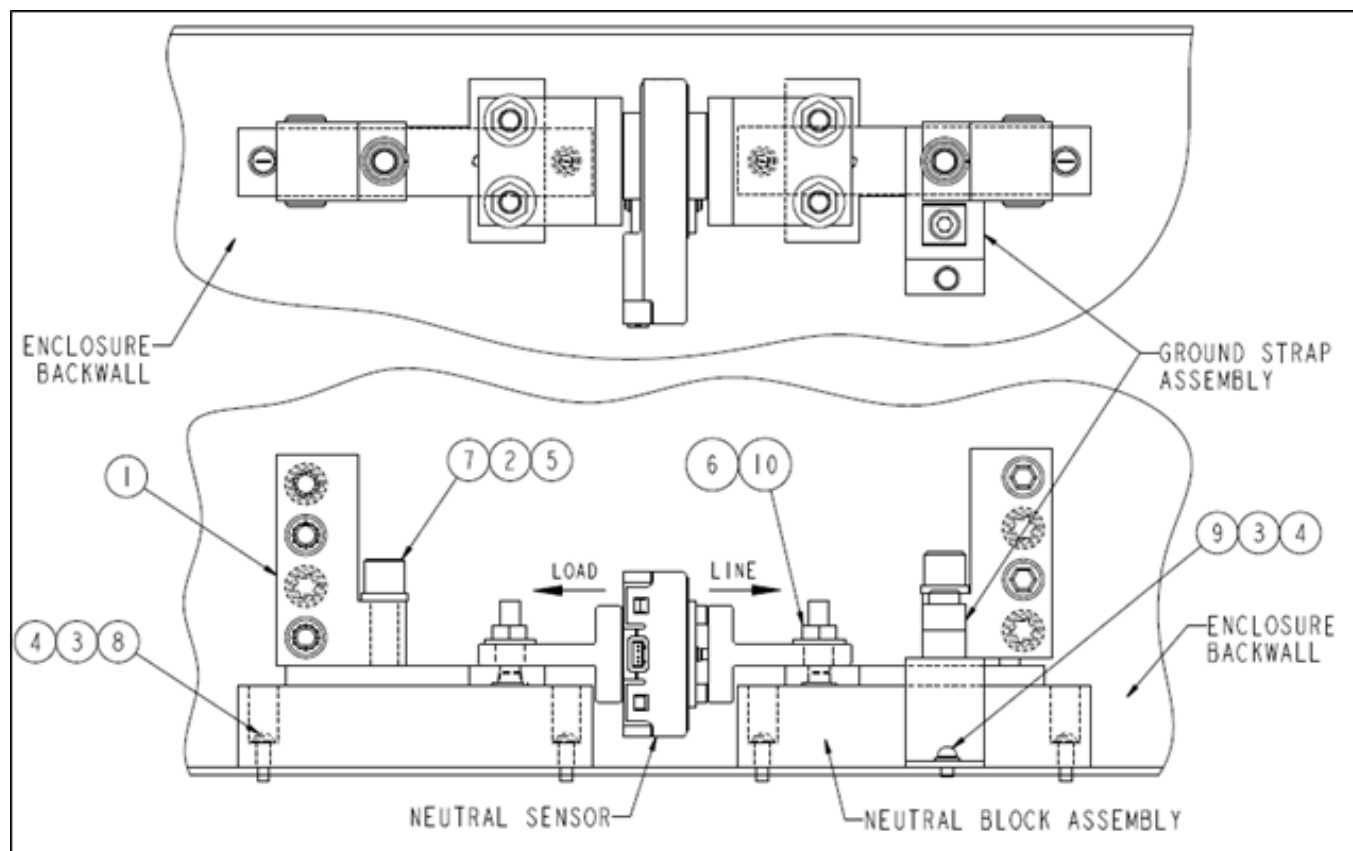


Ground Fault Neutral Transformers

For Cat. No. 1SQA001289R0001 (TNIA1200XTGF*)



DESCRIPTION

The 1SQA001289R0001 (TNIA1200XTGF*) is 600 volt maximum insulated mounting bases for installing ground fault neutral sensors in circuit breaker enclosures. These mounting bases are solely for mounting neutral sensors as shown in the table on the reverse side of this sheet.

NOTE: * - Applicable for UL Recognized catalog numbers with UR suffix also .

KIT CONTENTS

- (2) Neutral Block Assembly
- (2) Lugs (see table)
- (1) Ground Strap Assembly
- (2) $\frac{1}{2}$ -13 x 1 $\frac{3}{4}$ " screws
- (4) # 12-24 x $\frac{3}{4}$ " screws
- (1) # 12-24 x $\frac{3}{8}$ " screw
- (2) $\frac{1}{2}$ Belleville washers
- (2) $\frac{1}{2}$ Lockwashers
- (5) # 12 Flat washers
- (5) # 12 Lock washers
- (4) $\frac{3}{8}$ -16 Nuts
- (4) $\frac{3}{8}$ Belleville washers

Device Description	Amp Rating	Ground Fault Neutral Sensor Catalog Number	Connector Wire Size
1SQA001289R0001 (TNIA1200XTGF*)	800	1SDA107671R1 (600A) 1SDA105158R1 (800A) 1SDA105159R1 (1000A)	(3) 250-500 MCM CU/AL
	1200	1SDA082134R1	(4) 250-350 MCM CU (4) 250-500 MCM AL

INSTALLATION

1. Mount the two identical neutral block assemblies to the enclosure back wall with four screws (8), flat washers (3), and lock washers (4). Torque to 35-30 inch-pounds.
2. Install the ground fault neutral transformer over studs provided on the mounting bases, with four nuts (10), and Belleville washers (6). Torque to 250-300 inch-pounds.

IMPORTANT

Be sure line side of neutral content transformer is mounted facing line or supply side neutral cables.

3. For service equipment applications:
Mount ground strap assembly and two pre-wired lugs (1) to the neutral blocks with two screws (7), flat washers (5) and lock washers (2). Torque to 275 inch-pounds.

NOTE: * - Applicable for UL Recognized catalog numbers with UR suffix also.

Attach ground strap assembly to the enclosure with one screw (9), flat washer(3) and lock washer (4). Torque to 20 inch-pounds.

For non-service equipment applications:
Mount two pre-wired lugs(1) to the neutral blocks with two screws (7), flat washers (5) and lock washers (2). Torque to 275 inch-pounds..

4. Refer to instructions packed with breaker before making control wire terminations.



CAUTION

Bond neutral only on line side of ground fault neutral transformer. If neutral becomes grounded on the load side, partial or complete desensitization of ground fault detection circuitry will result. Be careful to keep control wires away from moving mechanism parts. (Accidental shorting or grounding of control wires may cause breaker to trip).

These instructions do not purport to cover all details or variations in equipment nor to provide for every possible contingency to be met In connection with installation operation or maintenance. Should further information be desired or should particular problems arise which are not covered sufficiently for the purchaser's purposes. the matter should be referred to the ABB Company.