

NOTES:
2.SEE OUTLINE DRAWING 10054384SH1.
1.DIMENSIONS IN BRACKETS ARE IN [MILLIMETERS].

ABB

POWER BREAK II CIRCUIT BREAKER
TPLUGA08 ON 800A LUG ADAPTER KIT

THIRD ANGLE	SHEET#	DWG NO.	DATE	REV
	1 of 5	GEM3026	27-Oct-22	B




REF: TPLUG108 WIRE RANGE EQUALS 3/0 TO 800 KCMIL

NOTES:

3.SEE OUTLINE DRAWING 10054384SH2.
2.DIMENSIONS IN BRACKETS ARE IN [MILLIMETERS].
1.TPLUGA16 KITS FITS ON LINE OR LOAD SIDE OF ALL 1600A POWER BREAK OR POWER BREAK II
CIRCUIT BREAKERS.

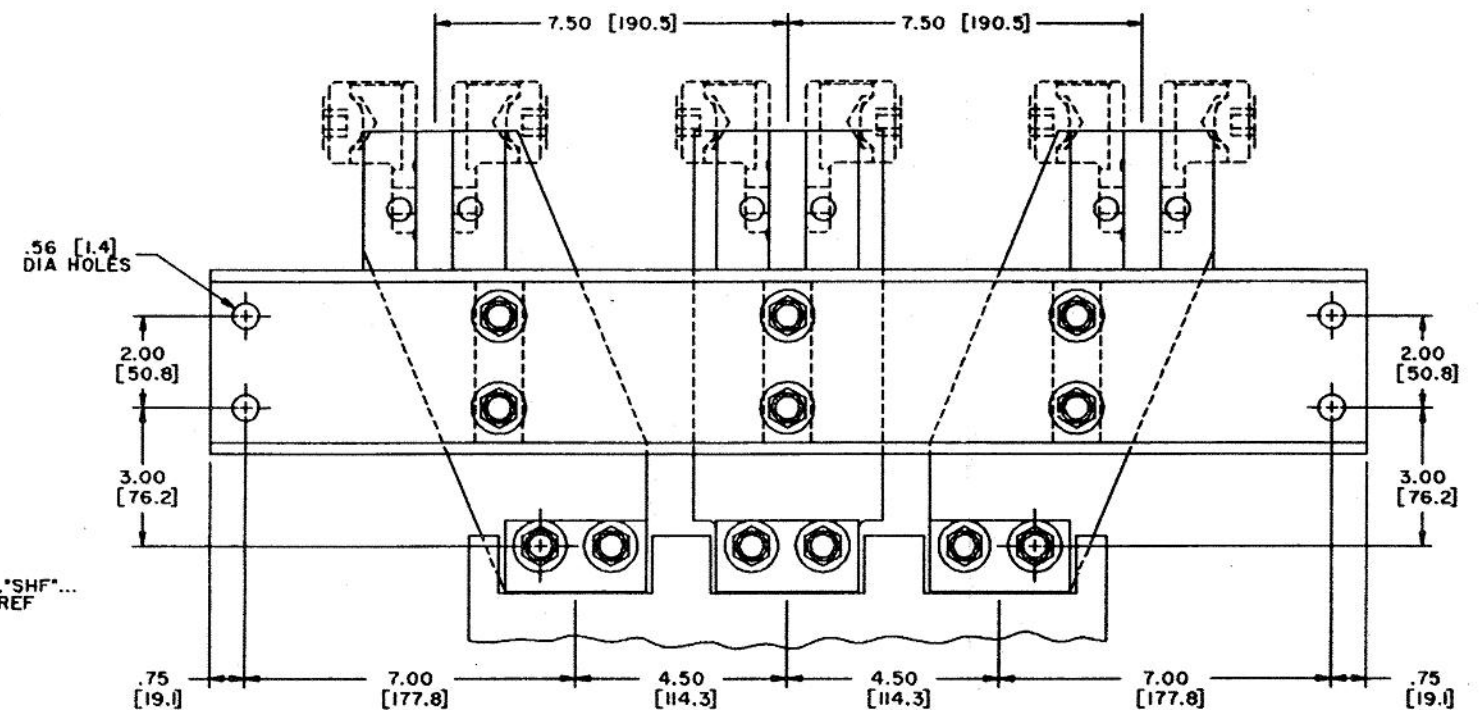
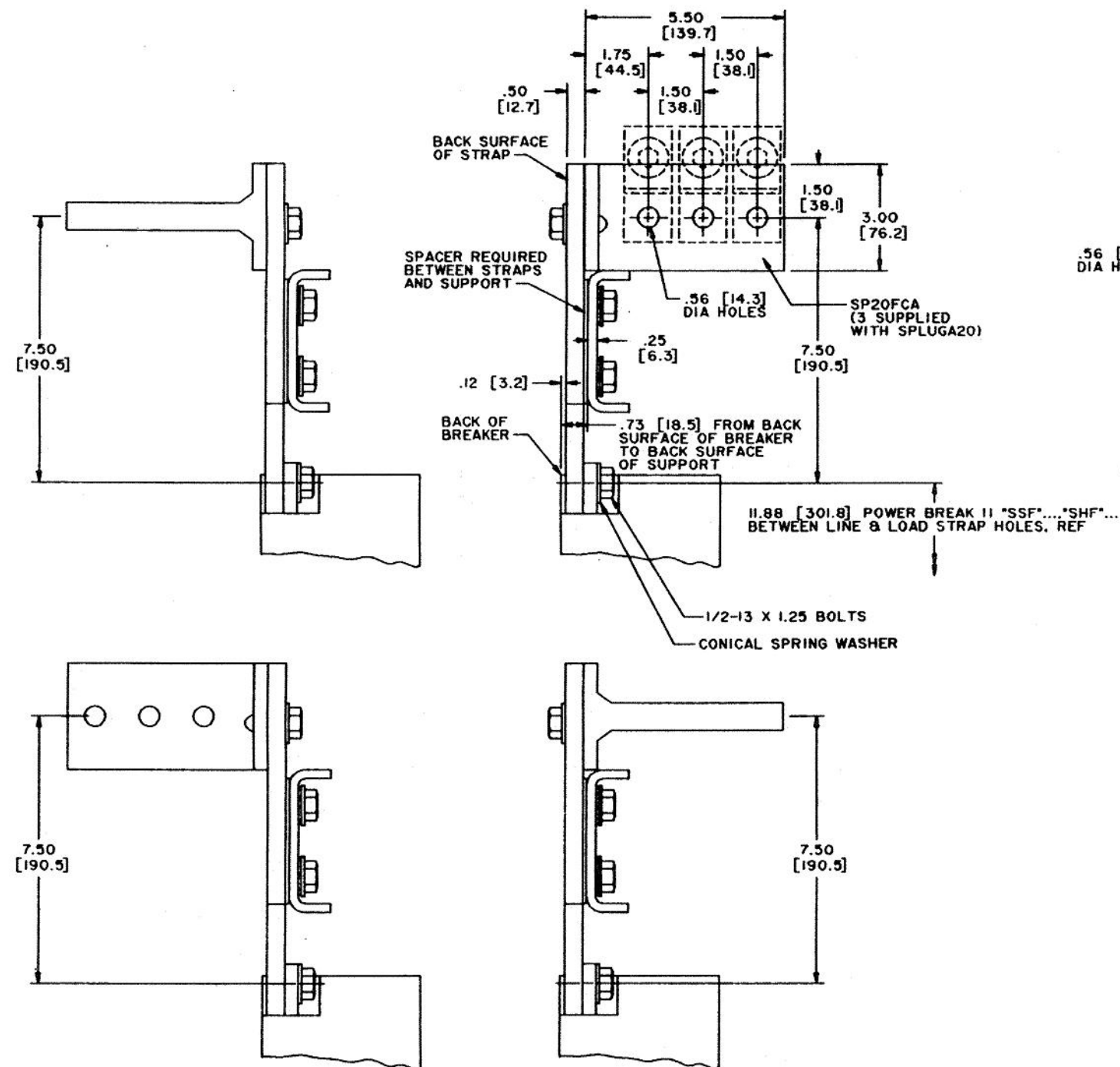
ABB

POWER BREAK II CIRCUIT BREAKER
TPLUGA16 ON 1600A LUG ADAPTER KIT

THIRD ANGLE	SHEET#	DWG NO.	DATE	REV
	2 of 5	GEM3026	27-Oct-22	B

T-STUDS ACCEPT UP TO SIX LUGS:
GE CAT. NO. TPLUG108 OR,
ANDERSON NO. VCEL-075-12HI OR,
EQUIVALENT (NOT SUPPLIED WITH SPLUGA20 KIT)

REF: TPLUG108 WIRE RANGE EQUALS 3/0 TO 800 KCMIL



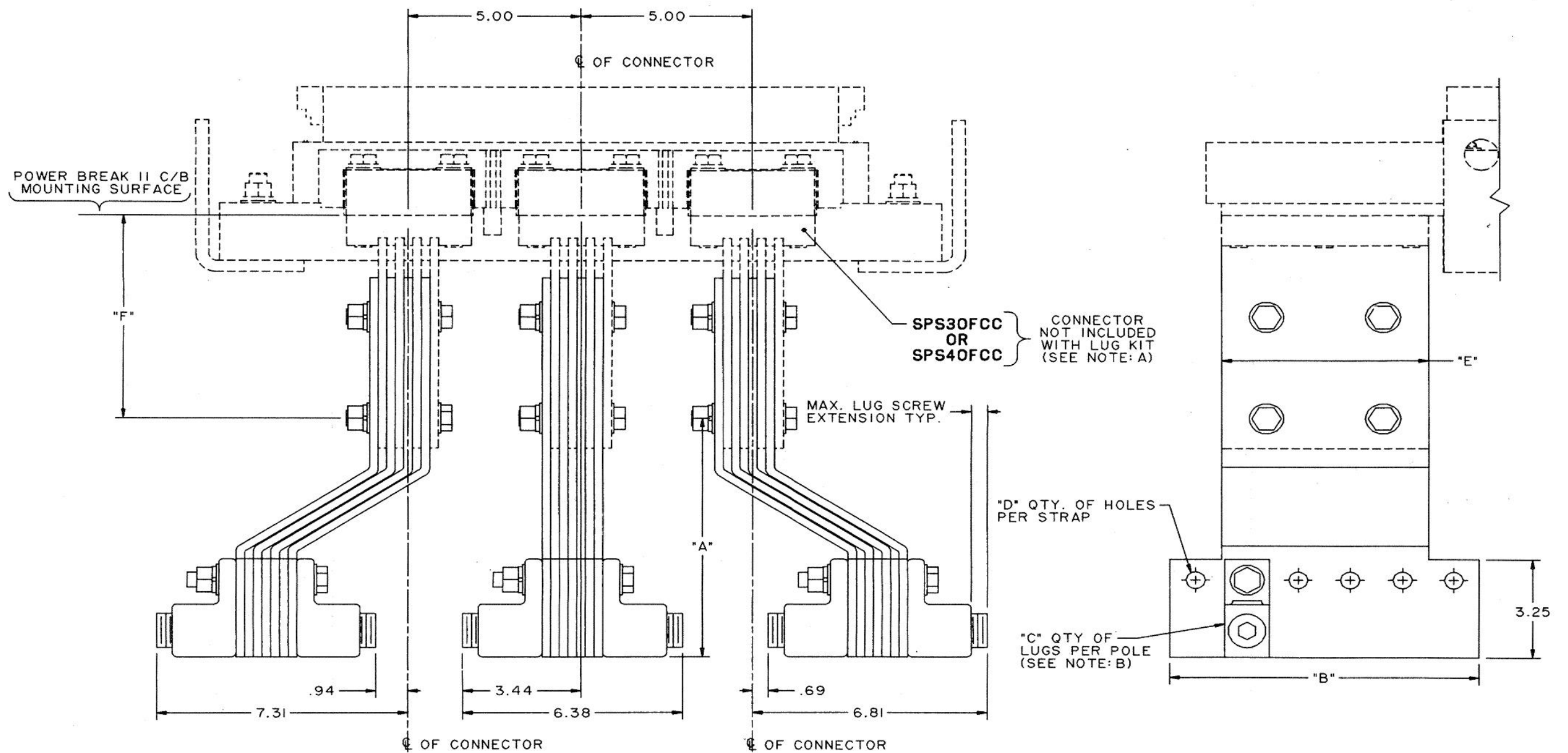
NOTES:

1. SPLUGA20 KIT FITS ON LINE OR LOAD SIDE OF ALL 2000A POWER BREAK II CIRCUIT BREAKERS. DOES NOT FIT ON ORIGINAL POWER BREAK 2000A CIRCUIT BREAKER
2. DIMENSIONS IN BRACKETS ARE IN [MILLIMETERS].
3. SEE OUTLINE DRAWING 10054384SH3.

ABB

POWER BREAK II CIRCUIT BREAKER
SPLUGA20 ON 2000A LUG ADAPTER KIT

THIRD ANGLE	SHEET#	DWG NO.	DATE	REV
	3 of 5	GEM3026	27-Oct-22	B



END VIEW OF CIRCUIT BREAKER

CAT. NO.	AMPS	"A"	"B"	"C"	"D"	"E"	"F"	USE WITH CONNECTOR CAT. NO.
TSLUG30	3000	7.50	7.50	9	5	4.00	5.31	SPS30FCC (SEE NOTES A & C)
TSLUG40	4000	7.94	9.00	11	6	6.00	6.75	SPS40FCC (SEE NOTE: C)

NOTE:A 3000 AMP BACK CONNECTED C/B HASNON REMOVAL INTEGRAL CONNECTORS.
 NOTE:B LUG KIT CONTAINS COMPLETE 3 POLE LINE OR LOAD CONNECTION AS SHOWN.
 NOTE:C SPS30FCC & SPS40FCC FRONT CONNECTED STUDS FOR USE WITH FRONT CONNECTED
 POWER BREAK II CIRCUIT BREAKERS.
 NOTE:D SEE OUTLINE DRAWING 10055630SH5.

ABB

POWER BREAK II CIRCUIT BREAKER
 TSLUG30-40 LUG KITS

THIRD ANGLE	SHEET#	DWG NO.	DATE	REV
	5 of 5	GEM3026	27-Oct-22	B