

# DEH41552 INSTALLATION INSTRUCTION FOR RIGHT POLE MOUNTING ONLY

## Undervoltage Release Device



**CAUTION:** The device is factory installed in the right pole only. Before inspecting or beginning any maintenance works on the breaker, it must be disconnected from all voltage sources, both power and control, and breaker placed in the off (open).

### NOTES:

- Any work requiring cover removal of a sealed breaker voids **UL** listing. The **UL** label must be destroyed.
- UVR** cannot be installed in breakers code dated with this number or lower: **101**

**This accessory to be installed in Right Pole only.**

### ELECTRICAL DATA

Cat No. (Right Pole Only)	Rated Voltage	MA Current	
		Dc	Ac
TEYXU1	24V Ac	---	100
TEYXU2	48V Ac	---	50
TEYXU3	120V Ac	---	17
TEYXU4*	240V Ac	---	10
TEYXU6	24V Dc	100	---
TEYXU7	48V Dc	50	---
TEYXU8	125V Dc	18	---
TEYXU9*	250V Dc	11	---

\*Rated UVR coils includes externally serious mounted resistor.

### DESCRIPTION

This device is used for automatic breaker tripping when line voltage drops below a pre-determined level.

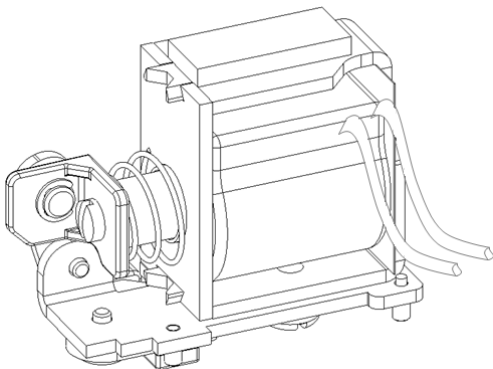


Figure 1.

### STEP 1

#### Breaker Preparation for Field Installation.

Open breaker contacts by moving handle to the breaker "OFF" position as shown in Figure 2.

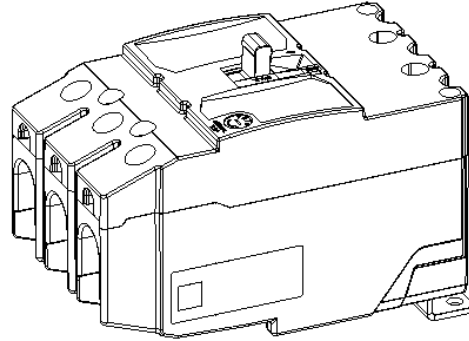


Figure 2.

### STEP 2

#### Removing Cover

Remove breaker cover by removing cover screws as shown in Figure 3. Tar must be removed and discarded to gain access to screw. Remove and save plastic handle and shutter.

Push trip bar towards load end to trip mechanism.

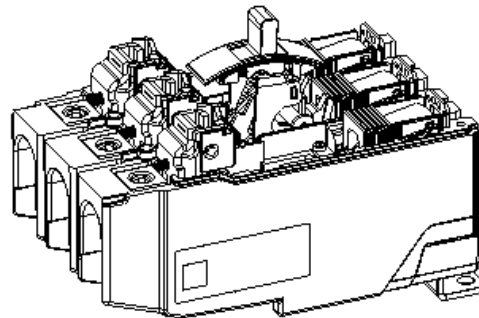
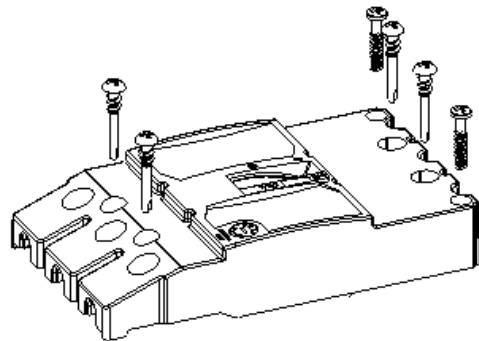
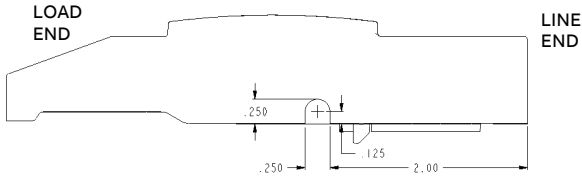


Figure 3.

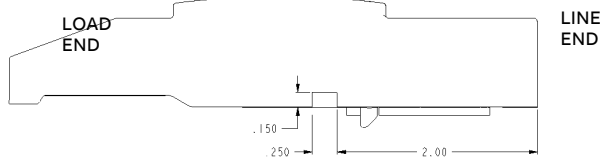
### STEP 3 Cover Modification for Wire Exiting

Perform cover modification as shown in Figure 4.  
Remove all debris.



CUT NOTCH IN RIGHT SIDE

Figure 4a. Side View of Breaker Cover



CUT NOTCH IN RIGHT SIDE

Figure 4b. Side View of Breaker Cover

### STEP 4 Removing Tie Bar

Use #1 Phillips screw driver to remove the tie bar and its mounting screws from right pole as shown in Figure 5.

Save the tie bar and its mounting screws.

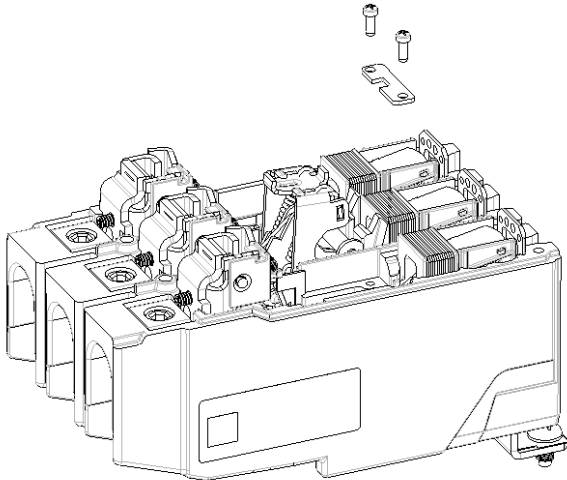


Figure 5.

### STEP 5 5a. Removal of existing barrier

Remove the barrier between right pole and mechanism center pole, as shown in Figure 6a

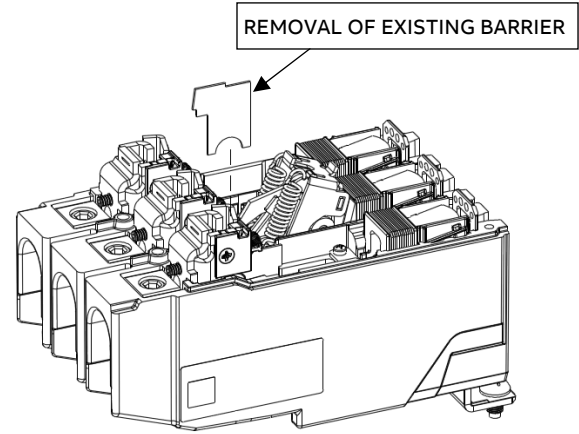


Figure 6a.

### 5b. Installation of Phase Barrier for UVR

Assemble the Phase barrier supplied with kit, as shown in Figure 6b

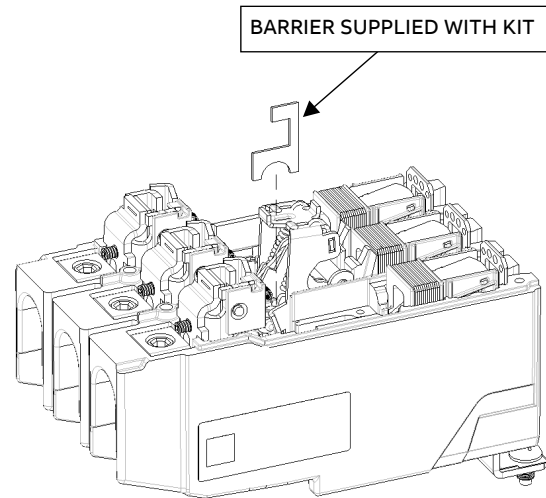


Figure 6b.

## STEP 6 INSTALLATION

Drop down the UVR in the right pole in locating holes provided in Base as shown Figure 7.  
Be absolutely sure to reinstall parts in their proper location which are accidentally removed from the breaker.

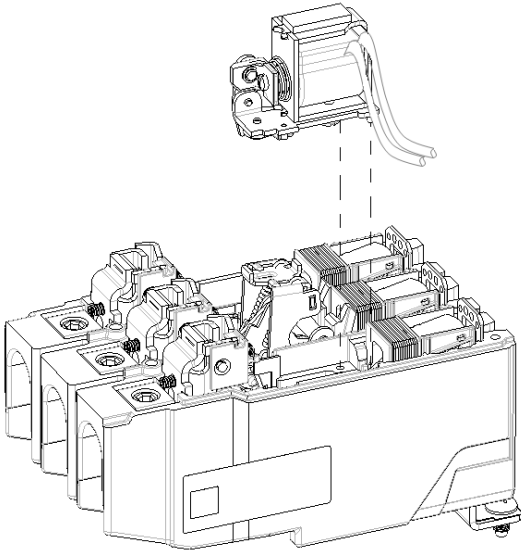


Figure 7.

While dropping down the UVR in the right pole, make sure that the UVR reset arm is properly relieved and made to rest on the handle "L" bend extension provided as shown in the figure 8.

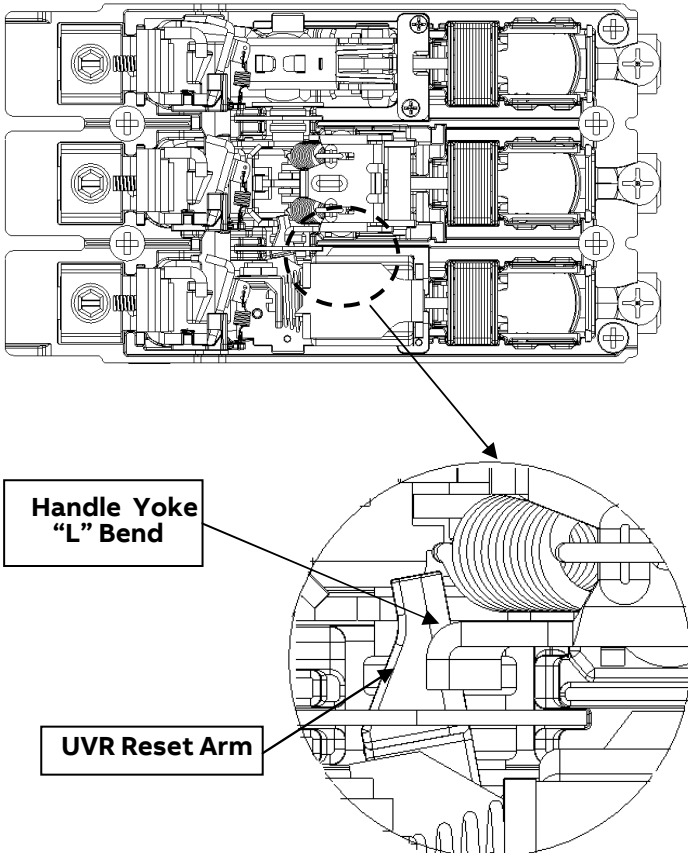


Figure 8.

## STEP 7 Reinstalling Cover

Reinstall plastic breaker handle and shutter. Position the wires to match the wire exiting hole in the cover as shown in Figure 9. Make sure no wires are pinched in the routing.

Wires must pass through the cover notch as shown in Figure 10.

Make sure the cover is properly seated and tighten the four inner cover mounting screws to torque value of 12-15 Lb-in and two outer mounting screws to 18-22 Lb-in.

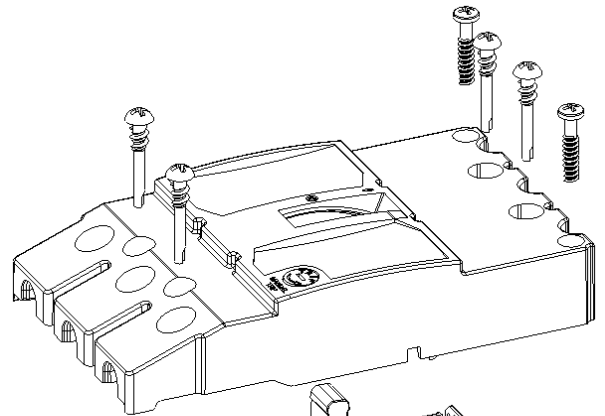


Figure 9.

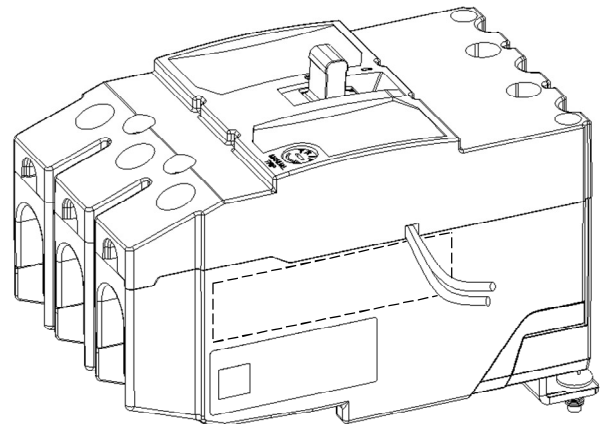


Figure 10.

## STEP 8 PERFORMANCE CHECK

1. Move breaker handle to "OFF" position to reset breaker.
2. With coil deenergized, move breaker handle towards "ON" position. Breaker should trip and handle should come to rest in the tripped position when released.
3. Apply 80% of rated voltage to coil (use dropping resistor if required). Repeat Step 1, then move handle to "ON" position. Breaker should turn "ON" and stay "ON".
4. Reduce coil voltage. Device should trip breaker between 35% and 70% of rated voltage.

## STEP 9 LOCATION OF LABELS

### Rating Label Location

1. Paste the Rating Label on the Base as shown in the Figure 11.
2. Tick the respective Voltage Rating in the check Box provided in the Rating label to be offered to Customer

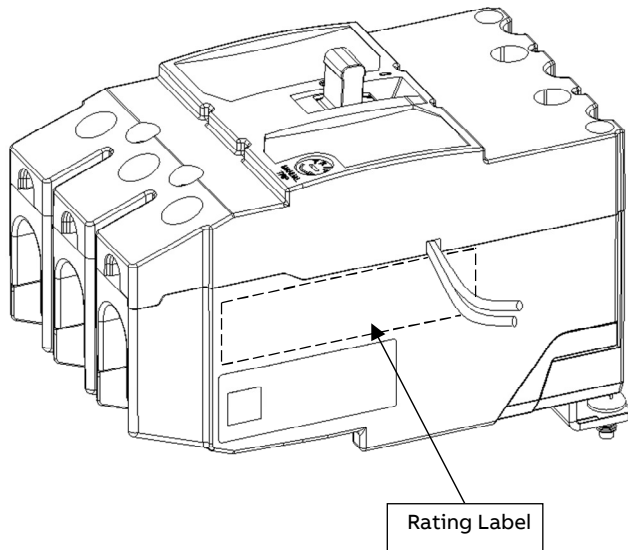
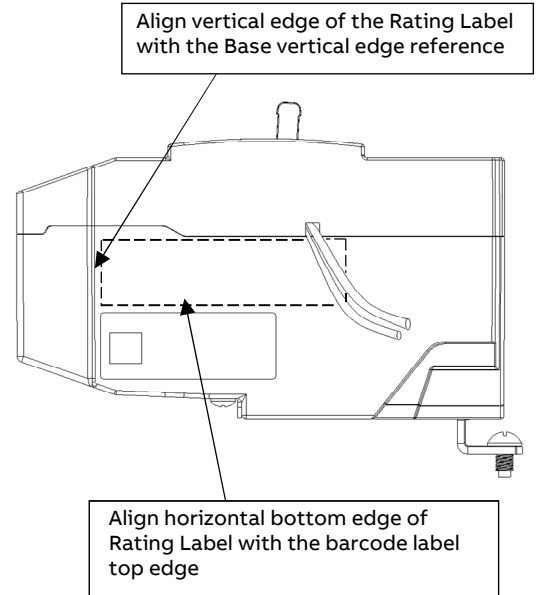


Figure 11.



### Line and Load Labels

Paste the Line and Load Labels on the top of the Cover as shown in the Figure 12.

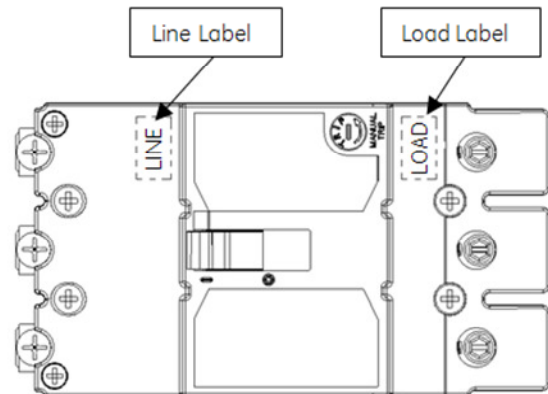


Figure 12.

These instructions do not purport to cover all details or variations in equipment nor, to provide contingency to be met in connection with installation, operation, or maintenance. Should further information be desired, or should particular problems arise which are not covered sufficiently for the purchaser's purposes, the matter should be referred to ABB Company.