

DEH41553 INSTALLATION INSTRUCTION FOR RIGHT POLE MOUNTING ONLY

Shunt Trip device



CAUTION: The device is factory installed in the right pole only. Before inspecting or beginning any maintenance works on the breaker, it must be disconnected from all voltage sources, both power and control, and breaker placed in the off (open).

NOTES: Any work requiring cover removal of a sealed breaker voids UL listing. The UL label must be destroyed.

This accessory to be installed in Right Pole only.

ELECTRICAL DATA

CAT. NO.	VOLTAGE RATING	MAX. INRUSH CURRENT
TEYXS1	24VAC	4.6A
TEYXS2	48VAC	2.4A
TEYXS3	120VAC	1.0A
TEYXS4	240/277 VAC	0.4A
TEYXS5	12VDC	7.5A
TEYXS6	24VDC	4.6A
TEYXS7	48VDC	2.4A
TEYXS8	120/125VDC	1.0A
TEYXS9	250VDC	0.4A

DESCRIPTION

The device shown in Figure 1 is used for remote opening of the circuit breaker. The integral switch operated by the breaker contact arm opens the coil circuit when the breaker is open or tripped.

The standard device is supplied as shown in Figure 1.

These devices are suitable for use with ground fault equipment.

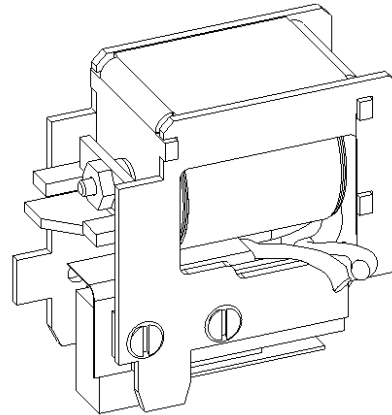


Figure 1.

STEP 1 Breaker Preparation for Field Installation.

Open breaker contacts by moving handle to the breaker "OFF" position as shown in figure 2.

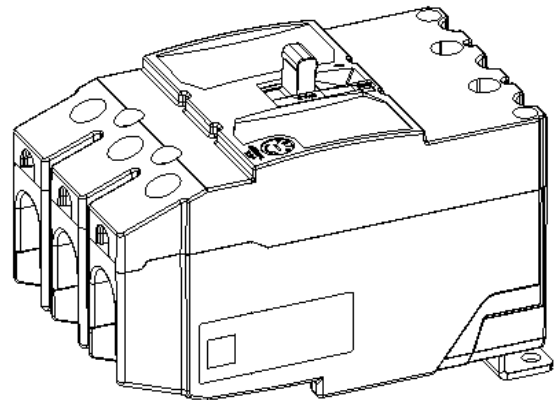


Figure 2.

STEP 2 Removing Cover

Remove breaker cover by removing cover screws as shown in Figure 3.

Tar must be removed and discarded to gain access to screw.

Remove and save plastic handle and shutter.

Push trip bar towards load end to trip mechanism.

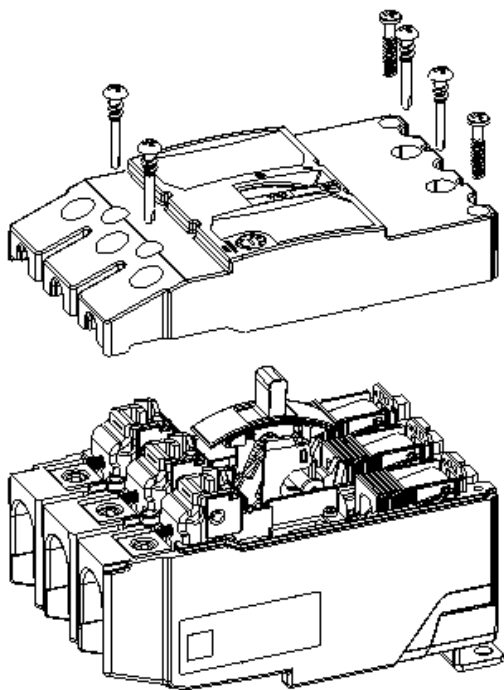


Figure 3.

STEP 3 Cover Modification for Wire Exiting

Perform cover modification as shown in Figure 4. Remove all debris.

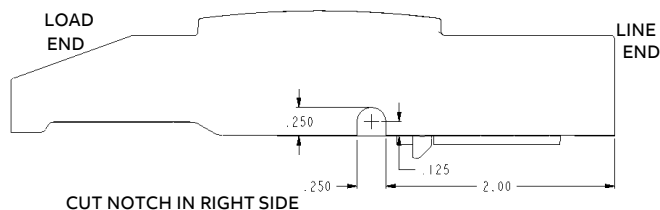


Figure 4a. Side View of Breaker Cover

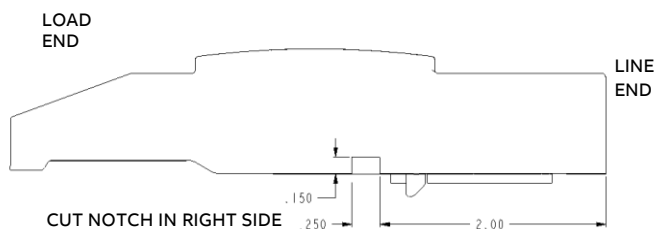


Figure 4b. Side View of Breaker Cover

STEP 4 Installation

Drop down the Shunt Trip Device in the base right pole as shown Figure 5.

Be absolutely sure to reinstall parts in their proper location which are accidentally removed from the breaker.

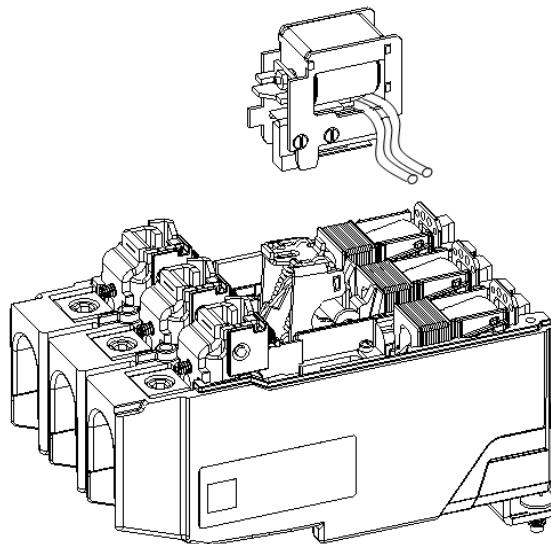


Figure 5.

STEP 5 Reinstalling Cover

Reinstall plastic breaker handle and shutter. Position the wires to match the wire exiting hole in the cover as shown in Figure 6.

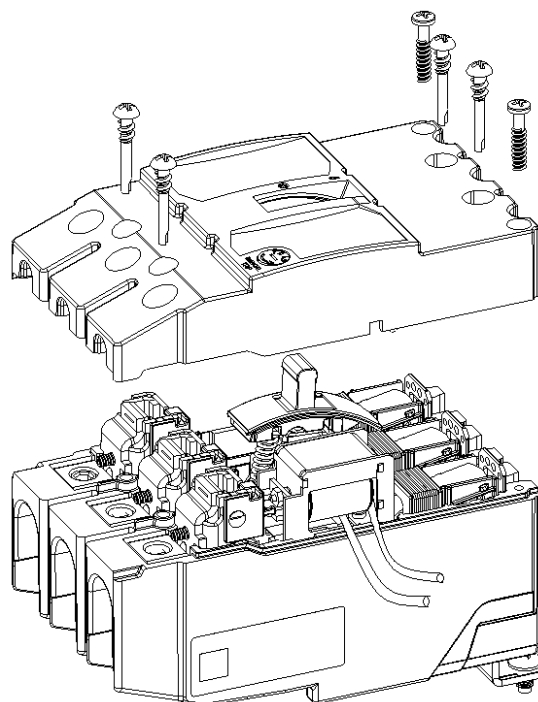


Figure 6.

Make sure no wires are pinched in the routing. Wires must pass through the cover notch as shown in Figure 7.

Make sure the cover is properly seated and tighten the four inner cover mounting screws to torque value of 12-15 Lb-in and two outer mounting screws to 18-22 Lb-in.

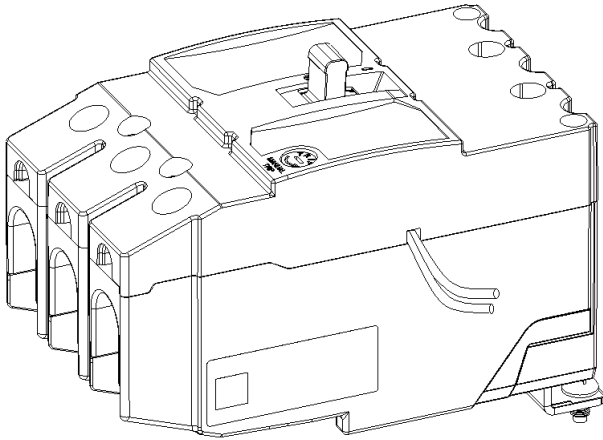


Figure 7.

STEP 6 PERFORMANCE CHECK

1. Close breaker contacts.
2. Apply 70% of rated voltage for the device. Breaker must trip.
3. Check continuity of shunt trip. In "TRIPPED" or "OFF" position shunt trip coil should show open.

STEP 7 LOCATION OF LABELS

Rating Label Location

1. Paste the Rating Label on the Base as shown in the Figure 8.
2. Tick the respective Voltage Rating in the check Box provided in the rating label to be offered to Customer

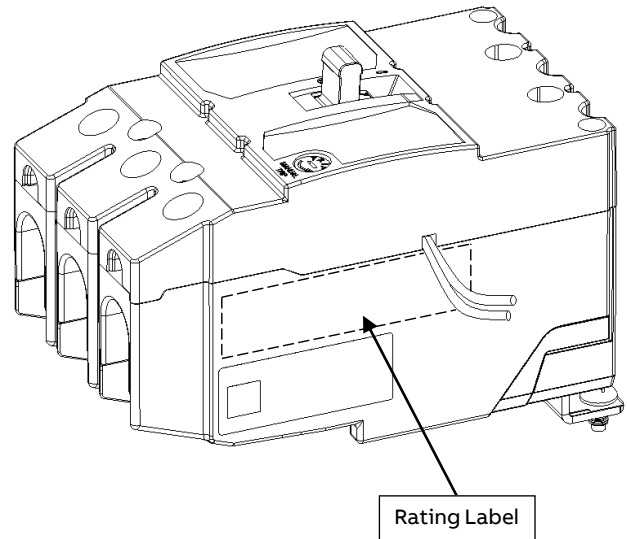
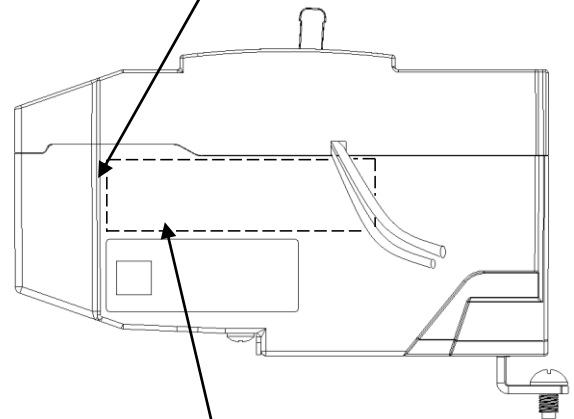


Figure 8.

Align vertical edge of the Rating Label with the Base vertical edge reference



Align horizontal bottom edge of Rating Label with the barcode label top edge

Figure 9.

These instructions do not purport to cover all details or variations in equipment nor, to provide contingency to be met in connection with installation, operation, or maintenance. Should further information be desired, or should particular problems arise which are not covered sufficiently for the purchaser's purposes, the matter should be referred to ABB Company.