

INSTRUCTION SHEET

800/1200A Gasket Replacement

Used with:

800/1200A NEMA 3R Safety Switches

Caution:

To avoid accidental contact with live circuits, make certain switch is de-energized and handle is in OFF position.

Existing Gasket Removal:

1. Using a putty knife (Fig. 1), cut the existing gasket at any RTV seam (Fig. 2 + Fig. 3) to separate one piece from the second piece.
2. Grab the gasket and pull up and away from the RTV seam to remove the gasket, scraping with the putty knife underneath where you are pulling to aid in removal.
3. (Optional) Apply Goo Gone (Fig. 4) or similar cleaner on remaining gasket residue and let sit for 2 minutes. Then scrape the softened gasket residue with putty knife.
4. Apply rubbing alcohol (Fig. 5) and wipe the final remaining amount of gasket residue off with paper towel.
5. Ensure application area is dry and has no remaining residue.

New Gasket Application:

6. Peel backing off of the HT-870 or certified production alternative gasket and apply in the exact same location as the previous gasket, cutting to the proper length for each side with square ends.
7. At each gasket joint, apply the RTV-100 (Fig. 6) being sure that it fully fills the gap between the two gasket pieces like in Fig. 3. Wipe off any excess RTC overflow immediately.
8. Keep the door open and allow the RTV to cure for 24hrs.

*Step 3 is optional depending on amount of gasket residue remaining



Fig. 1

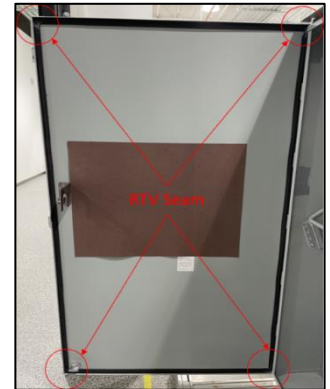


Fig. 2

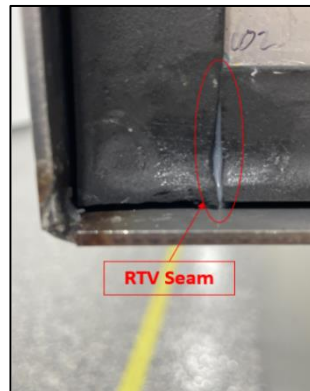


Fig. 3



Fig. 4



Fig. 5



Fig. 6