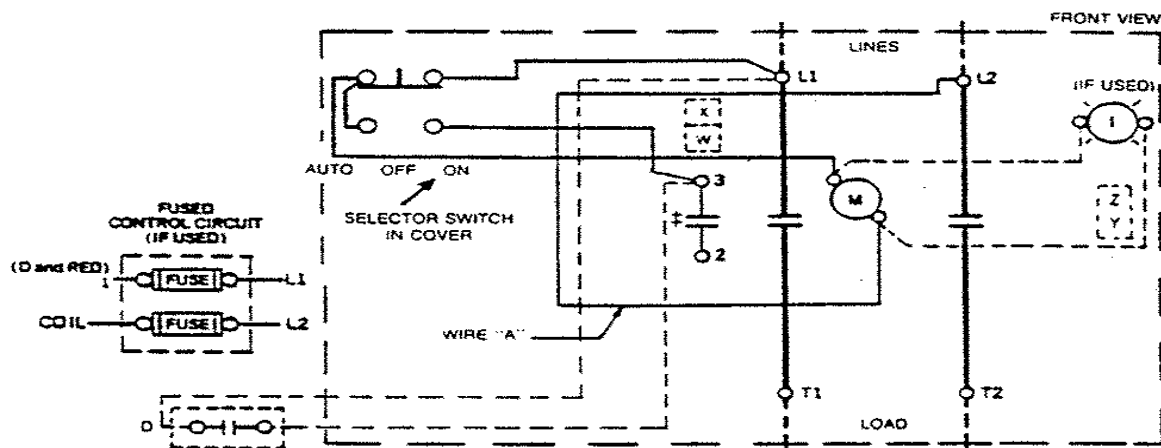


CR360L Lighting Contactor

60, 100, 200, 300 Ampere-Single-Phase With Selector Switch



The following accessory kits may be installed on this device.

	60 Ampere CR305X200A, B, C, X100D, E CR305X241A, B	100 Ampere CR305X300A, B, C, X100D, E CR305X341A, B	200 Ampere CR305X500A, B, C, X100E, E CR341X541A, B	300 Ampere CR305X500A, B, C, X100D, E CR305X541A, B
Aux Contact				
Control Circuit Fuse				
Principal Renewal Parts				
3 Movable & 6 Sta. Cont.	546A780G051	55-153677G002	55-154607G051	55-154607G002
Coil (Plus Suffix No. below)	15D22G	55-501336G	55-530249G	55-530249G

For CSA-GND KIT

1/2-IN CONDUIT	55-213403G001	1 1/2-IN CONDUIT	55-213403G005
3/4-IN CONDUIT	55-213403G002	2-IN CONDUIT	55-213403G006
1-IN CONDUIT	55-213403G003	2 1/2-IN CONDUIT	55-213403G007
1 1/4-IN CONDUIT	55-213403G004	3-IN CONDUIT	55-213403G008

M-LINE CONTACTOR

I-INDICATING LIGHT

D-MAINTAINING CONTACT PILOT DEVICE

Use 75°C, copper conductors only, for field wiring. Torque line and load terminals as shown at right.

Rating	Lb-In
60A	50
100A	150
200A	250
300A	300

FOR SEPARATE CONTROL-Remove wire "A". Disconnect wire from selector switch at L1. Connect separate control source to coil and wire from selector switch. Connect external maintaining contact pilot device to #3 on contactor and wire from selector switch.

NOTE: Refer to the National Electrical Code. Additional control circuit overcurrent protection may be required.

Wire "A" has been omitted at factory on all forms having a coil voltage of 120 volts or less.

COIL (Order Coil No. plus coil suffix number per table below)

60 Hz	115-120V	200-208V	230-240V	460-480V	575-600V
50 Hz	110V	220V	380V	440V	550V
Coil Suffix	002	023	003	004	005

EXTRA AUXILIARY CONTACTS				
Final Suffix Letter Of CR Number	Contact Location, See Diagram			
	W	X	†Y	†Z
A (Or None)				
B	— —			
C	— —			
D			— —	— —
E	— —	— —		
F	— —	— —		
G	— —		— —	— —
H	— —		— —	— —
J	— —	— —		— —
†Z	No Holding Interlock			

† Not available when Control Circuit Fuse Kit is used.

These instructions do not cover all details or variations in equipment nor do they provide for every possible contingency that may be met in connection with installation, operation, or maintenance. Should further information be desired or should particular problems arise that are not covered sufficiently for the purchaser's purposes, the matter should be referred to your local ABB Sales Office.