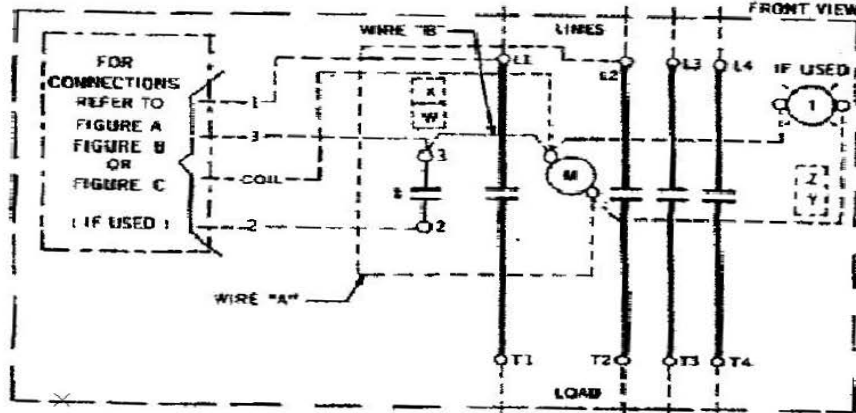
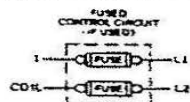
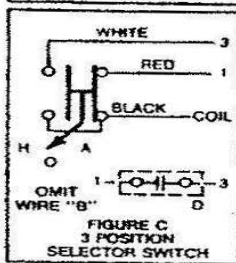
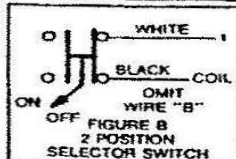
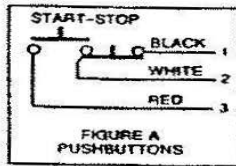


GEJ-6585 Information Label

CR360L Lighting Contactor

60, 100, 200, 300 Ampere



The following accessory kits may be installed on this device.

	60 Ampere	100 Ampere	200 Ampere	300 Ampere
START-STOP PB	CR305X220N	CR305X320B	CR305X520B	CR305X520B
ON-OFF PB	CR305X220E	CR305X320D	CR305X520C	CR305X520C
OFF-ON Sel Sw	CR305X230D	CR305X330D	CR305X530D	CR305X530D
H-O-A Sel Sw	CR305X230N	CR305X330B	CR305X530B	CR305X530B
Ind Light	CR305X250N	CR305X350B	CR305X550B	CR305X550B
Aux Contact	CR305X200A, B, C, X100D, E	CR305X300A, B, C, X100D, E	CR305X500A, B, C, X100D, E	CR305X500A, B, C, X100D, E
Control Circuit Fuse	CR305X241A, B	CR305X341A, B	CR341X541A, B	CR305X541A, B
Principal Renewal Parts				
3 Movable & 6 Sta. Cont.	546A780G051	55-153677G002	55-154607G051	55-154607G002
Coil (Plus Suffix No.)	15D23G	55-153608G	55-501493G	55-501493G
For CSA-GND KIT				
1/2-IN CONDUIT	55-213403G001	1 1/2-IN CONDUIT	55-213403G005	
3/4-IN CONDUIT	55-213403G002	2-IN CONDUIT	55-213403G006	
1-IN CONDUIT	55-213403G003	2 1/2-IN CONDUIT	55-213403G007	
1 1/4-IN CONDUIT	55-213403G004	3-IN CONDUIT	55-213403G008	

M-LINE CONTACTOR

I-INDICATING LIGHT

D-MAINTAINING CONTACT PILOT DEVICE

Use 75°C. copper conductors only, for field wiring. Torque line and load terminals as shown at right.

Rating	Lb-In
60A	50
100A	150
200A	250
300A	300

FOR SEPARATE CONTROL-Omit wire "A" and connect control source to coil and to 1 on control device.

NOTE: Refer to the National Electrical Code. Additional control overcurrent protection may be required when the control circuit conductors extend beyond the enclosure.

3-PHASE RATINGS APPLY TO 2-PHASE FORMS.

COIL (Order Coil No. plus coil suffix number per table below)

60 Hz	115-120V	200-208V	230-240V	—	460-480V	575-600V
50 Hz	110V	—	220V	380V	440V	550V
Coil Suffix	002	023	003	054	004	005

EXTRA AUXILIARY CONTACTS

Final Suffix Letter Of CR Number	Contact Location, See Diagram			
	W	X	†Y	†Z
A (Or None)				
B	—			
C	—			
D			—	—
E	—	—		
F	—	—		
G	—		—	—
H	—		—	—
J	—	—		—

† Not available when Control Circuit Fuse Kit is used.

These instructions do not cover all details or variations in equipment nor do they provide for every possible contingency that may be met in connection with installation, operation, or maintenance. Should further information be desired or should particular problems arise that are not covered sufficiently for the purchaser's purposes, the matter should be referred to your local ABB Sales Office.