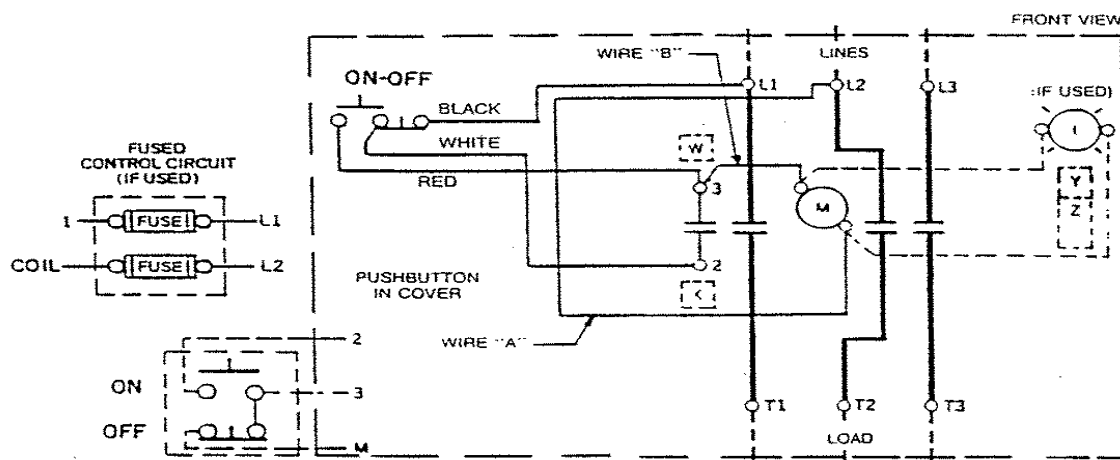


## GEJ-6577 Information Label

# CR360L Lighting Contactor

30 Ampere-With Pushbutton



M—LINE CONTACTOR

I—INDICATING LIGHT

Use 75°C, copper conductors only, for field wiring. Torque line and load terminals to 20 lb-in.

FOR SEPARATE CONTROL—Remove wire "A". Disconnect black wire from L1 and connect control source to coil and black wire from pushbutton.

NOTE: Refer to the National Electrical Code. Additional control circuit overcurrent protection may be required.

FOR 1-PHASE OPERATION—Change connection of wire "A" from L2 to L3. Connect lines to L1 and L3 and load to T1 and T3.

TO ADD REMOTE CONTROL PUSHBUTTON STATION—Remove wire "B" and connect as shown.

Wire "A" has been omitted at factory on all forms having a coil voltage of 120 volts or less.

COIL (Order 15021G plus coil suffix number per table below)

60 Hz	115–120V	200–208V	230–240V	—	460–480V	575–600V
50 Hz	110V	—	220V	380V	440V	550V
Coil Suffix	002	023	003	064	004	005

The following accessory kits may be installed on this device.

START-STOP PB	CR305X120N
IND LIGHT	CR305X150N
AUX CONTACT	CR305X100A, B, C, D, E
CONTROL CIRCUIT FUSE	CR305X141A, B, C, D
For CSA—GND KIT	
½-IN CONDUIT	55-213403G001
¾-IN CONDUIT	55-213403G002

EXTRA AUXILIARY CONTACTS				
Final Suffix Letter Of CR Number	Contact Location, See Diagram			
	W	X	†Y	†Z
A (Or None)				
B	— —			
C		— —		
D	— —	— —		
E	— —			— —
F	— —	— —		
G	— —	— —		— —
H	— —	— —		— —
J	— —		— —	— —

† Not available when Control Circuit Fuse Kit is used.

### PRINCIPAL RENEWAL PARTS

4 Movable & 8 Sta Cont.....546A301G002

These instructions do not cover all details or variations in equipment nor do they provide for every possible contingency that may be met in connection with installation, operation, or maintenance. Should further information be desired or should particular problems arise that are not covered sufficiently for the purchaser's purposes, the matter should be referred to your local ABB Sales Office.