

---

# Inside knowledge that puts you ahead

With the intelligent ITS2 Unit



- Integrated and future ready
- Convenience and ease
- Safe and reliable



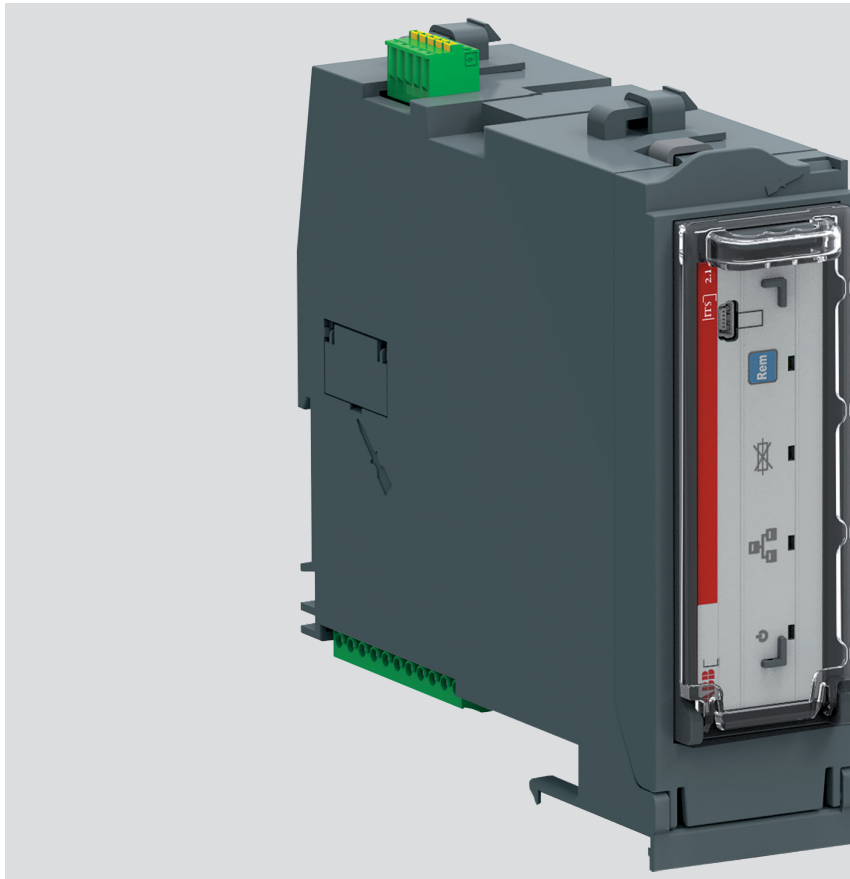
---

**When it comes to intelligence, it's what's inside that counts. And whether it's within the SlimLine XRG or InLinell or installed in your existing setup, the ITS2 intelligent monitoring unit guarantees what's inside is something special.**

**Ekip Connect's easily configurable interface enables smooth digital functionality. And cloud-based connectivity via ABB Ability™ Energy and Asset Manager makes it easy to monitor key electrical parameters in real-time, allowing users to optimize their networks simply and safely.**

**In other words, ITS2's inside knowledge enables data-driven decisions, putting you ahead.**

# Greater intelligence comes from within



Real-time measuring and monitoring have never been easier, thanks to the ITS2. Its built-in intelligence means that whether it's supporting a data center, hospital or commercial building, operatives can access its monitoring data and

provide an instant response in the event of any system faults.

**The result of this fully digital solution? Smarter, data-driven decisions made in real time.**



## Integrated and future-ready

- Cloud-based connectivity with ABB Ability™ Energy and Asset Manager
- Easy configuration with Ekip Connect
- Configure ITS2 monitoring in just 1 min



## Convenience and ease

- One unit to digitalize switches and fusegear also compatible with OT switch-disconnectors and OS Switch fuses
- Space-saving factory-mounted design\*
- 80 percent faster installation\*



## Safe and reliable

- Ensures continuous operations
- Fuse monitoring functionality (EFM)
- System safety and protection protocols
- Increases the level of protection in the electrical system (Preventive Overload Protection)

\*When integrated with the SlimLine XGR or InLineII

# Integrated and future-ready



## Ease of installation

A busy facility needs any new monitoring equipment to get up and running quickly to avoid operational interruptions.

Installing the ITS2 monitoring is a pain-free, intuitive process, with Ekip Connect used to configure your entire system.

The ITS2 communicates with the main gateway using Modbus RTU or TCP protocol. The gateway enables direct communication to the ABB Ability™ Energy and Asset Manager using the Ekip Com Hub cartridge module.

The gateway uploads your system data to the cloud-connected ABB Ability™ Energy and Asset Manager platform, **enabling full control in less than 10 minutes.**

## Seamless integration

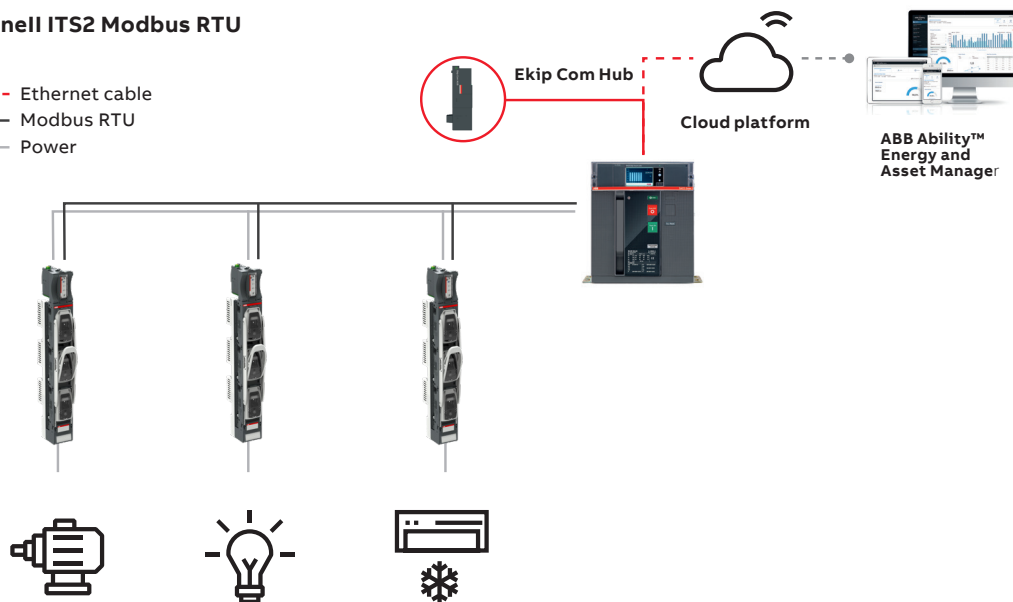
A complete digital solution needs to be compatible with your existing infrastructure and processes. The ITS2 monitoring unit integrates flawlessly both with ABB's switches and fusegear products

- Uses ABB Ability™ Energy and Asset Manager to collect information from enabled ABB devices installed in low voltage distribution systems
- Monitor the electrical system from anywhere, anytime
- ABB Ability™ Energy and Asset Manager compatible gateways:  
Emax 2 and Tmax circuit breakers, EkipUP and TruONE Automatic Transfer Switches (equipped with Ekip Com Hub) or with Ekip E-Hub via Modbus RS-485.

## Connection to ABB Ability™ Energy and Asset Manager for all switches and fusegear with ITS2

### InLineII ITS2 Modbus RTU

- Ethernet cable
- Modbus RTU
- Power



Configure ITS2 monitoring unit in  
1 minute with Ekip Connect



# Convenience and ease



Making the best use of your resources means optimizing valuable floor space while reducing costly energy consumption.

As a compact, solution, the ITS2 monitoring unit makes it easy to conserve energy from the start of use.

- **Save up to 10% space** – when ITS2 unit is integrated with InLine II or SlimLine XRG
- **Easy, pre-engineered installation**
  - be up and running in minutes
- **Just one ABB unit** – compatible with existing switches and fusegear products



—  
Installation of ITS2.1 monitoring  
unit with InLineII

# Safe and reliable



Plant-wide safety is non-negotiable. You need to be certain that all equipment has the most rigorous in-built safety measures to protect both immediate users and the customers whose lives depend on consistent uptime.

ITS2 monitoring comes with a total safety concept to protect operatives, maintenance workers and the people who depend on them.

\*Only for SlimLine XRG, OS Switch fuses, InLineII

## Ensuring continuous operations

- Real-time monitoring for: voltage, current, temperature, frequency, active and reactive power, power factor, switch position and energy consumption through ABB Ability™ Energy and Asset Manager.
- **Fuse monitoring functionality (EFM)** to monitor operational status and, in the event of a blown fuse, to raise an alert\*
- **Preventive overload protection.** Configurable time and current thresholds allow to increase the level of protection in the system. This can be done in less than 1 minute using Ekip Connect.



— Learn about Preventive Overload Protection



— Add extra protection with Ekip Connect in less than 1 minute



# Introduction

## General product overview



Type	Ie [A]	Description	Order code	Weight [kg]
ZHBM00-3P-M8-ITS2.1	160	3x M8 bolt + ITS2.1 unit	1SEP622695R0001	2.82
ZHBM00-3P-V-ITS2.1	160	3x V-clamp + ITS2.1 unit	1SEP622696R0001	2.82
ZHBM1-3P-M12-ITS2.1	250	3x M12 bolt + ITS2.1 unit	1SEP622697R0001	4.9
ZHBM1-3P-V-ITS2.1	250	3x V-clamp + ITS2.1 unit	1SEP622698R0001	4.9
ZHBM2-3P-M12-ITS2.1	400	3x M12 bolt + ITS2.1 unit	1SEP622699R0001	5.46
ZHBM2-3P-V-ITS2.1	400	3x V-clamp + ITS2.1 unit	1SEP622700R0001	5.46
ZHBM3-3P-M12-ITS2.1	630	3x M12 bolt + ITS2.1 unit	1SEP622701R0001	6.03
ZHBM3-3P-V-ITS2.1	630	3x V-clamp + ITS2.1 unit	1SEP622702R0001	6.03



ITS2.1 Standalone Module

Suitable for OS switch fuses and OT switch disconnectors	
Order code	Type
1SEP622724R0001	ITS2.1 Standalone Module



Ekip Com Modbus TCP-OX

Suitable communication modules (Modbus RTU comes as standard)	
Type	Order code
Ekip Com Modbus TCP-OX	1SDA104052R1

# Technical parameters

Applies to SlimLine XRG, InLine II and ITS2 standalone.

<b>Technical data</b>		
<b>Input Voltage limits</b>		
Power supply		24Vdc ± 20%
Power consumption		2W
<b>SlimLine XR Gold ITS2.1: which data can be monitored</b>		
<b>Features</b>		
Line Voltage	(V AC)	V12, V23, V31
Phase Voltage	(V AC)	V1N, V2N, V3N
Current	(A)	L1, L2, L3
Active power	(kw)	L1, L2, L3
Reactive power	(kVA)	L1, L2, L3
Cos phi	(Cos φ)	L1, L2, L3
Power factor	(PF)	Sum
Energy	(kWh)	Sum
Fuse status	(EFM)	L1, L2, L3
Temperature	(oC)	Terminal L1, L2
Switch position		On/Off
Motor Control		by bus
Protocol		Modbus RTU, Modbus TCP
<b>Supported By</b>		
Ekip Connectt 3		
ABB Ability™ Energy and Asset Manager		



ABB Ability™ Energy and  
Asset Manager

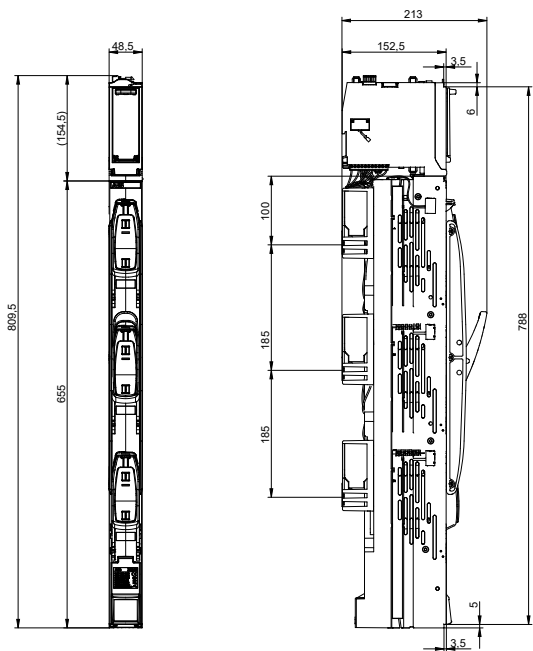


Ekip Connectt 3

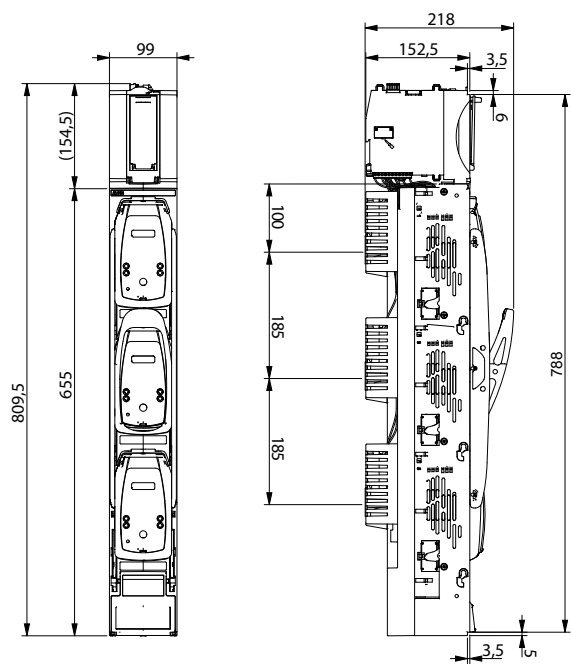


# Dimensional drawings

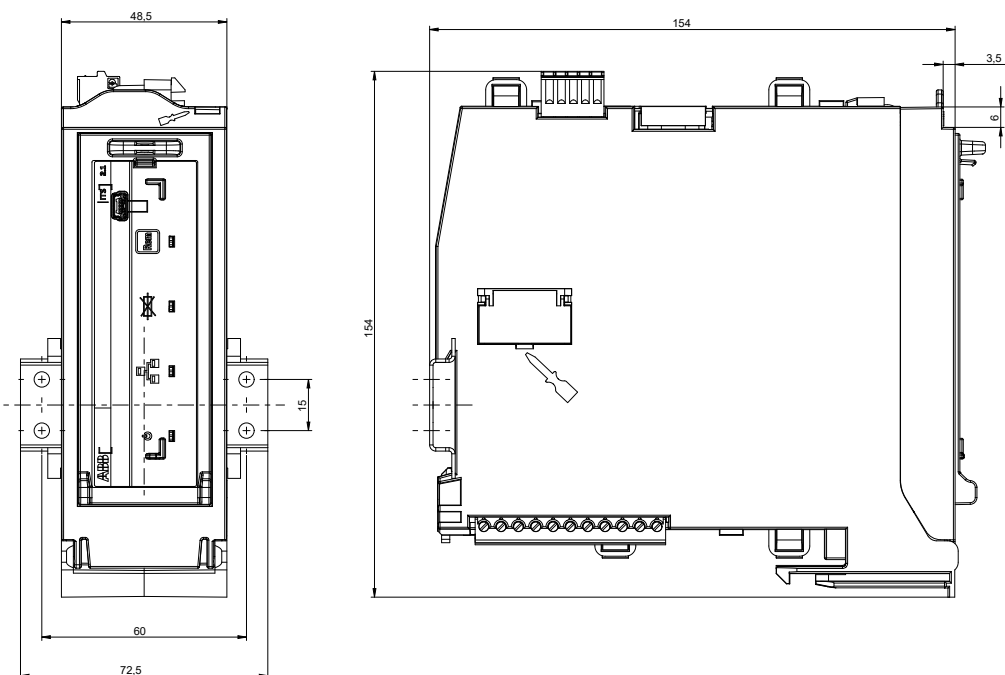
ZHBM00



ZHBM123



ITS2 Standalone





---

**ABB Oy**  
**Smart Power**

P.O. Box 622  
FI-65101 Vaasa  
Finland

**[www.abb.com](http://www.abb.com)**

Find the address of your local sales  
organization on the ABB homepage:

**[www.abb.com/contacts](http://www.abb.com/contacts)**  
**> Low Voltage Products and Systems**