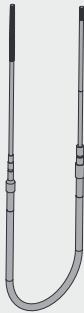
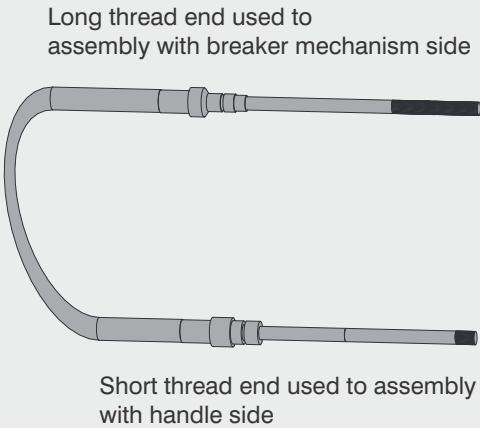


# SACE Tmax XT

Flange Handle Cable XT1 - XT2 - XT3 - XT4 - XT5 - XT6  
Maniglia a Cavo XT1 - XT2 - XT3 - XT4 - XT5 - XT6  
Flanschgriff Kabel XT1 - XT2 - XT3 - XT4 - XT5 - XT6  
Bride poignée Câble XT1 - XT2 - XT3 - XT4 - XT5 - XT6  
Mango de brida Cable XT1 - XT2 - XT3 - XT4 - XT5 - XT6  
法兰手柄电缆 XT1 - XT2 - XT3 - XT4 - XT5 - XT6

The Cables are used to interconnect the Circuit Breaker Mechanism to its Handle Operator, mounted on the panel door.  
The Cable offer, to be used on XT1 to XT6 frame size, includes different length size as per Catalog Codes given below.

Global Codes	US Codes	Description
1SDA115556R1	SC3L	FH XT1...XT6 Cable - 3 FT
1SDA115557R1	SC4L	FH XT1...XT6 Cable - 4 FT
1SDA115558R1	SC5L	FH XT1...XT6 Cable - 5 FT
1SDA115559R1	SC6L	FH XT1...XT6 Cable - 6 FT
1SDA115560R1	SC8L	FH XT1...XT6 Cable - 8 FT
1SDA115561R1	SC10L	FH XT1...XT6 Cable - 10 FT



7/16



7/16-20

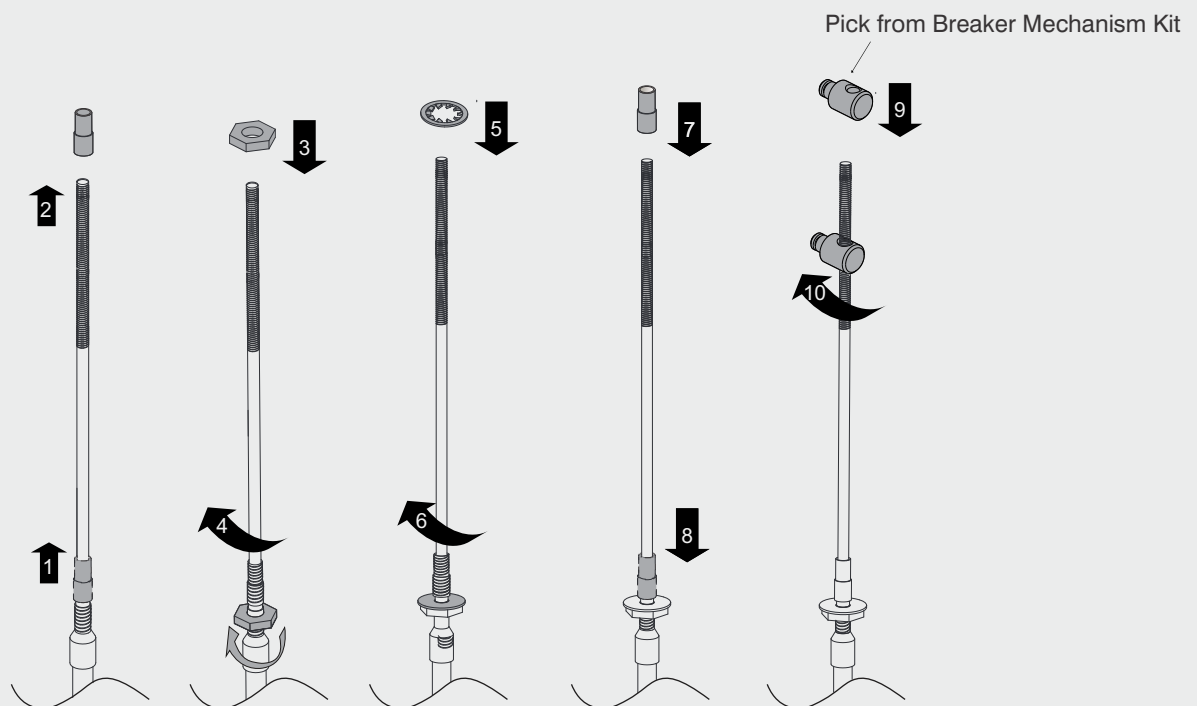
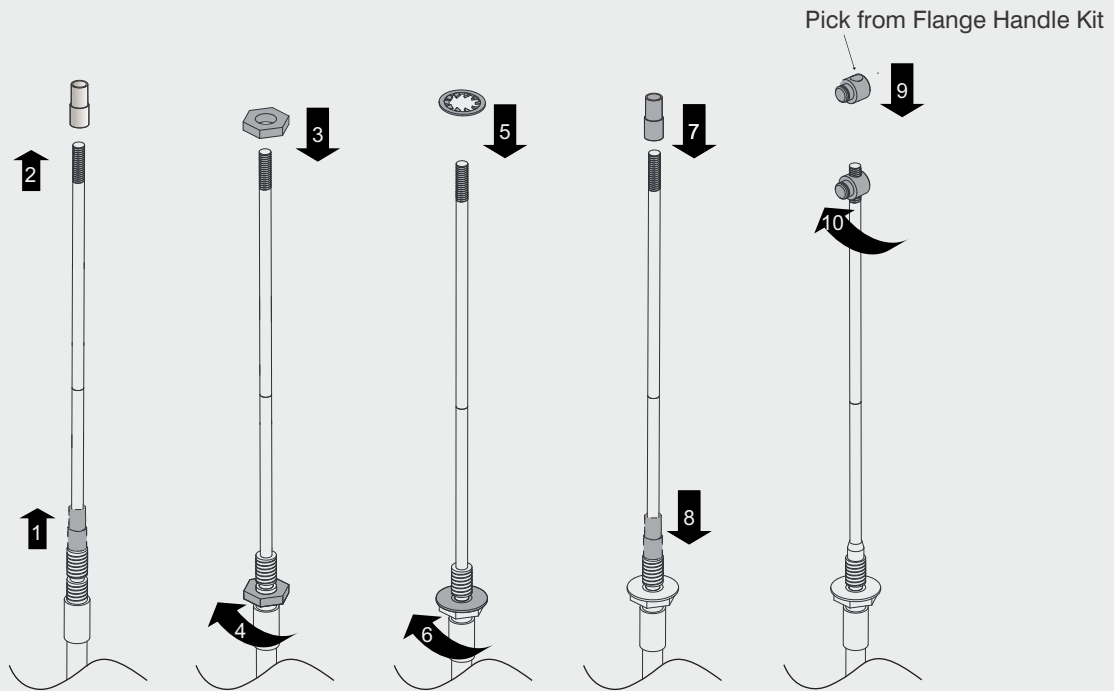


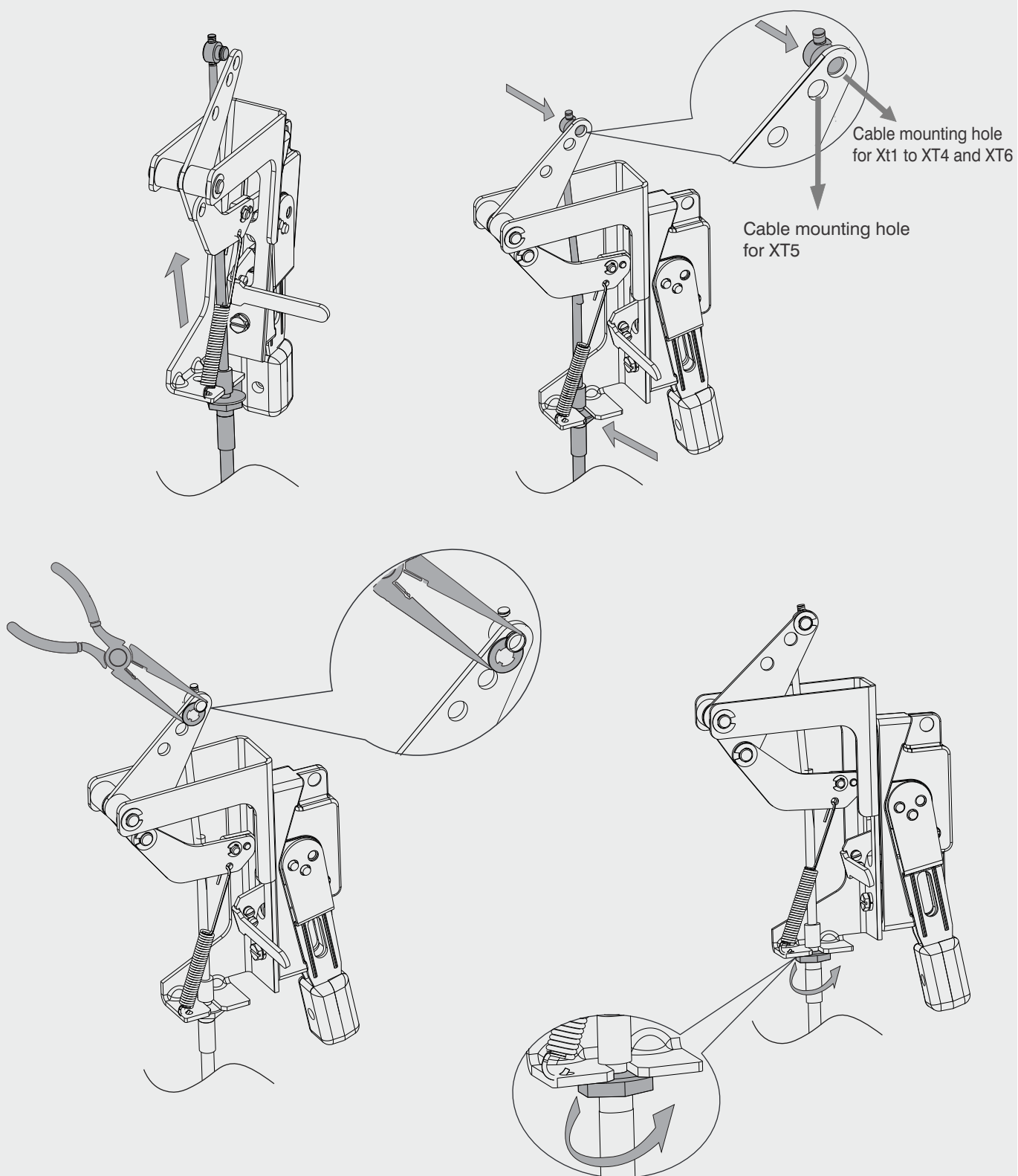
XT1...XT6

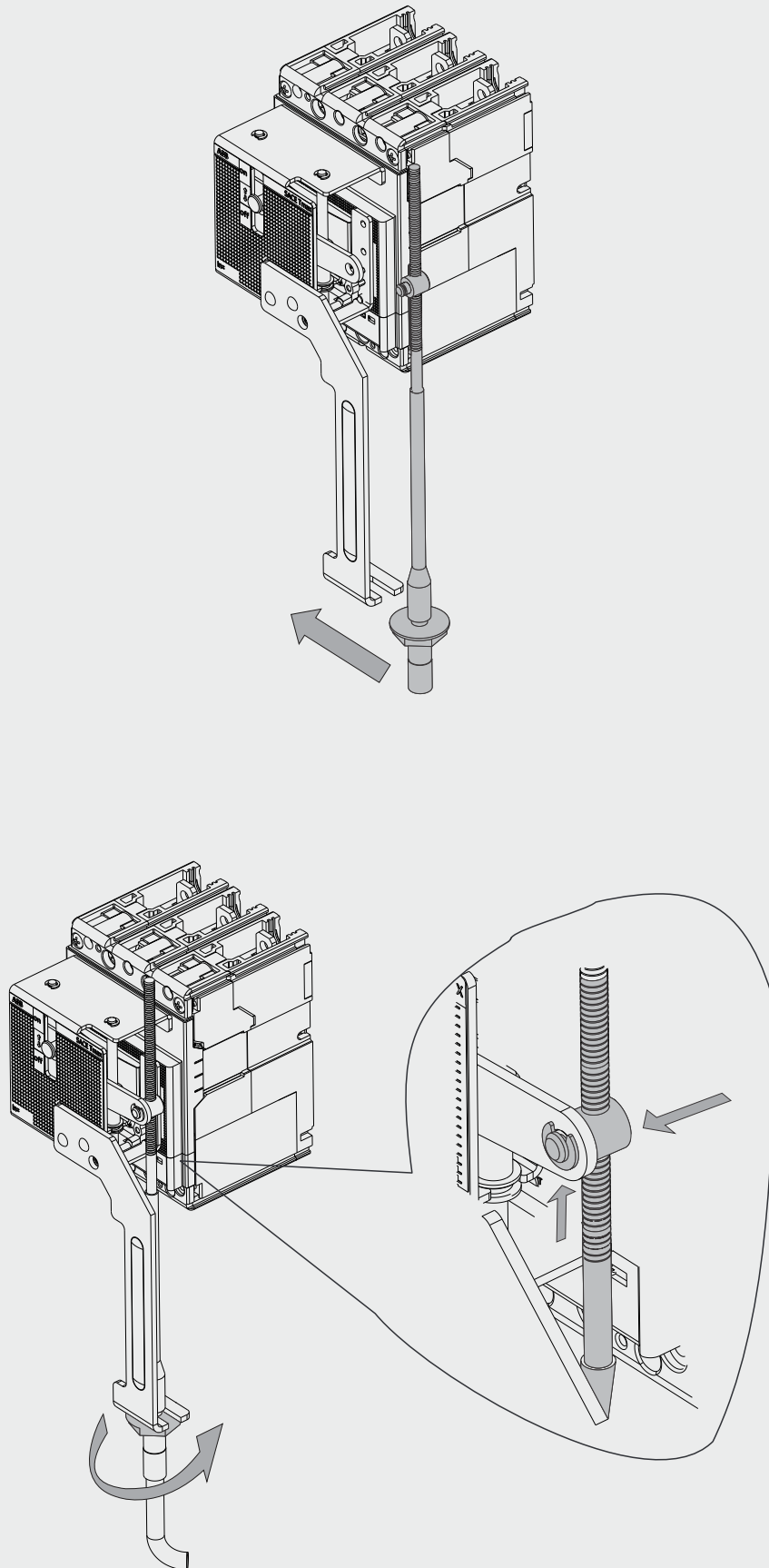
1

2

2

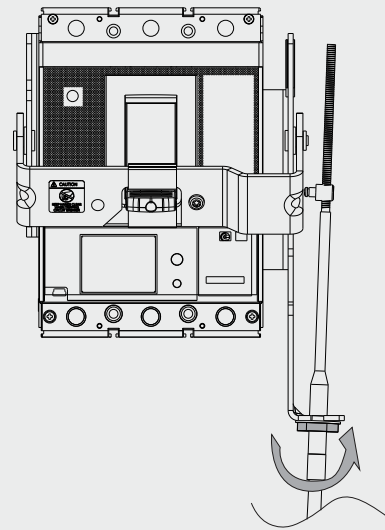
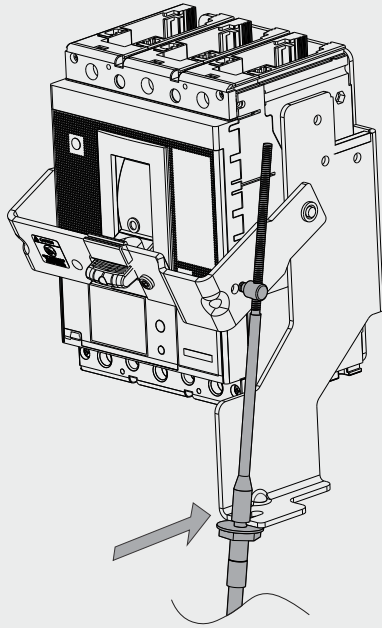




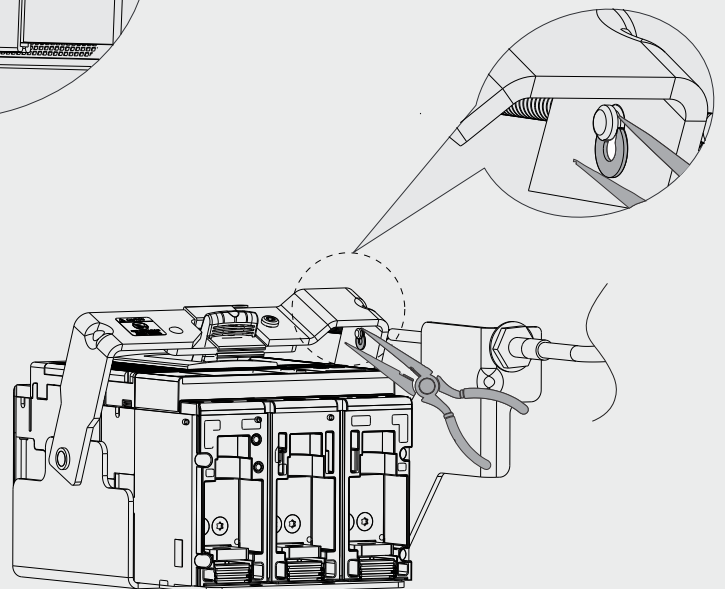
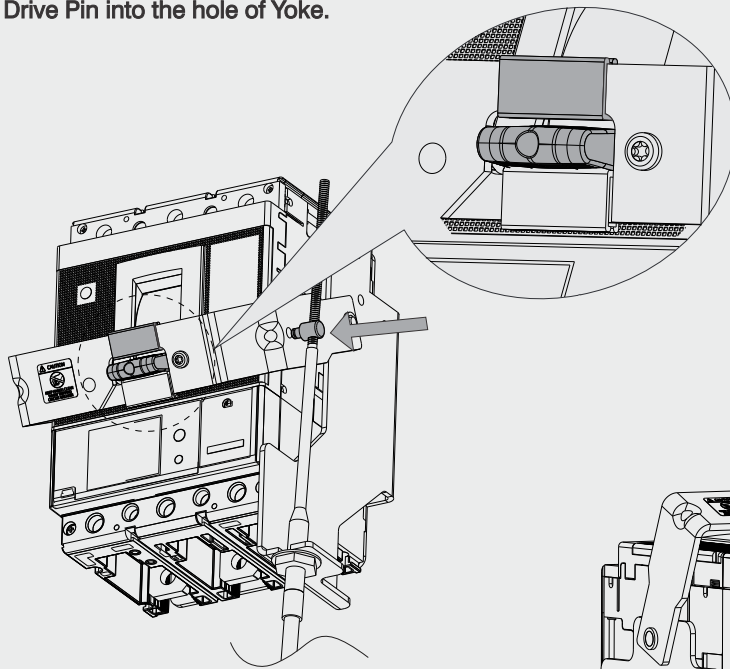


Note: For calibration refer instruction sheet 1SDH000719R0651

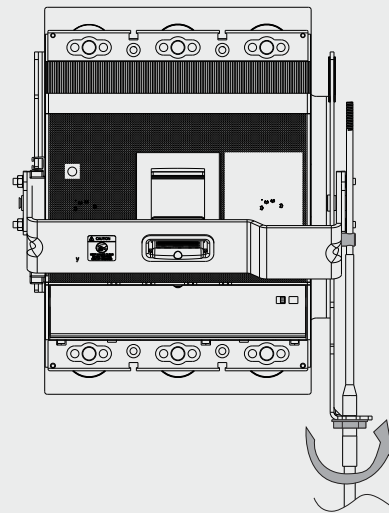
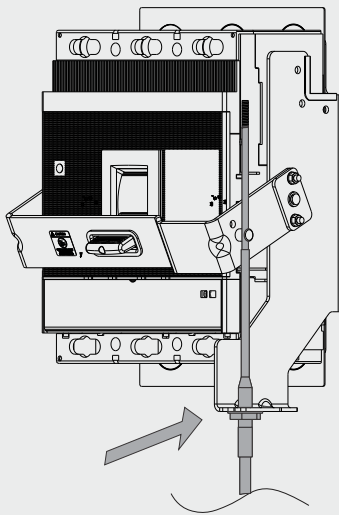




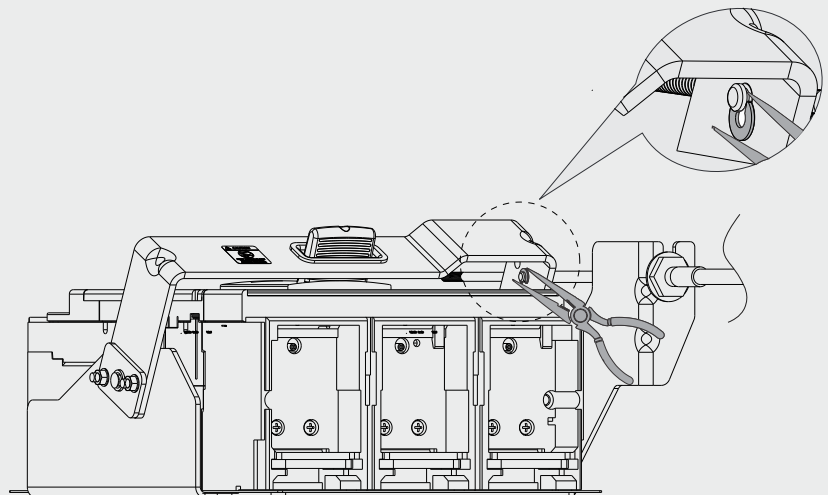
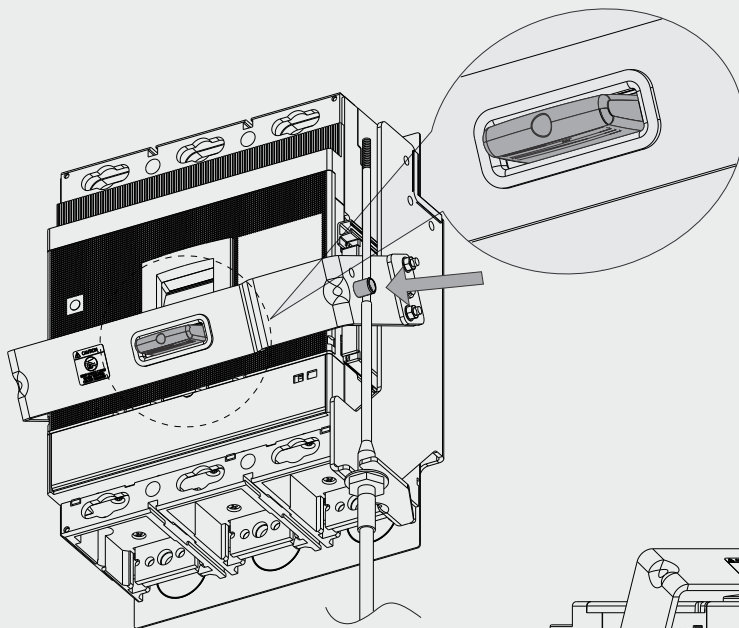
Ensure gap between Edge Guard and Breaker Handle as shown before inserting the Drive Pin into the hole of Yoke.



Note: For calibration refer instruction sheet 1SDH002011A1626



Ensure gap between Edge Guard and Breaker Handle as shown before inserting the Drive Pin into the hole of Yoke.



Note: For calibration refer instruction sheet 1SDH002012A1621