
Plastic enclosed switch-disconnectors OTU from 16 to 125 Amperes

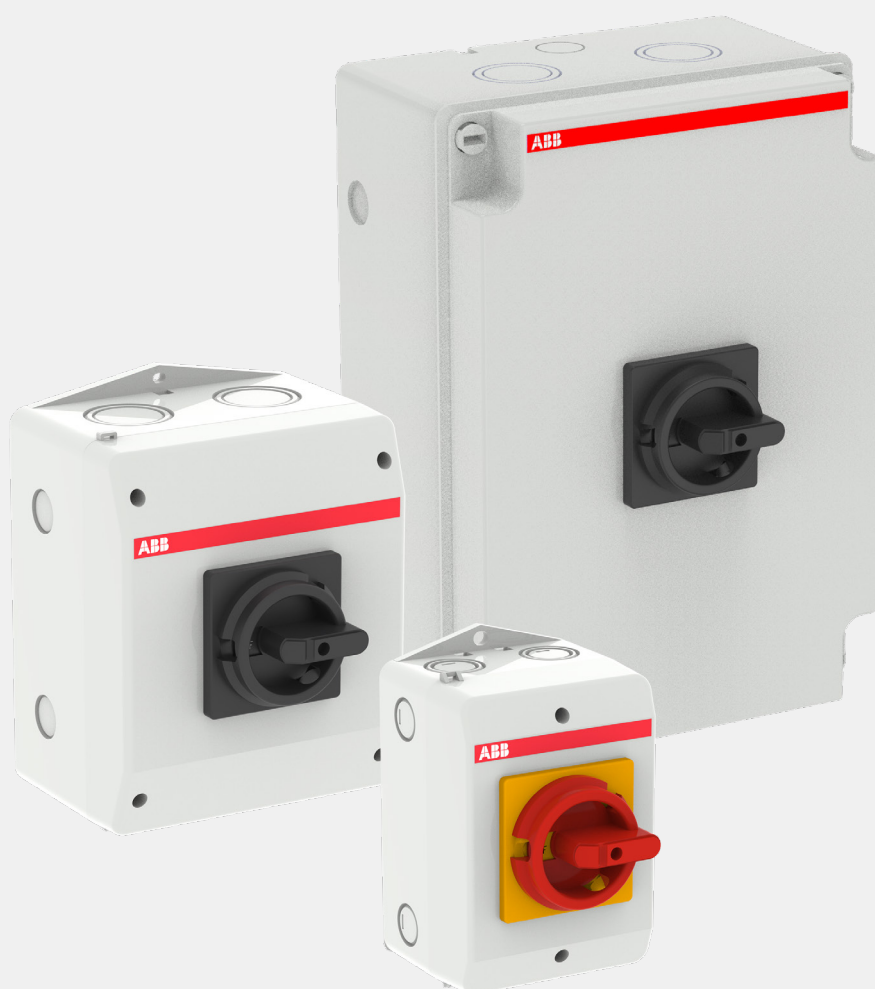




Table of content

01. Overview	05
02. Ordering information	06
03. Dimension drawings	08



OTU from 16 to 125 Amperes

Enclosed switch-disconnectors OTU 16 to 125 Amperes are used as main switches in applications where loads need to be isolated from the network.



Reliable in extreme conditions

The plastic enclosures have a protection degree IP65. They are made of glass reinforced polycarbonate plastic material (PC f1). OTU enclosed switches have been designed for applications that require high rigidity, heat resistance and good impact performance. The plastic enclosures are suitable for indoor and outdoor use with excellent UV resistance in accordance with UL746C.



Safety and protection

The switches are equipped with a quick-make - quick-break operating mechanism. The ON and OFF positions are clearly marked on the front of the switch handle. It is possible to padlock in OFF-position with max. 3 padlocks against unintentional operation. If the contacts are welded together, the handle does not reach the OFF-position.

Features

- Three enclosure sizes for the whole range
- Front operation
- Plastic enclosure in polycarbonate plastic (PC f1), colour RAL 7035
- Degree of protection: IP65, IEC60529
- Standard IEC 60947-3 for Switch-disconnectors
- Cable outlets M25 and M40
- 3- and 4-pole versions
- Black or red-yellow handle
- Neutral link and PE-terminal as standard

Ordering information

Plastic enclosed switch-disconnectors OTU 16...63A



OTU16B3MS2



OTU45BA3MS3



OTU16B3MS2



OTU45BA3MS3

Plastic enclosed switch-disconnectors, 16...63 Amperes, IP65

The delivery includes a multi package containing two or four switches packed in plastic wrap with a cardboard base. The switches are equipped with N- and PE -terminals. Compression glands have to be ordered separately.

Cable entries from top and bottom

Rated current AC-22A AC-23A 415 V 415 V A A	Cable outlets/side	Enclosure dimension			Type	Order number	Weight/ unit kg
		H mm	W mm	D mm			

3-Pole front operated switch-disconnectors

Includes round black handle (I-O and ON-OFF indication)

16	16	2xø25.5 / 2xø25.5	161	100	115	OTU16B3MS2	1SCA132665R1001	0.4
25	20	2xø25.5 / 2xø25.5	161	100	115	OTU25B3MS2	1SCA132666R1001	0.4
32	23	2xø25.5 / 2xø25.5	161	100	115	OTU32B3MS2	1SCA132667R1001	0.4
45	45	2xø40.5 / 2xø40.5	200	146	139	OTU45B3MS3	1SCA132685R1001	0.8
63	63	2xø40.5 / 2xø40.5	200	146	139	OTU63B3MS3	1SCA132686R1001	0.8

4-Pole front operated switch-disconnectors

Includes round black handle (I-O and ON-OFF indication)

16	16	2xø25.5 / 2xø25.5	161	100	115	OTU16B4MS2	1SCA132674R1001	0.4
25	20	2xø25.5 / 2xø25.5	161	100	115	OTU25B4MS2	1SCA132678R1001	0.4
32	23	2xø25.5 / 2xø25.5	161	100	115	OTU32B4MS2	1SCA132681R1001	0.4
45	45	2xø40.5 / 2xø40.5	200	146	139	OTU45B4MS3	1SCA132689R1001	0.8
63	63	2xø40.5 / 2xø40.5	200	146	139	OTU63B4MS3	1SCA132690R1001	0.8

3-Pole front operated switch-disconnectors

Includes round red-yellow handle (I-O and ON-OFF indication)

16	16	2xø25.5 / 2xø25.5	161	100	115	OTU16BA3MS2	1SCA128505R1001	0.4
25	20	2xø25.5 / 2xø25.5	161	100	115	OTU25BA3MS2	1SCA128504R1001	0.4
32	23	2xø25.5 / 2xø25.5	161	100	115	OTU32BA3MS2	1SCA132669R1001	0.4
45	45	2xø40.5 / 2xø40.5	200	146	139	OTU45BA3MS3	1SCA132687R1001	0.8
63	63	2xø40.5 / 2xø40.5	200	146	139	OTU63BA3MS3	1SCA132688R1001	0.8

4-Pole front operated switch-disconnectors

Includes round red-yellow handle (I-O and ON-OFF indication)

16	16	2xø25.5 / 2xø25.5	161	100	115	OTU16BA4MS2	1SCA132682R1001	0.4
25	20	2xø25.5 / 2xø25.5	161	100	115	OTU25BA4MS2	1SCA132683R1001	0.4
32	23	2xø25.5 / 2xø25.5	161	100	115	OTU32BA4MS2	1SCA132684R1001	0.4
45	45	2xø40.5 / 2xø40.5	200	146	139	OTU45BA4MS3	1SCA132691R1001	0.8
63	63	2xø40.5 / 2xø40.5	200	146	139	OTU63BA4MS3	1SCA132692R1001	0.8

Ordering information

Plastic enclosed switch-disconnectors OTU 100...125A

Plastic enclosed switch-disconnectors, 100...125 Amperes, IP65

The delivery includes a black handle (I-O/ON-OFF), PE- terminal and knock out cable entries. Grey enclosure. The 3 pole versions contains a fixed neutral terminal. Handle padlockable in Off position for 3 padlocks.

Cable entries from top and bottom



OTU100B3MS4



OTU100BA3MS4

Cable entries from top and bottom			Enclosure dimension			Type	Order number	Weight/ unit kg
Rated current		Cable outlets/side						
AC-22A	AC-23A							
415 V	415 V							
A	A		H mm	W mm	D mm			
3-Pole front operated switch-disconnectors								
Includes round black handle (I-O and ON-OFF indication)								
100	80	2xø40.5+ø20.5 / 2xø40.5+ø20.5	300	210	136	OTU100B3MS4	1SCA160360R1001	1.9
125	90	2xø40.5+ø20.5 / 2xø40.5+ø20.5	300	210	136	OTU125B3MS4	1SCA160364R1001	1.9
4-Pole front operated switch-disconnectors								
Includes round black handle (I-O and ON-OFF indication)								
100	80	2xø40.5+ø20.5 / 2xø40.5+ø20.5	300	210	136	OTU100B4MS4	1SCA160361R1001	1.9
125	90	2xø40.5+ø20.5 / 2xø40.5+ø20.5	300	210	136	OTU125B4MS4	1SCA160365R1001	1.9
3-Pole front operated switch-disconnectors								
Includes round red-yellow handle (I-O and ON-OFF indication)								
100	80	2xø40.5+ø20.5 / 2xø40.5+ø20.5	300	210	136	OTU100BA3MS4	1SCA160362R1001	1,9
125	90	2xø40.5+ø20.5 / 2xø40.5+ø20.5	300	210	136	OTU125BA3MS4	1SCA160366R1001	1,9
4-Pole front operated switch-disconnectors								
Includes round red-yellow handle (I-O and ON-OFF indication)								
100	80	2xø40.5+ø20.5 / 2xø40.5+ø20.5	300	210	136	OTU100BA4MS4	1SCA160363R1001	1,9
125	90	2xø40.5+ø20.5 / 2xø40.5+ø20.5	300	210	136	OTU125BA4MS4	1SCA160367R1001	1.9

Auxiliary contacts

Auxiliary contacts for enclosed switch-disconnector OTU 16...125

The auxiliary contacts n.o. open before the main contacts. The maximum amount of auxiliary contacts for OTU range is 2+2

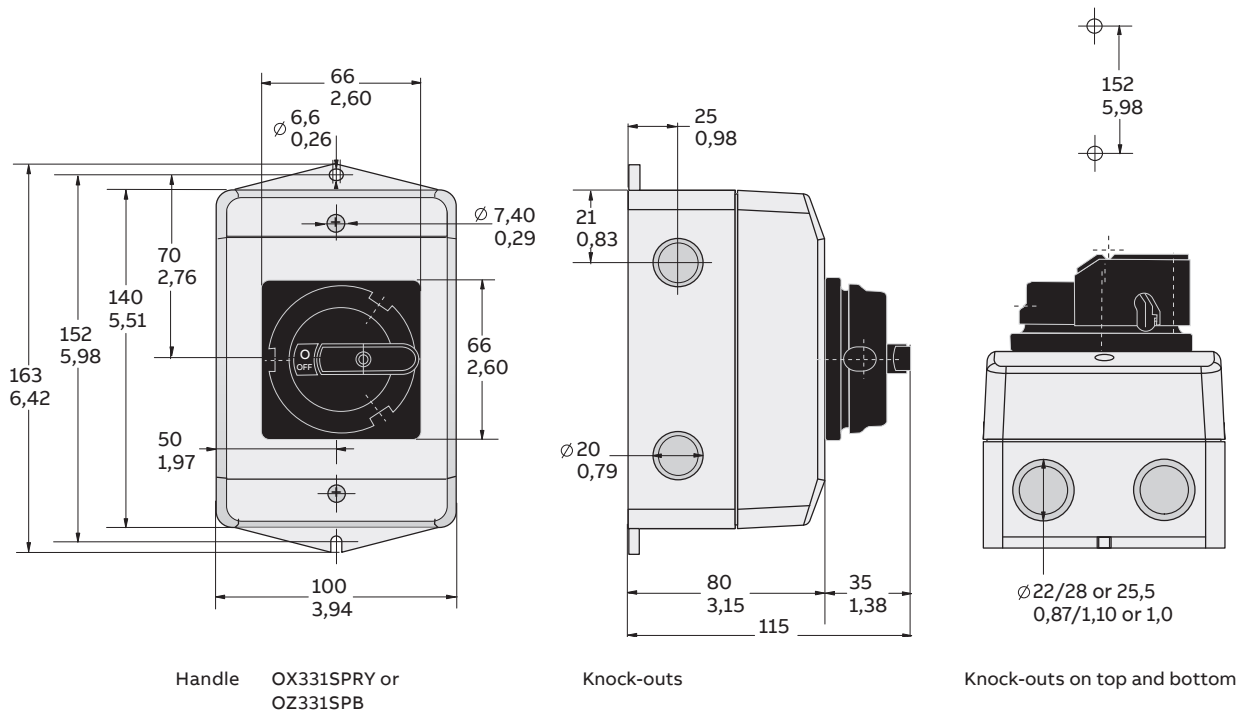


OA1G01, OA1G10

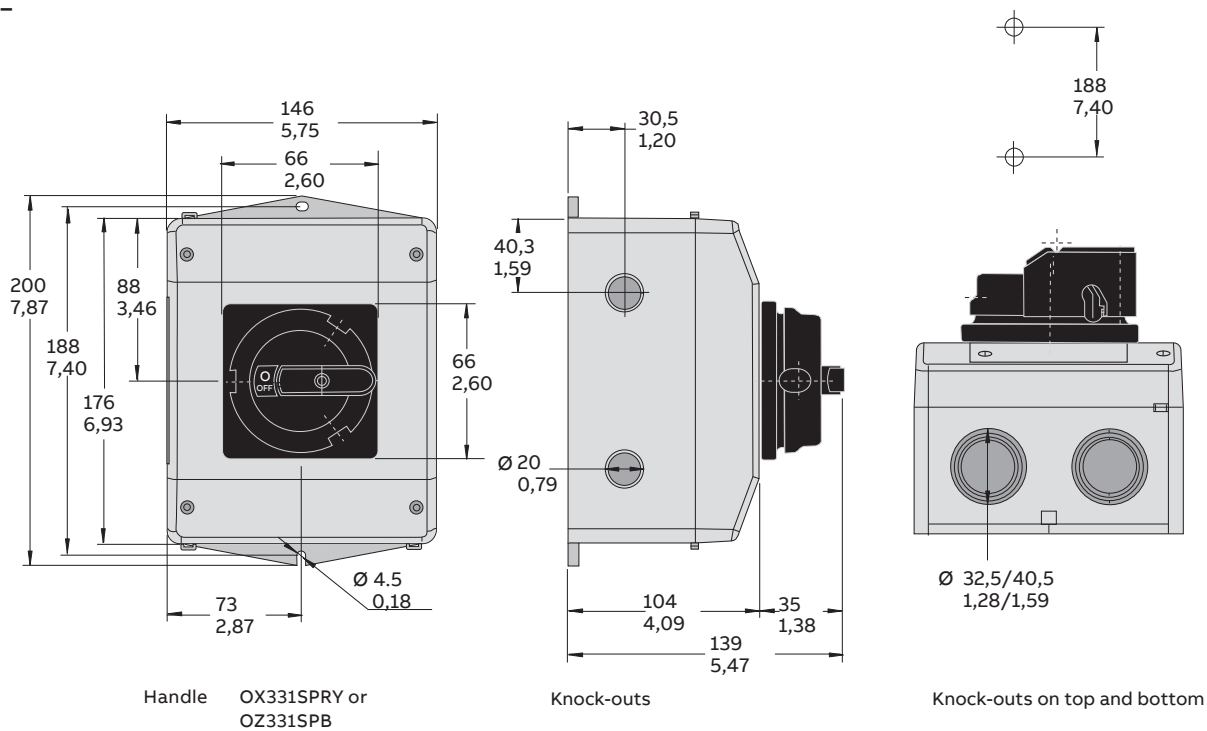
For switches	Auxiliary contact	Mounting to the side of the switch	Type	Order number	Delivery batch pcs	Weight/unit kg
OTU16...125_	1 no	right side	OA1G10	1SCA022353R4970	10	0.03
OTU16...125_	1 nc	left side	OA1G01	1SCA022353R4890	10	0.03

Dimension drawings

OTU16-32_

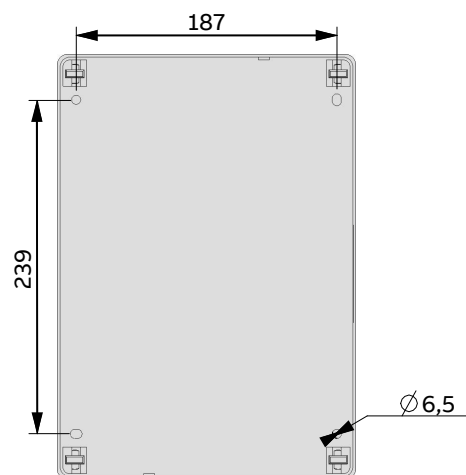
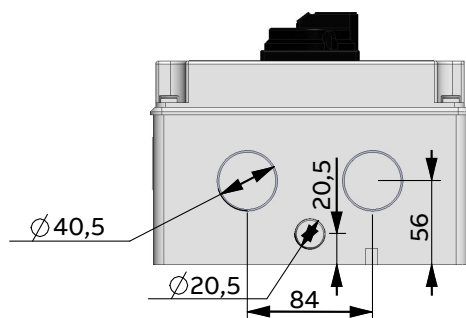
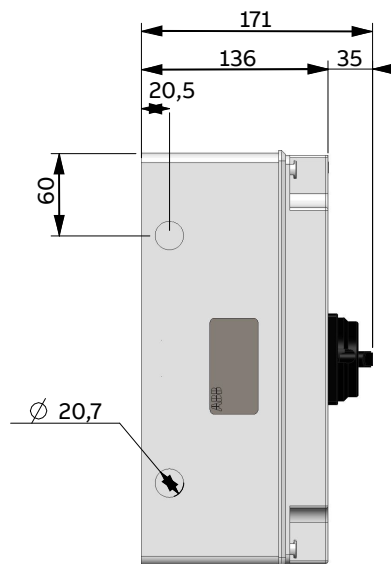
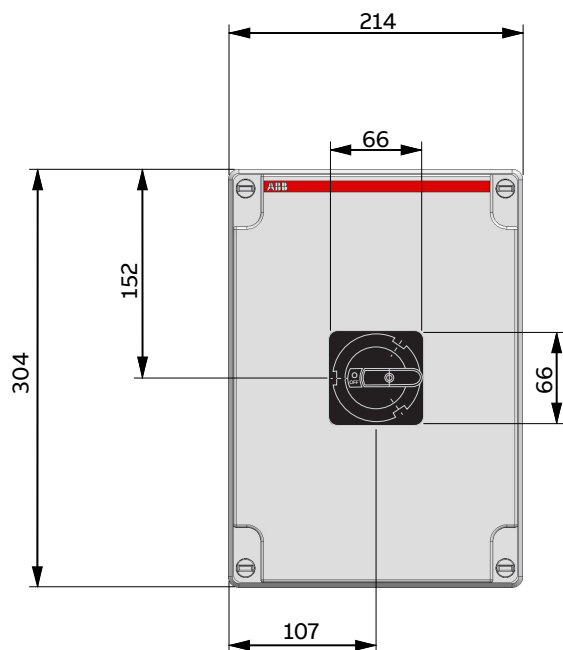


OTU45-63_



Dimension drawings

OTU100_125_



For your notes

—
ABB Oy
Smart Power
P.O. Box 622
FI-65101 Vaasa
Finland

new.abb.com/low-voltage

Find the address of your local sales
organization on the ABB homepage:

www.abb.com/contacts
> Low Voltage Products and Systems

