

SERVICE INSTRUCTION

# TruONE ATS Firmware update

## System update procedure



**Table of Contents**

**1   Material and tools needed ..... 3**

**2   Request ‘Digital User’ role via Ekip Connect 3 ..... 3**

**3   System Update ..... 5**

# 1 Material and tools needed

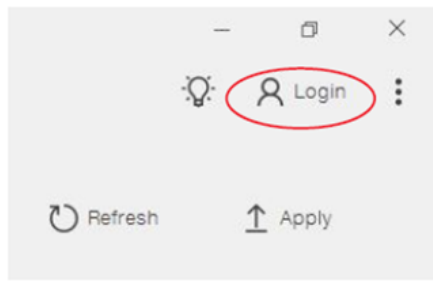
- Ekip Connect 3 desktop software, updated to the latest version, available at this [link](#) (1SDC20011X3000)
- Ekip Programming module (1SDA076154R1)

# 2 Request 'Digital User' role via Ekip Connect 3

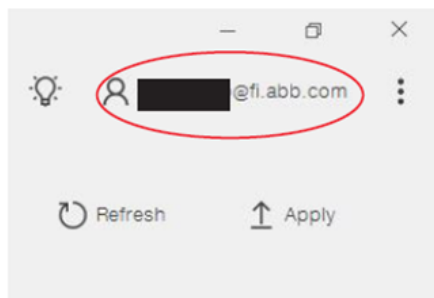
You can skip this and proceed to Part 3: 'SYSTEM UPDATE' if you already have any of the following roles with Ekip Connect 3: Digital User, Internal User, Service L3, Production or Internal R&D.

A. Install Ekip Connect 3.

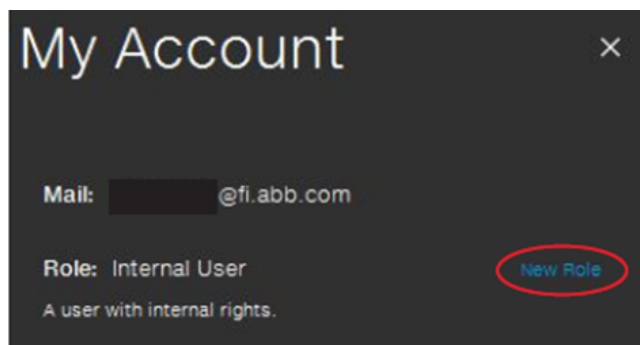
B. Login to MyABB (or create a new MyABB account if you are a new user).



C. Once logged in, select this



D. Select 'New role'



E. Fill in the form and send request for 'Digital User' role.

New Role

×

Name

Surname

Company

Department

Phone

Mail

Country

Address

Public profiles

☒ Digital User

Reserved profiles for ABB only

☐ Internal User
 ☐ Service L3
 ☐ Production
 ☐ Internal R&D

User that needs to update firmware of the device.

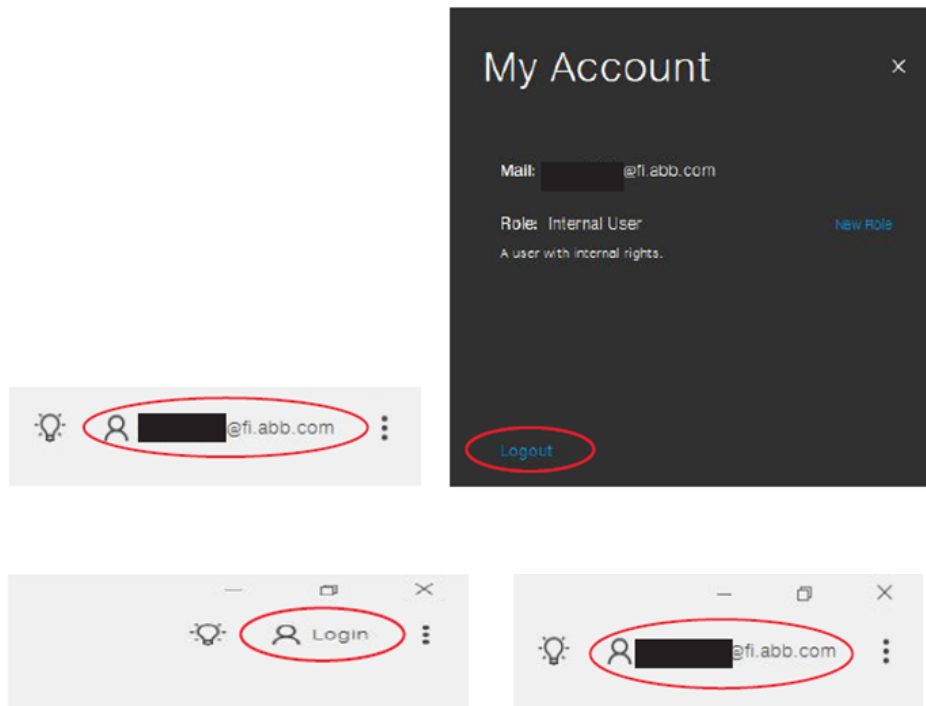
Send Request

Create File

Cancel

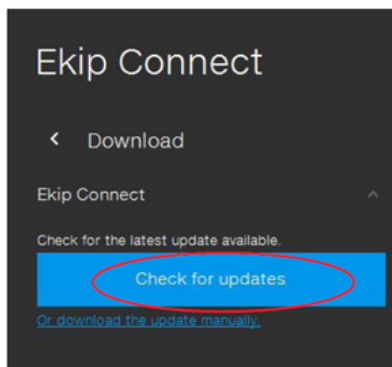
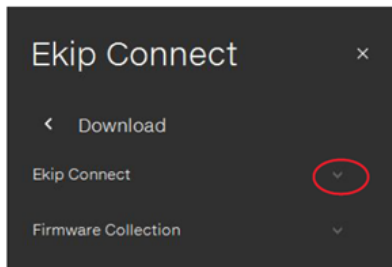
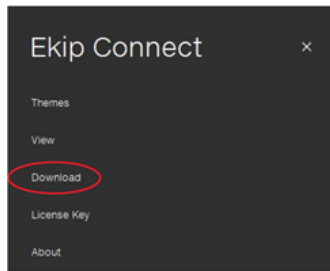
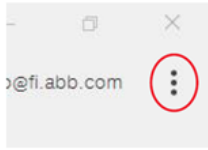
F. Processing the request takes some time so you may close Ekip Connect 3 for now. You will receive email confirmation once your request has been processed and you have been given the 'Digital User' role.

G. To activate the new 'Digital User' role, log out and sign in again.

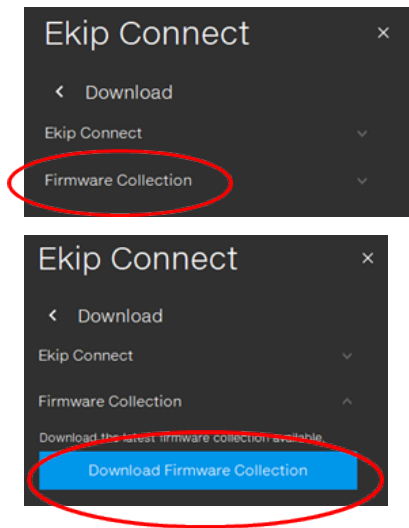


### 3 System update

A. Install Ekip Connect 3 or update to latest version. If already installed, how to update:



## B. Update also Firmware Collection



C. Once updated, connect laptop with Ekip Programming module to mini USB connector of the HMI. The HMI must be connected on the TruONE switch by RJ45 cable or small adapter delivered together with the unit.

Note that the cable length between HMI and controller can be maximum 3 meters. In case you are updating HMI firmware, switch needs to be powered for example with auxiliary power supply (12-24 VDC). In case you are updating controller firmware no power supply to the switch is needed.



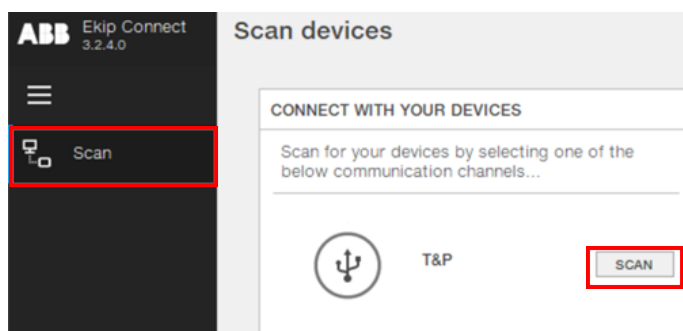
- Ekip Connect connection between HMI and laptop
- Auxiliary power supply



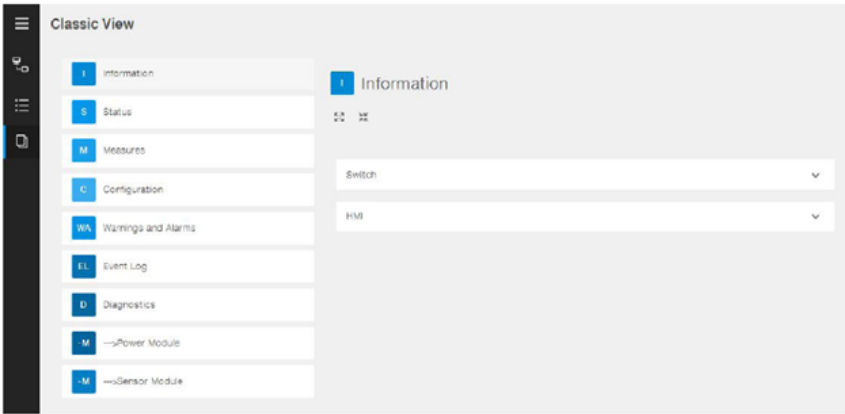
Max. 3 m,  
HMI (RJ45) cable

**IMPORTANT NOTICE:**  
THE CABLE LENGTH BETWEEN THE HMI AND CONTROLLER CAN BE MAX. 3 METERS!

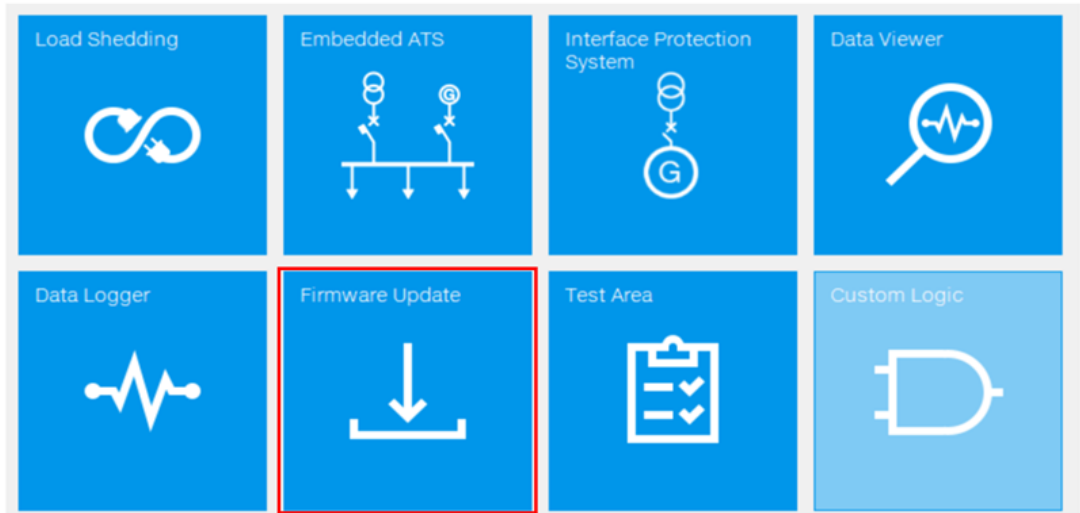
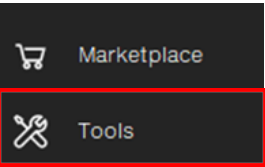
D. Run Ekip Connect 3, select T&P and SCAN



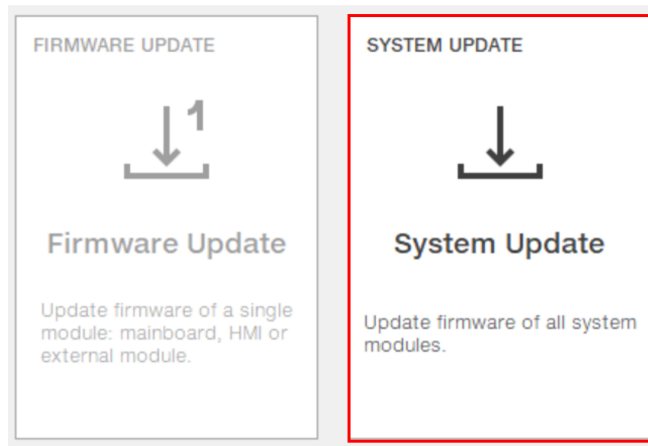
E. You are now connected



F. Select Tools – Firmware update – System update





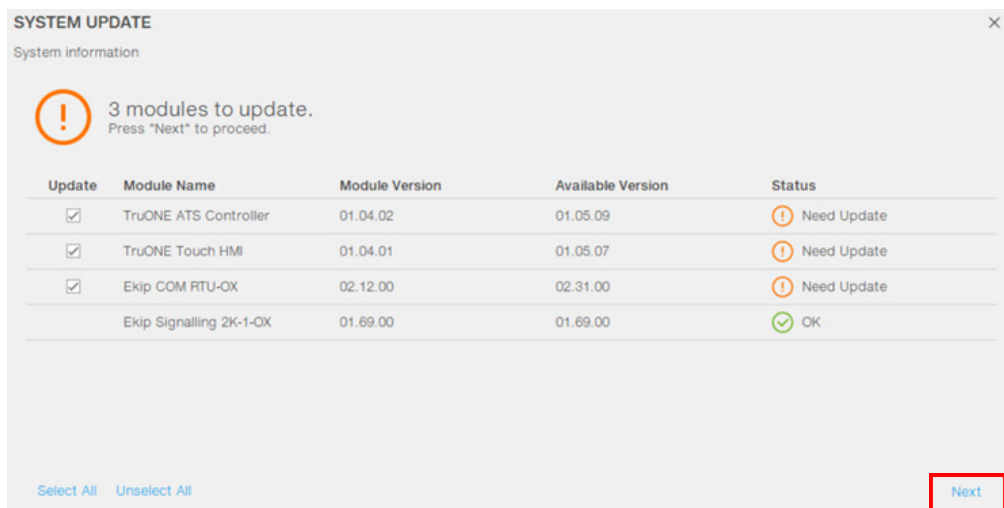


**IMPORTANT NOTICE:**

**DO NOT OPERATE THE DEVICE UNTIL SYSTEM UPDATE IS COMPLETED!**

**ENSURE THAT NO OTHER SOFTWARE OR DEVICES ARE ACTIVELY COMMUNICATING WITH THE DEVICE DURING THE SYSTEM UPDATE PROCESS, IN ORDER TO HAVE A SUCCESSFUL UPDATE.**

**G. Select the modules and press next**



**KEEP YOUR LAPTOP POWERED AND ON DURING THE UPDATE PROCESS. THE UPDATE WILL FAIL IF YOUR LAPTOP GOES TO SLEEP/STANDBY MODE DURING THE UPDATE.**

## H. Fill in the form and select next.

SYSTEM UPDATE

User information
Please, fill in the form.  
At the end of the process a report will be sent to ABB.

Name:
Surname:
Company:
Department:
Phone:
Mail:
Country:
Address:

Previous

Next

## I. Update begins

SYSTEM UPDATE

Updating system

2. TruONE ATS Controller firmware update
Uploading firmware...

Status	Action Name	Details	Progress
Done	Save settings	Export completed.	100 %
Doing	TruONE ATS Controller firmware update	Uploading firmware...	54 %
Todo	TruONE Touch HMI firmware update		
Todo	Ekip COM RTU-OX firmware update		
Todo	Check for calibration		
Todo	Save settings		
Todo	Compare settings		

## J. Once update is ready, to keep the settings, check all boxes and select Restore Settings (this may take a while)

SYSTEM UPDATE

Select variables to restore.

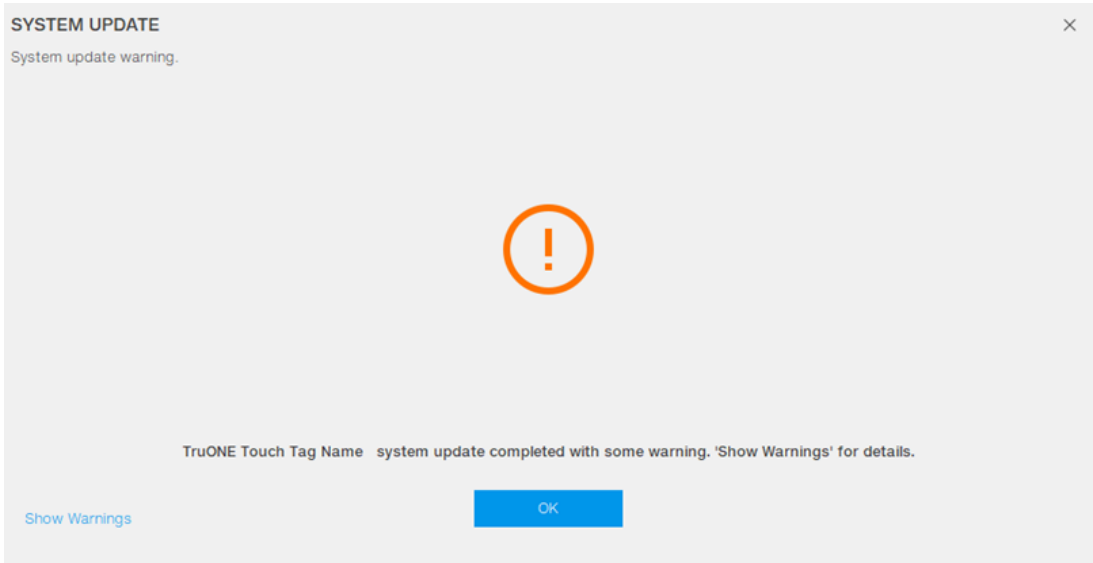
[Check All](#)
[Uncheck All](#)

Variable	Previous Value	Current Value
<input checked="" type="checkbox"/> Configuration.System.Rated Voltage	240 V (1 ph)	400 V (3 ph)
<input checked="" type="checkbox"/> Configuration.System.S1 Power Distribution System	1 Phase (2 Wires)	3 Phases Without Neutral (3 Wires)
<input checked="" type="checkbox"/> Configuration.System.S2 Power Distribution System	1 Phase (2 Wires)	3 Phases Without Neutral (3 Wires)
<input checked="" type="checkbox"/> Configuration.Digital Inputs.Digital Input 1 Function	Remote Test on Load	Emergency Stop
<input checked="" type="checkbox"/> Configuration.Transfer Sequence Delays.Override S1 Fai...	5 s	2 s
<input checked="" type="checkbox"/> Configuration.Transfer Sequence Delays.Transfer from S...	7 s	2 s
<input checked="" type="checkbox"/> Configuration.Transfer Sequence Delays.Override S2 Fai...	4 s	2 s
<input checked="" type="checkbox"/> Configuration.Transfer Sequence Delays.Transfer from S...	11 s	2 s
<input checked="" type="checkbox"/> Configuration.Transfer Sequence Delays.Generator Stop	4 s	300 s
<input checked="" type="checkbox"/> Configuration.Generator Exerciser.Event 1 Status	Non-periodic	Disabled
<input checked="" type="checkbox"/> Configuration.Generator Exerciser.Event 1 Function	Test off load	No function
<input checked="" type="checkbox"/> --->Service.Statistics (--> Save Operations).Contact Wear I	0,148 %	0,000 %
<input checked="" type="checkbox"/> --->Service.Statistics (--> Save Operations).Contact We...	0,148 %	0,000 %

Restore Settings

Cancel

K. As the FW update is completed successfully, a banner will appear on Ekip Connect to inform the user. Ignore the warning in case it appears.





---

## Contact us

### **ABB Oy**

P.O. Box 622  
FI-65101 Vaasa  
Finland

**[abb.com/lowvoltage](http://abb.com/lowvoltage)**