

DISASSEMBLY INSTRUCTIONS

Switch Disconnectors

OT3200–4000

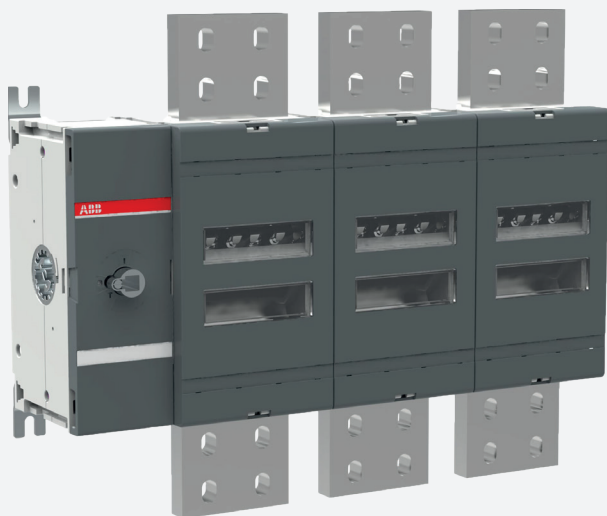


Table of contents

003	Important information
004–005	Disassembly of the switch-disconnector
006–008	Disassembly of the pole
009	Disassembly of the mechanism
010–011	Component list
012	Recycling information in accordance with the WEEE

Important information

This document shows the disassembly process of OT3200–4000 switch-disconnectors. Accessories, such as shafts, clamps, shrouds, neutral links and auxiliary contacts are not included in this document.

Safety Notes

Before starting the disassembly process it is mandatory to put the switch-disconnector in open position.

Disassembly of switch-disconnectors must be performed by qualified and skilled personnel in the electrical field (IEV 195-04-01: person with relevant education and experience to enable him or her to perceive risks and to avoid hazards which electricity can create) and having a detailed knowledge of switch-disconnectors.

Disassembly must be done in an ergonomic workspace which can ensure the protection of the person doing the disassembling.

Applicable national legislation and international standards in force at the time of the disassembly of the switch-disconnectors must be taken into account in addition to the prescriptions illustrated in this document.

ABB declines any responsibility for injury to people or damage to property resulting from a failure to comply with the instructions set out in this document and with any applicable safety standard.

Personal Protective Equipment (PPE)

When doing the disassembling following safety Personal Protective Equipment (PPE) must be worn:

Glasses



Gloves



Safety shoes



Protective clothes



Tools

The disassembly process requires the use of tools (e.g. screwdriver, torx key, pliers). Tools to be used are specified inside each phase of the disassembly process.

Disassembly process

For each phase of the disassembly process the following information is provided:

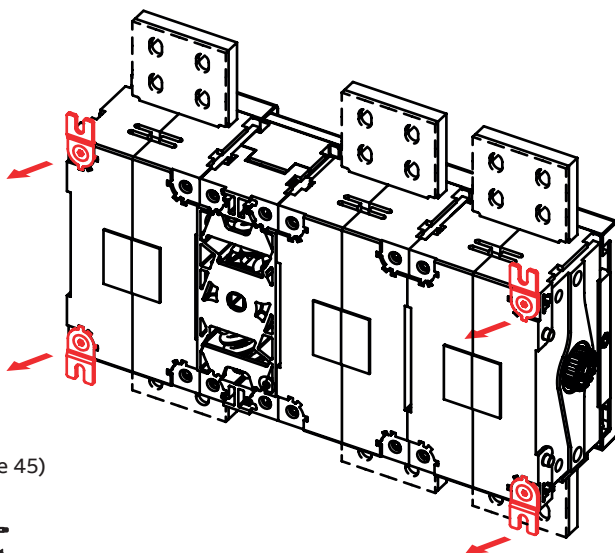
- Part/parts to be disassembled (title of the phase)
- Tools to be used
- Description of actions to be performed
- Pictures showing actions to be performed
- List, quantity and picture of disassembled parts with an indication about separate treatment (when applicable)
- In case of potential hazards signal below is reported:



Disassembly of the switch-disconnector

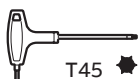
Phase 1 – The mounting plates

Use a torx key to unscrew the 4 screws fixing the mounting plates to the switch-disconnector.

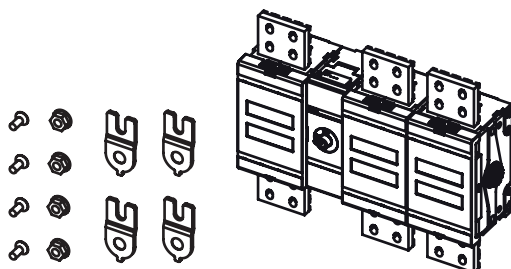


Tools

Torx key (size 45)



Disassembled parts

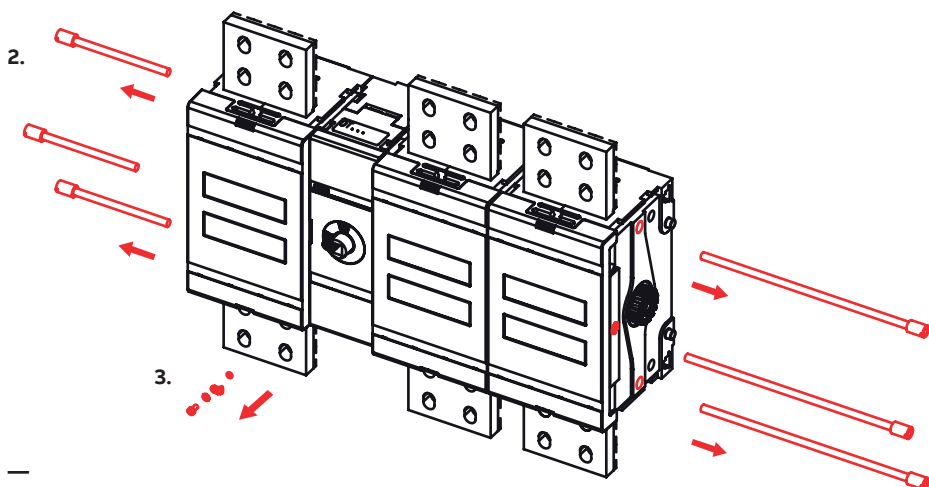


- 4 screws
- 4 hex nuts
- 4 mounting plates
- Mechanism with 1-4 poles

Phase 2 & 3 – Stud screws and shaft locking

2. Use a flat screwdriver to unscrew the stud screws fixing the poles to the mechanism.

3. Use a flat screwdriver to remove shaft locking.

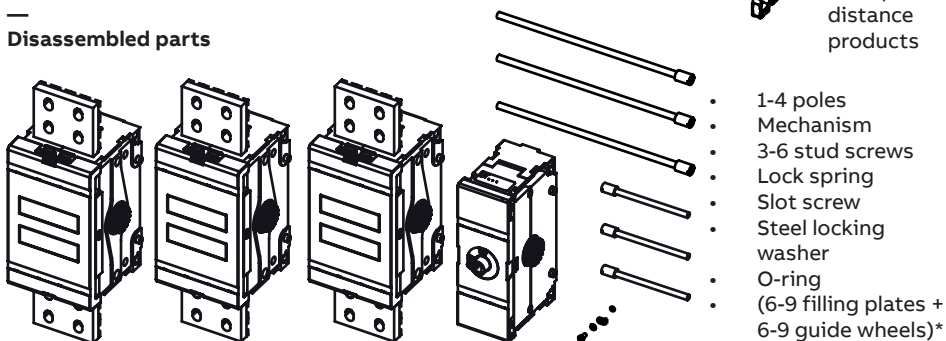


Tools

Flat screwdriver



Disassembled parts



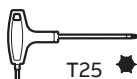
Disassembly of the pole

Phase 1 to 4 – Cover, frame and contact construction

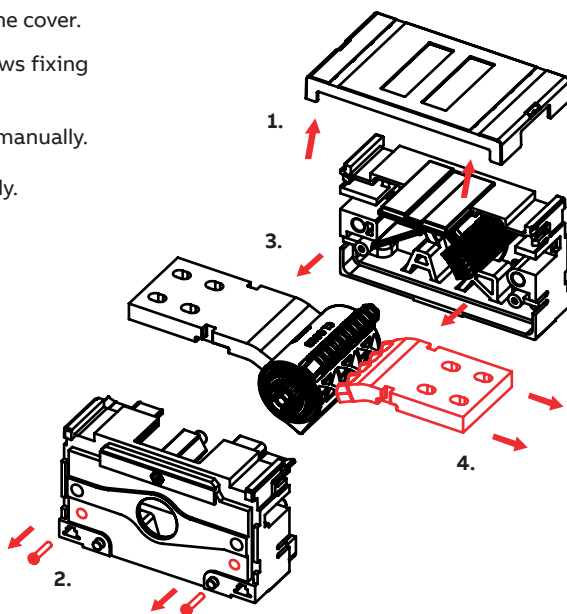
1. Use a flat screwdriver to remove the cover.
2. Use a torx key to unscrew the screws fixing the frames to each other.
3. Remove the contact construction manually.
4. Remove one fixed contact manually.

Tools

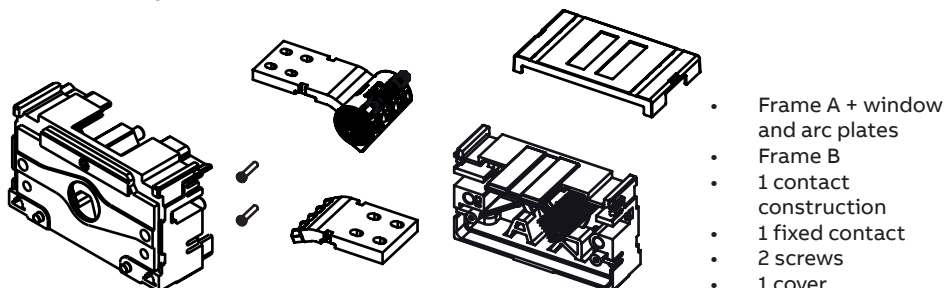
Torx key (size 25)



Flat screwdriver

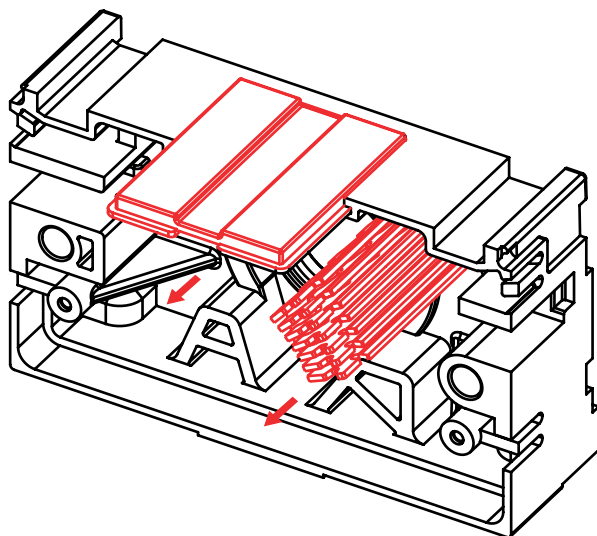


Disassembled parts

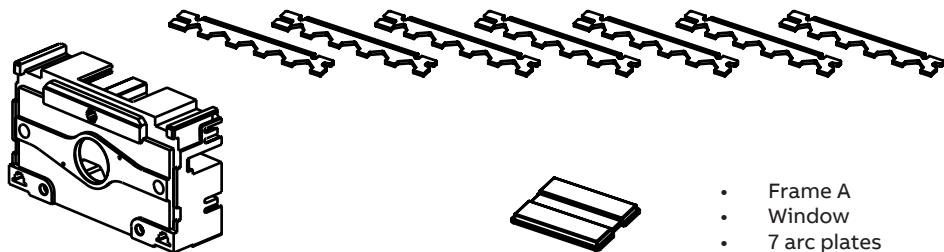


Phase 5 – Arc plates and window

Remove arc plates and window from frame A manually.



Disassembled parts

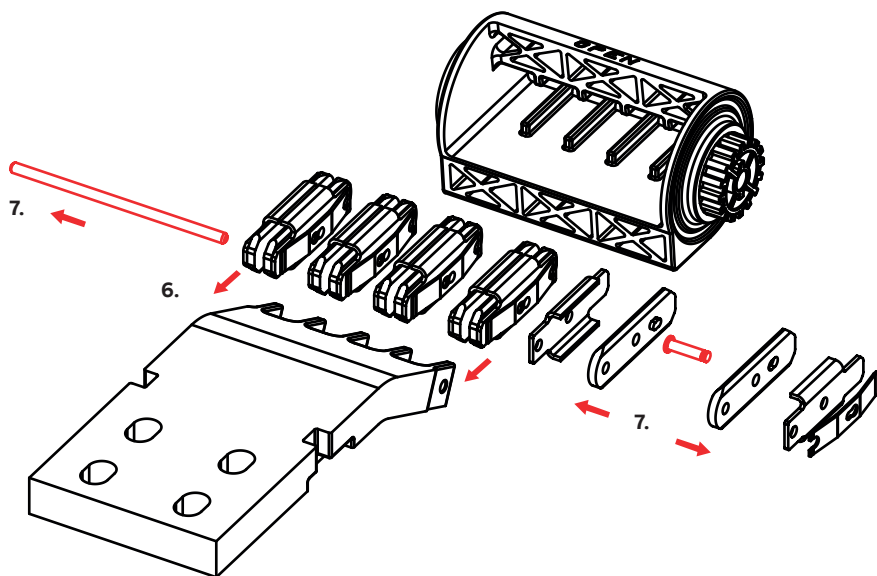


- Frame A
- Window
- 7 arc plates

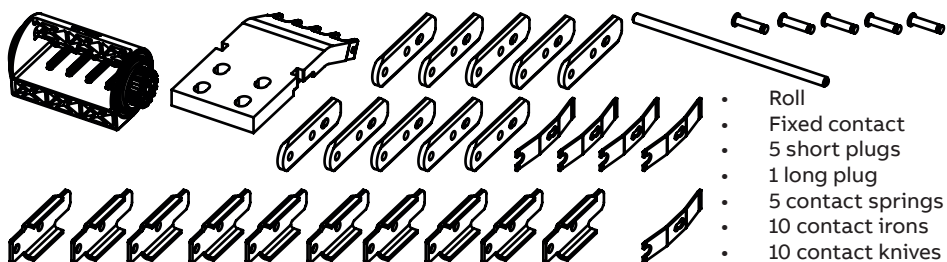
Phase 6 & 7 – The contact construction

6. Remove the second fixed contact and knife structures from the roll manually.

7. Separate contact knives, contact springs and contact irons from each other by removing plugs.



Disassembled parts



Disassembly of the mechanism

1. Remove the cover with the help of a flat screwdriver.

2. Unscrew the 4 screws with a torx key to remove the frame.

3. Remove hexnuts and contact guide support.

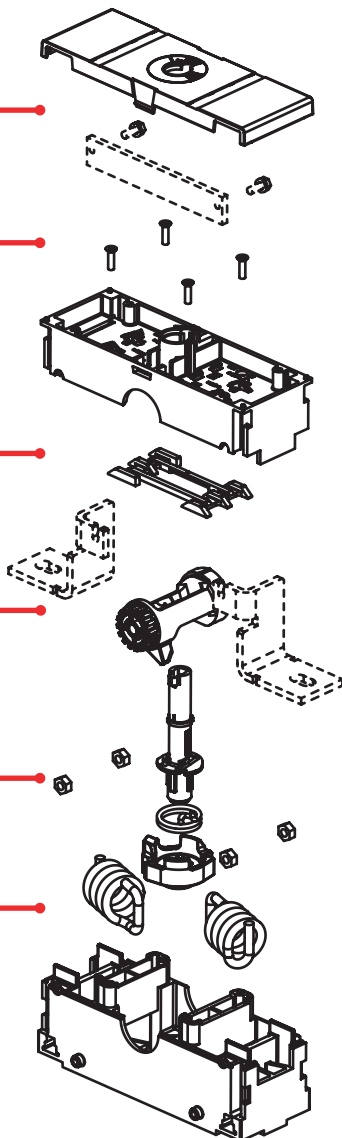
4. Remove the lever.

5. Remove pipesaft, lever and rhythm spring.

6. Remove the springs using pliers.

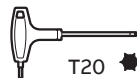


Note! Pay special attention to tensioned springs. Use personal protective equipment.



Tools

Torx key (size 20)



Flat screwdriver



Pliers



Disassembled parts

- Frame
- 2 springs
- 4 steel hex nuts
- Lever
- Pipeshaft
- Lever
- Rhythm spring
- Frame
- 4 screws
- Cover
- Contact guide support

Component list

Switch-disconnector

Component name	Quantity	Material(s)	Weight (g/pc)
Mechanism	1	See component list below	2204,1
Pole	1-4	See component list below	7994,4
Lock spring	1	Steel	0,2
Slot screw	1	Chromium steel	2,0
Steel locking washer	1	Steel	0,4
O-ring	1	Rubber	0,0
Mounting plate	4	Steel	28,2
Screw	4	Steel	9,9
Hex nut	4	Steel	6,4
Stud screw	3-6	Steel	52,0-140,0
Label set/YKLW8009-1	1	Polyest-resin	0,3
Phase barrier	1-3	Polycarbonate	127,6
Address plate	1	Polyest-resin	0,0
Guide wheel*	2-12	Zinc alloy	150,0
Filling plate*	2-12	Polycarbonate	127,0

*Filling plate and guide wheel only in UL / wide phase distance products

Pole

Component name	Quantity/pole	Material(s)	Weight (g/pc)
Frame A	1	Polyest-resin	1012,7
Frame B	1	Polyest-resin	1171,0
Fixed contact	1	Copper	1807,2
Cover	1	Polycarbonate	110,0
Window	1	Polycarbonate	37,3
Arc plate	7	Steel	36,2
Screw	2	Steel	9,2
Roll	1	Polyarylamide-GF	246,2
Long plug	1	Chromium steel	17,7
Short plug	5	Chromium steel	3,5

Component name	Quantity/pole	Material(s)	Weight (g/pc)
Contact knife	10	Copper	46,8
Contact iron	10	Steel	24,9
Contact spring	5	Chromium steel	5,1
Fixed contact	1	Copper	2560,1

Mechanism

Component name	Quantity	Material(s)	Weight (g/pc)
Frame	1	Polyamide	568,2
Frame	1	Polyamide	228,0
Contact guide support	1	Polyamide	14,9
Cover	1	Polycarbonate	70,9
Pipesaft	1	Zinc alloy	282,3
Lever	1	Zinc alloy	282,3
Lever	1	Zinc alloy	365,3
Spring	2	Steel	169,1
Rhythm spring	1	Steel	39,0
Steel hex nut	4	Steel	5,4
Screw	4	Chromium steel	1,7
Label set/YKLW8049-1	1	Polyest-resin	0,2

Recycling information in accordance with the WEEE

The product is marked with the wheelie bin symbol. It indicates that at the end of life the product should enter the recycling system.

You should dispose of it separately at an appropriate collection point and not place it in the normal waste stream.

The figure below shows the wheelie bin symbol indicating separate collection for electrical and electronic equipment (EEE).



The horizontal bar underneath the crossed-out wheelie bin indicates that the equipment has been manufactured after the Directive came into force in 2005.

The wheelie bin symbol is added to the type designation label of the product since 2017.



Contact us

ABB Oy

P.O. Box 622
FI-65101 Vaasa
Finland

abb.com/lowvoltage