

MEDIUM VOLTAGE PRODUCTS CATALOG

Uniswitch switchgear

Spare parts, accessories and kits



Uniswitch switchgear spare parts, accessories and kits

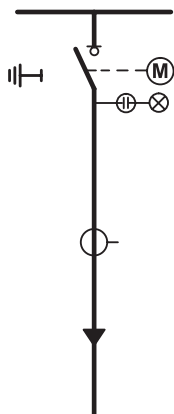
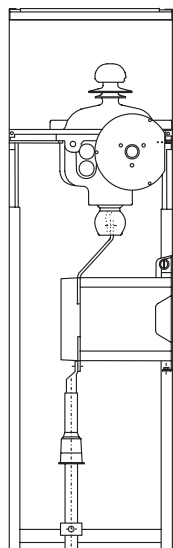
Table of contents

04–05	SDC Switch-Disconnecter Cubicle 04 SFG equipment 04 HV-parts 04 Interlocking, indication and coils 05 Secondary equipment such as, indicators, auxiliary contacts 05 Motor kit for UES-K3/2 spring devices 05 Motor kit for UES-K3/10 spring devices	17	BMC Bus Metering Cubicle 17 HV-parts 17 Secondary equipment such as, indicators, auxiliary contacts
06–07	SDF Switch-Disconnecter with Fuse cubicle 06 SFG equipment 06 HV-parts 06 SDF tripping coils 06 Interlocking, indication and coils 07 Secondary equipment such as, indicators, auxiliary contacts 07 Miscellaneous 07 Motor kit for UES-K3/10 spring devices	18–19	SMD Sectionalising Metering Cubicle with Switch-Disconnecter 18 SFG equipment 18 HV-parts 18 Interlocking, indication and coils 19 Secondary equipment such as, indicators, auxiliary contacts 19 Motor kit for UES-K3/2 spring devices 19 Motor kit for UES-K3/10 spring devices
08–09	CBC Circuit Breaker Cubicle 08 SFG equipment 08 HV-parts 09 Interlocking, indication and coils 09 Secondary equipment such as, indicators, auxiliary contacts	20–21	SMC Sectionalising Metering Cubicle 20 SFG equipment 20 HV-parts 21 Interlocking, indication and coils 21 Secondary equipment such as, indicators, auxiliary contacts
10–11	DBC Direct Busbar connection Cubicle 10 HV-parts 10 Interlocking, indication and coils 11 Secondary equipment such as, indicators, auxiliary contacts 11 Miscellaneous	22–23	SEF Sectionalising Cubicle with Fuse 22 SFG equipment 22 HV-parts 22 SDF tripping coils 22 Interlocking, indication and coils 23 Secondary equipment such as, indicators, auxiliary contacts 23 Miscellaneous 23 Motor kit for UES-K3/10 spring devices
12–13	SEC Sectionalising Cubicle 12 SFG equipment 12 HV-parts 12 Interlocking, indication and coils 13 Secondary equipment such as, indicators, auxiliary contacts 13 Motor kit for UES-K3/2 spring devices 13 Motor kit for UES-K3/10 spring devices	24	CBW Withdrawable Circuit Breaker cubicle 24 HV-parts 24 Interlocking, indication and coils 24 Secondary equipment such as, indicators, auxiliary contacts
14–15	SBC Sectionalising Breaker Cubicle 14 SFG equipment 14 HV-parts 15 Interlocking, indication and coils 15 Secondary equipment such as, indicators, auxiliary contacts	25	SBW Sectionalising Withdrawable Breaker cubicle 25 HV-parts 25 Interlocking, indication and coils 25 Secondary equipment such as, indicators, auxiliary contacts
16	BRC Bus Riser Cubicle 16 HV-parts 16 Secondary equipment such as, indicators, auxiliary contacts	26	Accessories for switchgear 26 Busbar connection material 26 Miscellaneous

Remarks:

- 1) This catalogue refers to Uniswitch produced from 1999 on and equipped with SFG top units. Older versions equipped with SFL are not covered.
- 2) This catalogue doesn't include the circuit breakers and the relevant components. Send the equipment serial number to your local ABB contact for having a dedicated support.

SDC Switch-Disconnecter Cubicle



SFG equipment

Ordering code	Description	Details
1VFS110008R2	Switch-disconnector type SFG	Separate disconnector
UES-K3/10	Single spring actuator	For SFG top units
1VFS120003R2	Pressure indicator	With auxiliary contact
1VFS120008R2	Pressure gauge	Manometer type

HV-parts

Ordering code	Description	Details
1VFM113013R2	CT substitute C1, 12-17 kV	Dummy CT with voltage divider
1VFM113015R2	CT substitute C1, 24 kV	Dummy CT with voltage divider

Interlocking, indication and coils

Ordering code	Description	Details
1VFJ120034R2	Pos. indication and op. set	Suitable for UES-K3/10
1VFJ220016R2	Central interlocking system	Standard
1VFJ220046R2	Central interlocking system	Belgium market
1VFJ230004R2xxxxxx *)	Locking magnet for SFG selector	Close blocking for switch-disconnector or close blocking for earthing switch
1VFJ220051R2	Mechanical part for electric locking	Used together with locking magnet, 1VFJ230004R2
1VFJ220033R2	Key locking, cross interlocking	A) Earthing blocked B) Closing blocked
1VFJ220034R2	Key locking, close blocking (1 of 2)	A) Closing blocked B) Closing blocked

*) Voltage selections, -24VDC, -48VDC, 110VDC, 220VDC, 230VAC

Secondary equipment such as, indicators, auxiliary contacts

Ordering code	Description	Details
1VFM170037P1	Voltage indicator, type Catu CL-497	With integrated LED's
1VFM170038P1	Voltage indicator, type Catu CL-498	With plugs for external lamp unit
1VFM171177P1	Voltage tester, CL-499/101	Separate indication LED for CL-498
1VFM170041P1	Catu cable 1.7 m >12 kV	Cable set for VIS, note exact type depending on several factors
1VFM170042P1	Catu cable 1.7 m 24 kV	Cable set for VIS, note exact type depending on several factors
1VFM112072R2	22-ohm resistance module	Damping resistor for VT's open-delta winding
1VFM112073R2	27-ohm resistance module	Damping resistor for VT's open-delta winding
1VFJ120008R2	Aux. contact, for SFG switch-disconnector	Including wiring to terminalblocks
1VFJ120010R2	Aux. contact for SFG earthing switch	Including wiring to terminalblocks

Motor kit for UES-K3/2 spring devices

Ordering code	Description	Details
1VFM115093R2xxxxxx *)	Motor control kit xxxxxx, 1-spring for UES-K3/2, 375 mm	Includes: Motor and control unit, auxiliary contacts, I/O pushbutton, L/R switch and control relays and M.C.B. complete with wiring.
1VFM115094R2xxxxxx *)	Motor control kit xxxxxx, 1-spring for UES-K3/2, 500 mm	Includes: Motor and control unit, auxiliary contacts, I/O pushbutton, L/R switch and control relays and M.C.B. complete with wiring.

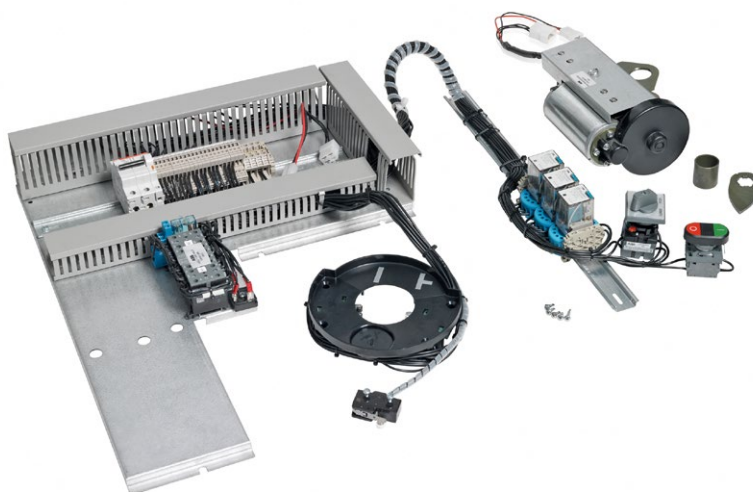
*) Voltage selections, -24VDC, -48VDC, 110VDC, 220VDC, 230VAC

Motor kit for UES-K3/10 spring devices

Ordering code	Description	Details
1VFM115097R2xxxxxx *)	Motor control kit xxxxxx, 1-spring for UES-K3/10, 375 mm	Includes: Motor and control unit, auxiliary contacts, I/O pushbutton, L/R switch and control relays and M.C.B. complete with wiring.
1VFM115098R2xxxxxx *)	Motor control kit xxxxxx, 1-spring for UES-K3/10, 500 mm	Includes: Motor and control unit, auxiliary contacts, I/O pushbutton, L/R switch and control relays and M.C.B. complete with wiring.

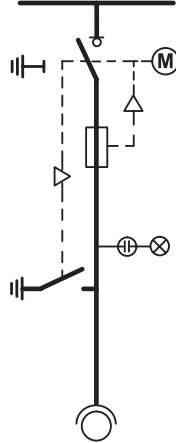
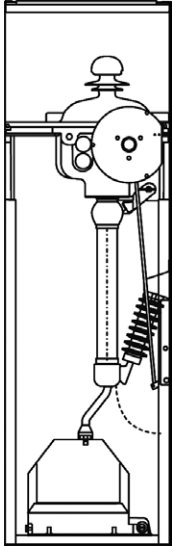
*) Voltage selections, -24VDC, -48VDC, 110VDC, 220VDC, 230VAC



 Single spring actuator UES-K3/10


 Motor control kit

SDF Switch-Disconnecter with Fuse cubicle



SFG equipment

Ordering code	Description	Details
1VFS110008R2	Switch-disconnector type SFG	Separate disconnector
UES-A3/10	Double spring actuator	For SFG top units
UES-A3/4	Double spring actuator	For SFG, <2004
1VFS120003R2	Pressure indicator	With auxiliary contact
1VFS120008R2	Pressure gauge	Manometer type

HV-parts

Ordering code	Description	Details
1VFM133009R2	Fuse contact set IEC/DIN, <2004	For IEC/DIN type fuses, before 2004
1VFM133010R2	Fuse contact set IEC/DIN, >2004	For IEC/DIN type fuses, after 2004
1VFM133011R2	Fuse contact set NF	For NF type fuses, EDF
1VFM123037R2	Fuse base with voltage divider	For SDF cubicle

SDF tripping coils

Ordering code	Description	Details
1VFJ120007R2xxxxxx *)	Tripping coil for SDF	Tripping coil as spare part

*) Voltage selections, -24VDC, -48VDC, 110VDC, 220VDC, 230VAC

Interlocking, indication and coils

Ordering code	Description	Details
1VFJ120038R2	POS. INDICATION AND OP. SET EM/EF	SUITABLE FOR UES-K3/10 AND -A3/10
1VFJ220016R2	CENTRAL INTERLOCKING SYSTEM	STANDARD
1VFJ220046R2	CENTRAL INTERLOCKING SYSTEM	STANDARD
1VFJ230004R2xxxxxx *)	Locking magnet for SFG selector	Close blocking for switch-disconnector or close blocking for earthing switch
1VFJ220032R2	Key locking, transformer interlock	A) Locked in earthed position B) Earthing blocked
1VFJ220051R2	Electric locking, close & earthing switch blocking	Used together with locking magnet, 1VFJ230004R2

*) Voltage selections, -24VDC, -48VDC, 110VDC, 220VDC, 230VAC

Secondary equipment such as, indicators, auxiliary contacts

Ordering code	Description	Details
1VFM170037P1	Voltage indicator, type Catu CL-497	With integrated LED's
1VFM170038P1	Voltage indicator, type Catu CL-498	With plugs for external lamp unit
1VFM171177P1	Voltage tester, CL-499/101	Separate indication LED for CL-498
1VFM170041P1	Catu cable 1.7 m >12 kV	Cable set for VIS, note exact type depending on several factors
1VFM170042P1	Catu cable 1.7 m 24 kV	Cable set for VIS, note exact type depending on several factors
1VFM112072R2	22-ohm resistance module	Damping resistor for VT's open-delta winding
1VFM112073R2	27-ohm resistance module	Damping resistor for VT's open-delta winding
1VFJ120008R2	Aux. contact, for SFG switch-disconnector	Including wiring to terminalblocks
1VFJ120010R2	Aux. contact for SFG earthing switch	Including wiring to terminalblocks
1VFM185S14+P	Fuse tripped aux. contact	Including wiring to terminalblocks

Miscellaneous

Ordering code	Description	Details
1VFJ120020R2	Push button mechanical trip	For double spring device
1VMF113039R2	Fuse tripping	For double spring device

Motor kit for UES-A3/10 spring devices

Ordering code	Description	Details
1VFM115099R2xxxxxx *)	Motor control kit xxxxxx, 2 spring for UES-A3/10, 375 mm	Includes: Motor and control unit, auxiliary contacts, I/O pushbutton, L/R switch and control relays and M.C.B. complete with wiring.
1VFM115100R2xxxxxx *)	Motor control kit xxxxxx, 2-spring for UES-A3/10, 500 mm	Includes: Motor and control unit, auxiliary contacts, I/O pushbutton, L/R switch and control relays and M.C.B. complete with wiring.

*) Voltage selections, -24VDC, -48VDC, 110VDC, 220VDC, 230VAC

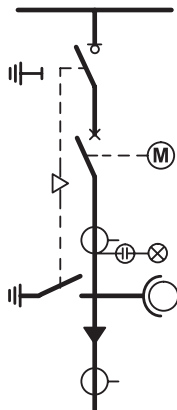
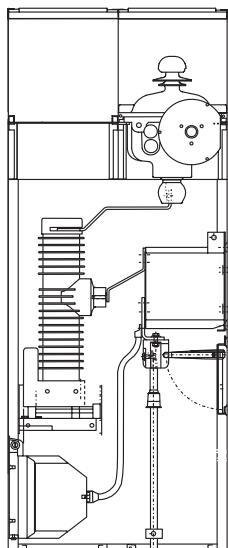


Tripping coil for UES-A3/10



Double spring actuator UES-A3/10

CBC Circuit Breaker Cubicle



SFG equipment

Ordering code	Description	Details
1VFS110008R2	Switch-disconnector type SFG	Separate disconnector
UES-K3/10	Single spring actuator	For SFG top units
1VFS120003R2	Pressure indicator	With auxiliary contact
1VFS120008R2	Pressure gauge	Manometer type

HV-parts

Ordering code	Description	Details
1VFS310001R2	Earthing switch type EM-210	Suitable for UES-K3/10, >2004
1VFM114199R2	Fixed contact for EM-earthingswitch, 24 kV	Contact part for EM and cable connection, only for type 1VFS310001R2
1VFJ220029R2	EM lever system	Suitable for UES-K3/10, >2004
1VFM113013R2	CT substitute C1, 12-17 kV	Dummy CT with voltage divider
1VFM113015R2	CT substitute C1, 24 kV	Dummy CT with voltage divider
1VFM114221R2	VT cable CBC 12...17.5 kV	For CBC cubicle type only (Insulation plate on request)
1VFM114223R2	VT cables CBC 24 kV	For CBC cubicle type only (Insulation plate on request)
	Circuitbreaker retrofit KIT	Please contact factory for support

Interlocking, indication and coils

Ordering code	Description	Details
1VFJ120038R2	POS. indication and op. set EM/EF	Suitable for UES-K3/10 and -A3/10
1VFJ220016R2	Central interlocking system	Standard
1VFJ220046R2	Central interlocking system	Belgium market
1VFJ230004R2xxxxxx *)	Locking magnet for SFG selector	Close blocking for switch-disconnector or close blocking for earthing switch
1VFJ220051R2	Mechanical part for electric locking	Used together with locking magnet, 1VFJ230004R2
1VFJ220032R2	Key locking, transformer interlock	A) Locked in earthed position B) Earthing blocked
1VFJ220033R2	Key locking, cross interlocking	A) Earthing blocked B) Closing blocked
1VFJ220034R2	Key locking, close blocking (1 of 2)	A) Closing blocked B) Closing blocked

*) Voltage selections, -24VDC, -48VDC, 110VDC, 220VDC, 230VAC

Secondary equipment such as, indicators, auxiliary contacts

Ordering code	Description	Details
1VFM170037P1	Voltage indicator, type Catu CL-497	With integrated LED's
1VFM170038P1	Voltage indicator, type Catu CL-498	With plugs for external lamp unit
1VFM171177P1	Voltage tester, CL-499/101	Separate indication LED for CL-498
1VFM170041P1	Catu cable 1.7 m >12 kV	Cable set for VIS, note exact type depending on several factors
1VFM170042P1	Catu cable 1.7 m 24 kV	Cable set for VIS, note exact type depending on several factors
1VFM115080R2	Plug connector HD4/S	Wiring harness for CB
1VFM112072R2	22-ohm resistance module	Damping resistor for VT's open-delta winding
1VFM112073R2	27-ohm resistance module	Damping resistor for VT's open-delta winding
1VFJ120008R2	Aux. contact, for SFG switch-disconnector	Including wiring to terminal blocks
1VFJ120010R2	Aux. contact for SFG earthing switch	Including wiring to terminal blocks

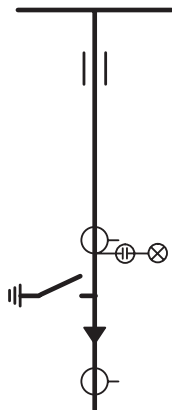
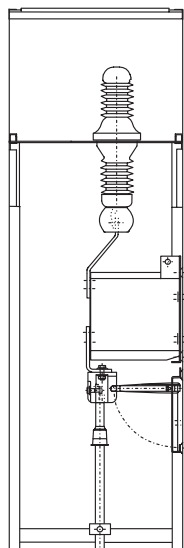


Pressure gauge



Pressure indicator

DBC Direct Busbar connection Cubicle



HV-parts

Ordering code	Description	Details
1VFN310001R2	Bushing for top unit	Separate bushing, 1 pcs
1VFS310001R2	Earthing switch type EM-210	Suitable for UES-K3/11, >2004
1VFM114199R2	Fixed contact for EM-earthingswitch, 24 kV	Contact part for EM and cable connection, only for type 1VFS310001R2
1VFJ220029R2	EM lever system	Suitable for UES-K3/11, >2004
1VFM113013R2	CT substitute C1, 12-17 kV	Dummy CT with voltage divider
1VFM113015R2	CT substitute C1, 24 kV	Dummy CT with voltage divider

Interlocking, indication and coils

Ordering code	Description	Details
1VFJ120034R2	Pos. indication and op. set	Suitable for UES-K3/10
1VFJ220016R2	Central interlocking system	Standard
1VFJ220046R2	Central interlocking system	Belgium market
1VFJ230004R2xxxxxx ^{*)}	Locking magnet for SFG selector	Close blocking for earthingswitch
1VFJ220051R2	Mechanical part for electric locking	Used together with locking magnet, 1VFJ230004R2
1VFJ220033R2	Close blocking for earthingswitch	A) Earthing blocked

^{*)} Voltage selections, -24VDC, -48VDC, 110VDC, 220VDC, 230VAC

Secondary equipment such as, indicators, auxiliary contacts

Ordering code	Description	Details
1VFM170037P1	Voltage indicator, type Catu CL-497	With integrated LED's
1VFM170038P1	Voltage indicator, type Catu CL-498	With plugs for external lamp unit
1VFM171177P1	Voltage tester, CL-499/101	Separate indication LED for CL-498
1VFM170041P1	Catu cable 1.7 m >12 kV	Cable set for VIS, note exact type depending on several factors
1VFM170042P1	Catu cable 1.7 m 24 kV	Cable set for VIS, note exact type depending on several factors
1VFM112072R2	22-ohm resistance module	Damping resistor for VT's open-delta winding
1VFM112073R2	27-ohm resistance module	Damping resistor for VT's open-delta winding
1VFJ120010R2	Aux. contact for SFG earthingswitch	Including wiring to terminalblocks

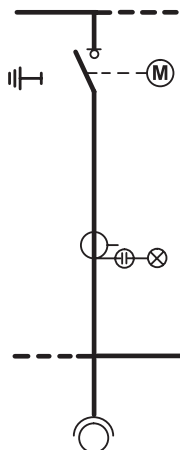
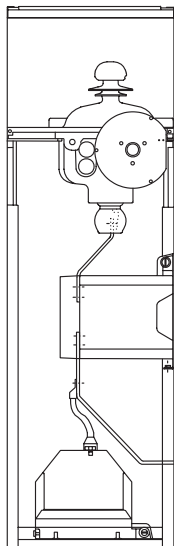
Miscellaneous

Ordering code	Description	Details
UES-K3/11	Single spring actuator	For EM top units



 Single spring actuator UES-K3/11

SEC Sectionalising Cubicle



SFG equipment

Ordering code	Description	Details
1VFS110008R2	Switch-disconnector type SFG	Separate disconnecter
UES-K3/10	Single spring actuator	For SFG top units
1VFS120003R2	Pressure indicator	With auxiliary contact
1VFS120008R2	Pressure gauge	Manometer type

HV-parts

Ordering code	Description	Details
1VFM113013R2	CT substitute C1, 12-17 kV	Dummy CT with voltage divider
1VFM113015R2	CT substitute C1, 24 kV	Dummy CT with voltage divider

Interlocking, indication and coils

Ordering code	Description	Details
1VFJ120034R2	Pos. indication and op. set	Suitable for UES-K3/10
1VFJ220016R2	Central interlocking system	Standard
1VFJ220046R2	Central interlocking system	Belgium market
1VFJ230004R2xxxxxx *)	Locking magnet for SFG selector	Close blocking for switch-disconnector or close blocking for earthing switch
1VFJ220051R2	Mechanical part for electric locking	Used together with locking magnet, 1VFJ230004R2
1VFJ220033R2	Key locking, cross interlocking	A) Earthing blocked B) Closing blocked
1VFJ220034R2	Key locking, close blocking (1 of 2)	A) Closing blocked B) Closing blocked

*) Voltage selections, -24VDC, -48VDC, 110VDC, 220VDC, 230VAC

Secondary equipment such as, indicators, auxiliary contacts

Ordering code	Description	Details
1VFM170037P1	Voltage indicator, type Catu CL-497	With integrated LED's
1VFM170038P1	Voltage indicator, type Catu CL-498	With plugs for external lamp unit
1VFM171177P1	Voltage tester, CL-499/101	Separate indication LED for CL-498
1VFM170041P1	Catu cable 1.7 m >12 kV	Cable set for VIS, note exact type depending on several factors
1VFM170042P1	Catu cable 1.7 m 24 kV	Cable set for VIS, note exact type depending on several factors
1VFM112072R2	22-ohm resistance module	Damping resistor for VT's open-delta winding
1VFM112073R2	27-ohm resistance module	Damping resistor for VT's open-delta winding
1VFJ120008R2	Aux. contact, for SFG switch-disconnector	Including wiring to terminalblocks
1VFJ120010R2	Aux. contact for SFG earthing switch	Including wiring to terminalblocks

Motor kit for UES-K3/2 spring devices

Ordering code	Description	Details
1VFM115093R2xxxxxx *)	Motor control kit xxxxxx, 1-spring for UES-K3/2, 375 mm	Includes: Motor and control unit, auxiliary contacts, I/O pushbutton, L/R switch and control relays and M.C.B. complete with wiring.
1VFM115094R2xxxxxx *)	Motor control kit xxxxxx, 1-spring for UES-K3/2, 500 mm	Includes: Motor and control unit, auxiliary contacts, I/O pushbutton, L/R switch and control relays and M.C.B. complete with wiring.

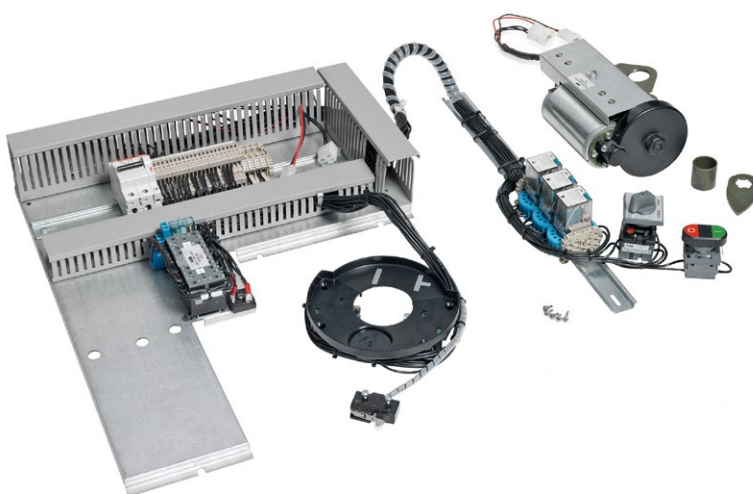
*) Voltage selections, -24VDC, -48VDC, 110VDC, 220VDC, 230VAC

Motor kit for UES-K3/10 spring devices

Ordering code	Description	Details
1VFM115097R2xxxxxx *)	Motor control kit xxxxxx, 1-spring for UES-K3/10, 375 mm	Includes: Motor and control unit, auxiliary contacts, I/O pushbutton, L/R switch and control relays and M.C.B. complete with wiring.
1VFM115098R2xxxxxx *)	Motor control kit xxxxxx, 1-spring for UES-K3/10, 500 mm	Includes: Motor and control unit, auxiliary contacts, I/O pushbutton, L/R switch and control relays and M.C.B. complete with wiring.

*) Voltage selections, -24VDC, -48VDC, 110VDC, 220VDC, 230VAC

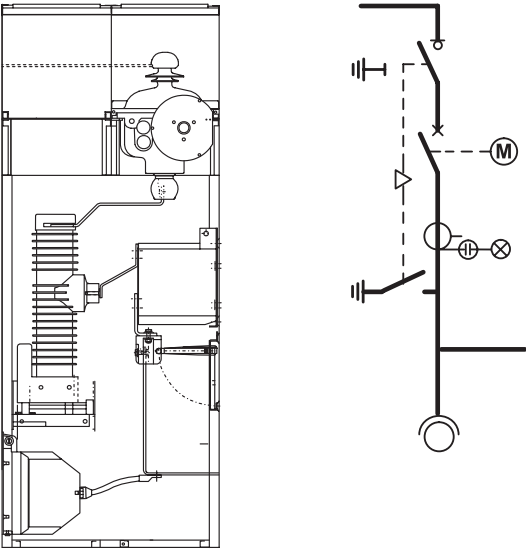


 Key locking, cross interlocking


 Motor control kit



SBC Sectionalising Breaker Cubicle



—
SFG equipment

Ordering code	Description	Details
1VFS110008R2	Switch-disconnector type SFG	Separate disconnector
UES-K3/10	Single spring actuator	For SFG top units
1VFS120003R2	Pressure indicator	With auxiliary contact
1VFS120008R2	Pressure gauge	Manometer type

—
HV-parts

Ordering code	Description	Details
1VFS310001R2	Earthing switch type EM-210	Suitable for UES-K3/10, >2004
1VFM114199R2	Fixed contact for EM-earthingswitch, 24 kV	Contact part for EM and cable connection, only for type 1VFS310001R2
1VFJ220029R2	EM lever system	Suitable for UES-K3/10, >2004
1VFM113013R2	CT substitute C1, 12-17 kV	Dummy CT with voltage divider
1VFM113015R2	CT substitute C1, 24 kV	Dummy CT with voltage divider
	Circuitbreaker retrofit KIT	Please contact factory for support

Interlocking, indication and coils

Ordering code	Description	Details
1VFJ120034R2	Pos. indication and op. set	Suitable for UES-K3/10
1VFJ120038R2	Pos. indication and op. set EM/EF	Suitable for UES-K3/10 and -A3/10
1VFJ220016R2	Central interlocking system	Central interlocking system
1VFJ220046R2	Central interlocking system	Belgium market
1VFJ230004R2xxxxxx *)	Locking magnet for SFG selector	Close blocking for switch-disconnector or close blocking for earthing switch
1VFJ220051R2	Mechanical part for electric locking	Used together with locking magnet, 1VFJ230004R2
1VFJ220033R2	Key locking, cross interlocking	A) Earthing blocked B) Closing blocked
1VFJ220034R2	Key locking, close blocking (1 of 2)	A) Closing blocked B) Closing blocked

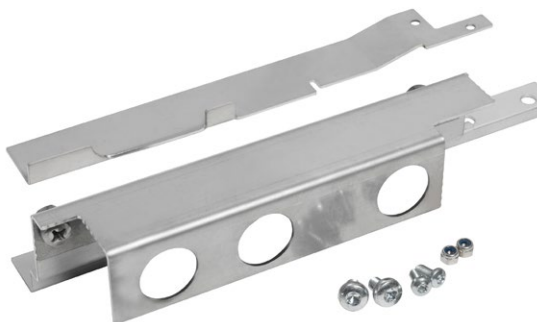
*) Voltage selections, -24VDC, -48VDC, 110VDC, 220VDC, 230VAC

Secondary equipment such as, indicators, auxiliary contacts

Ordering code	Description	Details
1VFM170037P1	Voltage indicator, type Catu CL-497	With integrated LED's
1VFM170038P1	Voltage indicator, type Catu CL-498	With plugs for external lamp unit
1VFM171177P1	Voltage tester, CL-499/101	Separate indication LED for CL-498
1VFM170041P1	Catu cable 1.7 m >12 kV	Cable set for VIS, note exact type depending on several factors
1VFM170042P1	Catu cable 1.7 m 24 kV	Cable set for VIS, note exact type depending on several factors
1VFM112072R2	22-ohm resistance module	Damping resistor for VT's open-delta winding
1VFM112073R2	27-ohm resistance module	Damping resistor for VT's open-delta winding
1VFJ120008R2	Aux. contact, for SFG switch-disconnector	Including wiring to terminal blocks
1VFJ120010R2	Aux. contact for SFG earthing switch	Including wiring to terminal blocks



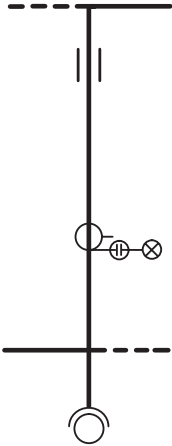
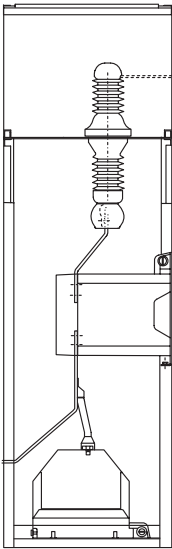
Locking magnet for SFG selector



Mechanical part for electric locking



BRC Bus Riser Cubicle



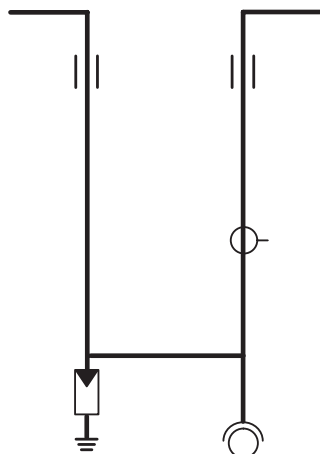
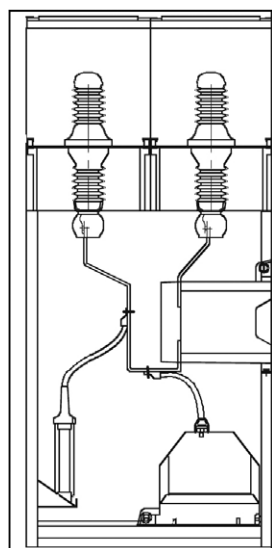
—
HV-parts

Ordering code	Description	Details
1VFN310001R2	Bushing for top unit	Separate bushing, 1 pcs
1VFM113013R2	CT substitute C1, 12-17 kV	Dummy CT with voltage divider
1VFM113015R2	CT substitute C1, 24 kV	Dummy CT with voltage divider

—
Secondary equipment such as, indicators, auxiliary contacts

Ordering code	Description	Details
1VFM170037P1	Voltage indicator, type Catu CL-497	With integrated LED's
1VFM170038P1	Voltage indicator, type Catu CL-498	With plugs for external lamp unit
1VFM171177P1	Voltage tester, CL-499/101	Separate indication LED for CL-498
1VFM170041P1	Catu cable 1.7 m >12 kV	Cable set for VIS, note exact type depending on several factors
1VFM170042P1	Catu cable 1.7 m 24 kV	Cable set for VIS, note exact type depending on several factors
1VFM112072R2	22-ohm resistance module	Damping resistor for VT's open-delta winding
1VFM112073R2	27-ohm resistance module	Damping resistor for VT's open-delta winding

BMC Bus Metering Cubicle



HV-parts

Ordering code	Description	Details
1VFN310001R2	Bushing for top unit	Separate bushing, 1 pcs
1VFM113013R2	CT substitute C1, 12-17 kV	Dummy CT with voltage divider
1VFM113015R2	CT substitute C1, 24 kV	Dummy CT with voltage divider

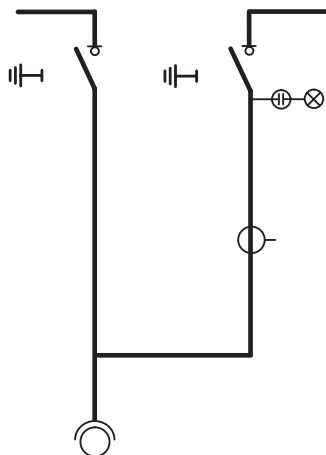
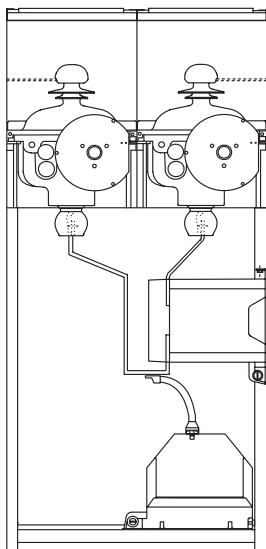
Interlocking, indication and coils

Ordering code	Description	Details
1VFJ220016R2	Central interlocking system	Standard
1VFJ220046R2	Central interlocking system	Belgium market

Secondary equipment such as, indicators, auxiliary contacts

Ordering code	Description	Details
1VFM170037P1	Voltage indicator, type Catu CL-497	With integrated LED's
1VFM170038P1	Voltage indicator, type Catu CL-498	With plugs for external lamp unit
1VFM171177P1	Voltage tester, CL-499/101	Separate indication LED for CL-498
1VFM170041P1	Catu cable 1.7 m >12 kV	Cable set for VIS, note exact type depending on several factors
1VFM170042P1	Catu cable 1.7 m 24 kV	Cable set for VIS, note exact type depending on several factors
1VFM112072R2	22-ohm resistance module	Damping resistor for VT's open-delta winding
1VFM112073R2	27-ohm resistance module	Damping resistor for VT's open-delta winding

SMD Sectionalising Metering Cubicle with Switch-Disconnecter



SFG equipment

Ordering code	Description	Details
1VFS110008R2	Switch-disconnector type SFG	Separate disconnector
1VFN310001R2	Bushing for top unit	Separate bushing, 1 pcs
UES-K3/10	Single spring actuator	For SFG top units
1VFS120003R2	Pressure indicator	With auxiliary contact
1VFS120008R2	Pressure gauge	Manometer type

HV-parts

Ordering code	Description	Details
1VFM113013R2	CT substitute C1, 12-17 kV	Dummy CT with voltage divider
1VFM113015R2	CT substitute C1, 24k V	Dummy CT with voltage divider

Interlockings and coils

Ordering code	Description	Details
1VFJ120034R2	POS. INDICATION AND OP. SET	SUITABLE FOR UES-K3/10
1VFJ220016R2	CENTRAL INTERLOCKING SYSTEM	STANDARD
1VFJ220046R2	CENTRAL INTERLOCKING SYSTEM	BELGIUM MARKET
1VFJ230004R2xxxxxx *)	Locking magnet for SFG selector	Close blocking for switch-disconnector or close blocking for earthing switch
1VFJ220033R2	Key locking, cross interlocking	A) Earthing blocked B) Closing blocked
1VFJ220034R2	Key locking, close blocking (1 of 2)	A) Closing blocked B) Closing blocked
1VFJ220051R2	Electric locking, close & earthing switch blocking	Used together with locking magnet, 1VFJ230004R2

*) Voltage selections, -24VDC, -48VDC, 110VDC, 220VDC, 230VAC

Secondary equipment such as, indicators, auxiliary contacts

Ordering code	Description	Details
1VFM170037P1	Voltage indicator, type Catu CL-497	With integrated LED's
1VFM170038P1	Voltage indicator, type Catu CL-498	With plugs for external lamp unit
1VFM171177P1	Voltage tester, CL-499/101	Separate indication LED for CL-498
1VFM170041P1	Catu cable 1.7 m >12 kV	Cable set for VIS, note exact type depending on several factors
1VFM170042P1	Catu cable 1.7 m 24 kV	Cable set for VIS, note exact type depending on several factors
1VFM112072R2	22-ohm resistance module	Damping resistor for VT's open-delta winding
1VFM112073R2	27-ohm resistance module	Damping resistor for VT's open-delta winding
1VFJ120008R2	Aux. contact, for SFG switch-disconnector	Including wiring to terminalblocks
1VFJ120010R2	Aux. contact for SFG earthing switch	Including wiring to terminalblocks

Motor kit for UES-K3/2 spring devices

Ordering code	Description	Details
1VFM115093R2xxxxxx *)	Motor control kit xxxxxx, 1-spring for UES-K3/2, 375 mm	Includes: Motor and control unit, auxiliary contacts, I/O pushbutton, L/R switch and control relays and M.C.B. complete with wiring.

*) Voltage selections, -24VDC, -48VDC, 110VDC, 220VDC, 230VAC

Motor kit for UES-K3/10 spring devices

Ordering code	Description	Details
1VFM115097R2xxxxxx *)	Motor control kit xxxxxx, 1-spring for UES-K3/10, 375 mm	Includes: Motor and control unit, auxiliary contacts, I/O pushbutton, L/R switch and control relays and M.C.B. complete with wiring.

*) Voltage selections, -24VDC, -48VDC, 110VDC, 220VDC, 230VAC



Voltage indicator CL-497



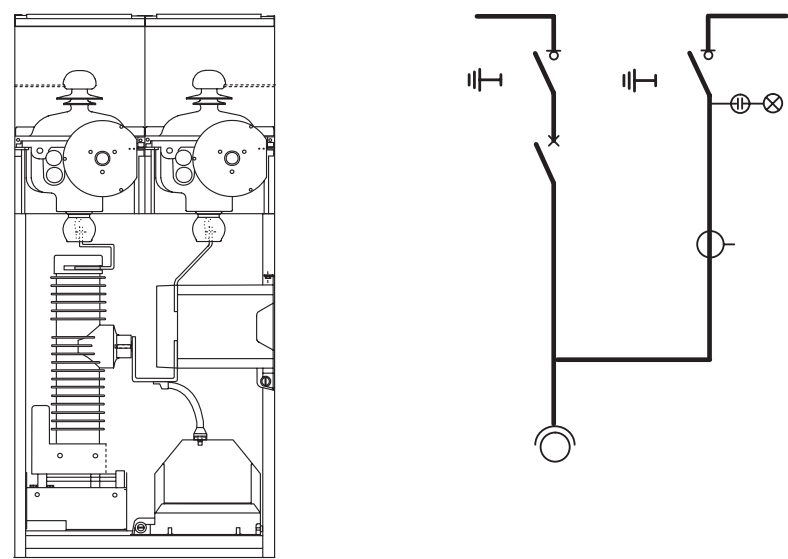
Voltage indicator CL-498



Cable set for VIS



SMC Sectionalising Metering Cubicle



—
SFG equipment

Ordering code	Description	Details
1VFS110008R2	Switch-disconnector type SFG	Separate disconnector
1VFN310001R2	Bushing for top unit	Separate bushing, 1 pcs
UES-K3/10	Single spring actuator	For SFG top units
1VFS120003R2	Pressure indicator	With auxiliary contact
1VFS120008R2	Pressure gauge	Manometer type

—
HV-parts

Ordering code	Description	Details
1VFM113013R2	CT substitute C1, 12-17 kV	Dummy CT with voltage divider
1VFM113015R2	CT substitute C1, 24k V	Dummy CT with voltage divider
	Circuitbreaker retrofit KIT	Please contact factory for support

Interlocking, indication and coils

Ordering code	Description	Details
1VFJ120034R2	Pos. indication and op. set	suitable for UES-K3/10
1VFJ220016R2	Central interlocking system	Standard
1VFJ220046R2	Central interlocking system	Belgium market
1VFJ230004R2xxxxx *)	Locking magnet for SFG selector	Close blocking for switch-disconnector or close blocking for earthing switch
1VFJ220033R2	Key locking, cross interlocking	A) Earthing blocked B) Closing blocked
1VFJ220034R2	Key locking, close blocking (1 of 2)	A) Closing blocked B) Closing blocked
1VFJ220051R2	Electric locking, close & earthing switch blocking	Used together with locking magnet, 1VFJ230004R2

*) Voltage selections, -24VDC, -48VDC, 110VDC, 220VDC, 230VAC

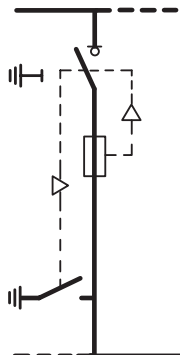
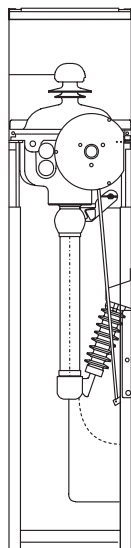
Secondary equipment such as, indicators, auxiliary contacts

Ordering code	Description	Details
1VFM170037P1	Voltage indicator, type Catu CL-497	With integrated LED's
1VFM170038P1	Voltage indicator, type Catu CL-498	With plugs for external lamp unit
1VFM171177P1	Voltage tester, CL-499/101	Separate indication LED for CL-498
1VFM170041P1	Catu cable 1.7 m >12 kV	Cable set for VIS, note exact type depending on several factors
1VFM170042P1	Catu cable 1.7 m 24 kV	Cable set for VIS, note exact type depending on several factors
1VFM115080R2	Plug connector HD4/S	Wiring harness for CB
1VFM112072R2	22-ohm resistance module	Damping resistor for VT's open-delta winding
1VFM112073R2	27-ohm resistance module	Damping resistor for VT's open-delta winding
1VFJ120008R2	Aux. contact, for SFG switch-disconnector	Including wiring to terminal blocks
1VFJ120010R2	Aux. contact for SFG earthing switch	Including wiring to terminal blocks



Resistance module

SEF Sectionalising Cubicle with Fuse



SFG equipment

Ordering code	Description	Details
1VFS110008R2	Switch-disconnector type SFG	Separate disconnector
UES-A3/10	Double spring actuator	For SFG top units
UES-A3/4	Double spring actuator	For SFG, <2004
1VFS120003R2	Pressure indicator	With auxiliary contact
1VFS120008R2	Pressure gauge	Manometer type

HV-parts

Ordering code	Description	Details
1VFM133009R2	Fuse contact set IEC/DIN, <2004	For IEC/DIN type fuses, before 2004
1VFM133010R2	Fuse contact set IEC/DIN, >2004	For IEC/DIN type fuses, after 2004
1VFM133011R2	Fuse contact set NF	For NF type fuses, EDF
1VFM123037R2	Fuse base with voltage divider	For SDF cubicle

SDF tripping coils

Ordering code	Description	Details
1VFJ120007R2xxxxxx *)	Tripping coil for SDF	Tripping coil as spare part

*) Voltage selections, -24VDC, -48VDC, 110VDC, 220VDC, 230VAC

Interlocking, indication and coils

Ordering code	Description	Details
1VFJ120038R2	Pos. indication and op. set EM/EF	suitable for UES-K3/10 and -A3/10
1VFJ220016R2	Central interlocking system	Standard
1VFJ220046R2	Central interlocking system	Belgium market
1VFJ230004R2xxxxxx *)	Locking magnet for SFG selector	Close blocking for switch-disconnector or close blocking for earthing switch
1VFJ220032R2	Key locking, transformer interlock	A) Locked in earthed position B) Earthing blocked
1VFJ220051R2	Electric locking, close & earthing switch blocking	Used together with locking magnet, 1VFJ230004R2

*) Voltage selections, -24VDC, -48VDC, 110VDC, 220VDC, 230VAC

Secondary equipment such as, indicators, auxiliary contacts

Ordering code	Description	Details
1VFM170037P1	Voltage indicator, type Catu CL-497	With integrated LED's
1VFM170038P1	Voltage indicator, type Catu CL-498	With plugs for external lamp unit
1VFM171177P1	Voltage tester, CL-499/101	Separate indication LED for CL-498
1VFM170041P1	Catu cable 1.7 m >12 kV	Cable set for VIS, note exact type depending on several factors
1VFM170042P1	Catu cable 1.7 m 24 kV	Cable set for VIS, note exact type depending on several factors
1VFM112072R2	22-ohm resistance module	Damping resistor for VT's open-delta winding
1VFM112073R2	27-ohm resistance module	Damping resistor for VT's open-delta winding
1VFI120008R2	Aux. contact, for SFG switch-disconnector	Including wiring to terminalblocks
1VFI120010R2	Aux. contact for SFG earthing switch	Including wiring to terminalblocks
1VFM185S14+P	Fuse tripped aux. contact	Including wiring to terminalblocks

Miscellaneous

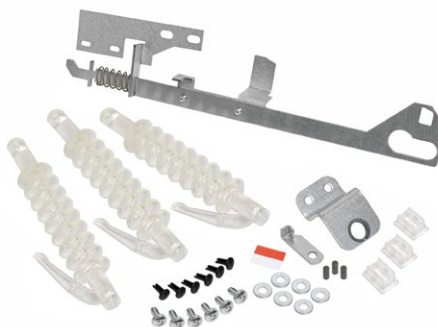
Ordering code	Description	Details
1VFI120020R2	Push button mechanical trip	For double spring device
1VFM113039R2	Fuse tripping	For double spring device

Motor kit for UES-A3/10 spring devices

Ordering code	Description	Details
1VFM115099R2xxxxxx *)	Motor control kit xxxxxx, 2 spring for UES-A3/10, 375 mm	Includes: Motor and control unit, auxiliary contacts, I/O pushbutton, L/R switch and control relays and M.C.B. complete with wiring.
1VFM115100R2xxxxxx *)	Motor control kit xxxxxx, 2-spring for UES-A3/10, 500 mm	Includes: Motor and control unit, auxiliary contacts, I/O pushbutton, L/R switch and control relays and M.C.B. complete with wiring.

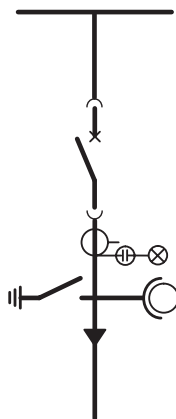
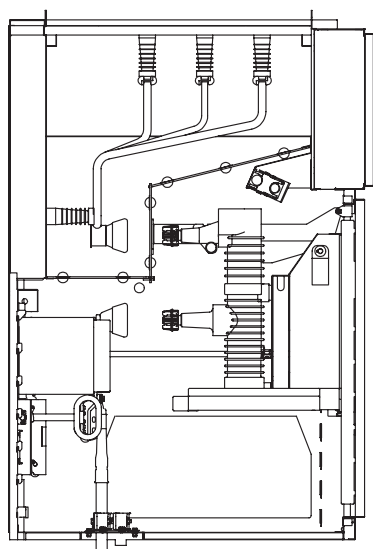
*) Voltage selections, -24VDC, -48VDC, 110VDC, 220VDC, 230VAC



 Auxiliary contact, for SFG


 Fuse tripping

CBW Withdrawable Circuit Breaker cubicle



— HV-parts

Ordering code	Description	Details
1VFM114125R2	Cable connection bars CBW	For 2// cable connections
1VFM124007R2	Fixed contact for CB truck, lower	For CBW cubicle only
1VFM184214P1	Fixed contact for CB truck, upper	For CBW cubicle only
1VFM124008R2	Field control cup	For CB truck fixed contact
1VFM184223P1	Insulation cup upper fixed contacts	For CBW cubicle only
1VFM114102R2	Fixed contact for EM-earthingswitch	Contact part for EM and cable connection, only for W-cubicles
	Circuitbreaker retrofit KIT	Please contact factory for support

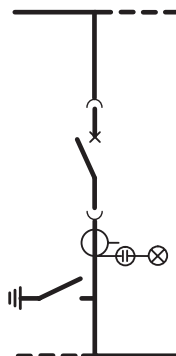
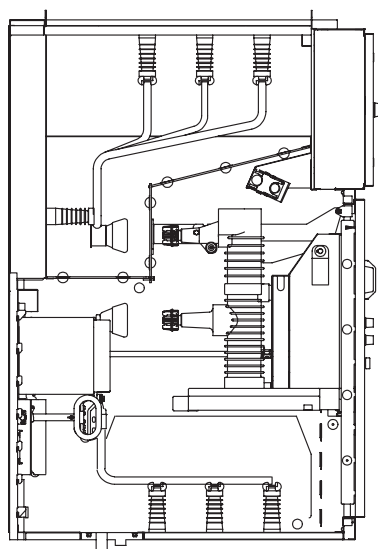
— Interlocking, indication and coils

Ordering code	Description	Details
1VFM126007R2	Locking magnet EM 220VAC	Close blocking for earthingswitch
1VFM126013R2	Locking magnet EM 24VDC	Close blocking for earthingswitch
1VFM126014R2	Locking magnet EM 48VDC	Close blocking for earthingswitch
1VFM126016R2	Locking magnet EM 110VDC	Close blocking for earthingswitch
1VFM126017R2	Locking magnet EM 220VDC	Close blocking for earthingswitch

— Secondary equipment such as, indicators, auxiliary contacts

Ordering code	Description	Details
1VFM170037P1	Voltage indicator, type Catu CL-497	With integrated LED's
1VFM170038P1	Voltage indicator, type Catu CL-498	With plugs for external lamp unit
1VFM171177P1	Voltage tester, CL-499/101	Separate indication LED for CL-498
1VFM170052P1	Catu cable CBW 10-24 kV	M 92-1512/5, for 10...24 kV W-cubicles
1VFM170054P1	Catu cable CBW 7.2 kV	M 92-1510/5, for 7.5 kV W-cubicles
1VFM112072R2	22-ohm resistance module	Damping resistor for VT's open-delta winding
1VFM112073R2	27-ohm resistance module	Damping resistor for VT's open-delta winding

SBW Sectionalising Withdrawable Breaker cubicle



— HV-parts

Ordering code	Description	Details
1VFM124007R2	Fixed contact for CB truck, lower	For CBW cubicle only
1VFM184214P1	Fixed contact for CB truck, upper	For CBW cubicle only
1VFM124008R2	Field control cup	For CB truck fixed contact
1VFM184223P1	Insulation cup upper fixed contacts	For CBW cubicle only
1VFM114102R2	Fixed contact for EM-earthingswitch	Contact part for EM and cable connection, only for W-cubicles
	Circuitbreaker retrofit KIT	Please contact factory for support

— Interlocking, indication and coils

Ordering code	Description	Details
1VFM126007R2	Locking magnet EM 220VAC	Close blocking for earthingswitch
1VFM126013R2	Locking magnet EM 24VDC	Close blocking for earthingswitch
1VFM126014R2	Locking magnet EM 48VDC	Close blocking for earthingswitch
1VFM126015R2	Locking magnet EM 60VDC	Close blocking for earthingswitch
1VFM126016R2	Locking magnet EM 110VDC	Close blocking for earthingswitch
1VFM126017R2	Locking magnet EM 220VDC	Close blocking for earthingswitch
1VFM126018R2	Locking magnet EM 110VAC	Close blocking for earthingswitch
1VFM126024R2	Locking magnet EM 125VDC	Close blocking for earthingswitch

— Secondary equipment such as, indicators, auxiliary contacts

Ordering code	Description	Details
1VFM170037P1	Voltage indicator, type Catu CL-497	With integrated LED's
1VFM170038P1	Voltage indicator, type Catu CL-498	With plugs for external lamp unit
1VFM171177P1	Voltage tester, CL-499/101	Separate indication LED for CL-498
1VFM170052P1	Catu cable CBW 10-24 kV	M 92-1512/5, FOR 10...24 kV W-cubicles
1VFM170054P1	Catu cable CBW 7.2 kV	M 92-1510/5, FOR 7.5 kV W-cubicles
1VFM112072R2	22-ohm resistance module	Damping resistor for VT's open-delta winding
1VFM112073R2	27-ohm resistance module	Damping resistor for VT's open-delta winding



Accessories for switchgear

Busbars, connection material

Ordering code	Description	Details
1VFM114013R2	Connection material b.b. 17.5, middle	Busbar connection 12-17.5 kV
1VFM114014R2	Connection material b.b. 24, middle	Busbar connection 24 kV
1VFM114015R2	Connection material b.b. 24, right	Busbar connection 24 kV
1VFM114027R2	Connection material b.b. 17.5, end	Busbar connection 12-17.5 kV
1VFM114063R2	Connection material b.b. 24, left	Busbar connection 24 kV

Miscellaneous

Ordering code	Description	Details
1VFJ220002R2	Operation handle	Suitable for cubicles with SFG switch-disconnector
1VFM126004R2	Charging crank for earthing switch	Only suitable for CBW and SBW cubicles



Operation handle



—

For more information, please contact

abb.com/mediumvoltage

abb.com/service