

HEAT REJECTION IN DOUBLE CONVERSION OPERATING MODE AT 1.0pF LOAD, NOMINAL VOLTAGE / FREQUENCY, ENERGY STORAGE DISCONNECTED.		100% LOAD	WEIGHT: lbs (kg)	FLOOR LOAD lbs/sq ft (kg/sq m)
300 kW	BTU/hr	31675	2314 (1050)	153 (70)
	kW	9.3		
HEAT REJECTION IN eBOOST OPERATING MODE @ 1.0 pF LOAD, NOMINAL VOLTAGE / FREQUENCY, ENERGY STORAGE DISCONNECTED.		100% LOAD	WEIGHT: lbs (kg)	FLOOR LOAD lbs/sq ft (kg/sq m)
300 kW	BTU/hr	19454	2314 (1050)	153 (70)
	kW	5.7		

1. Dimensions are in inch;
2. UPS Operating Temperature 32° F–104°F
3. 18” minimum clearance required above the unit for heat rejection
4. Front access for service and maintenance
5. Do not tilt the UPS more than 10°

			Draw	Barbarani R.	08.03.21
			Checked	Balbiano C.	08.03.21
ECN		Name	Revision	1	3.12.14



Power Protection  
6572–Quartino, Switzerland

Mechanical Outline

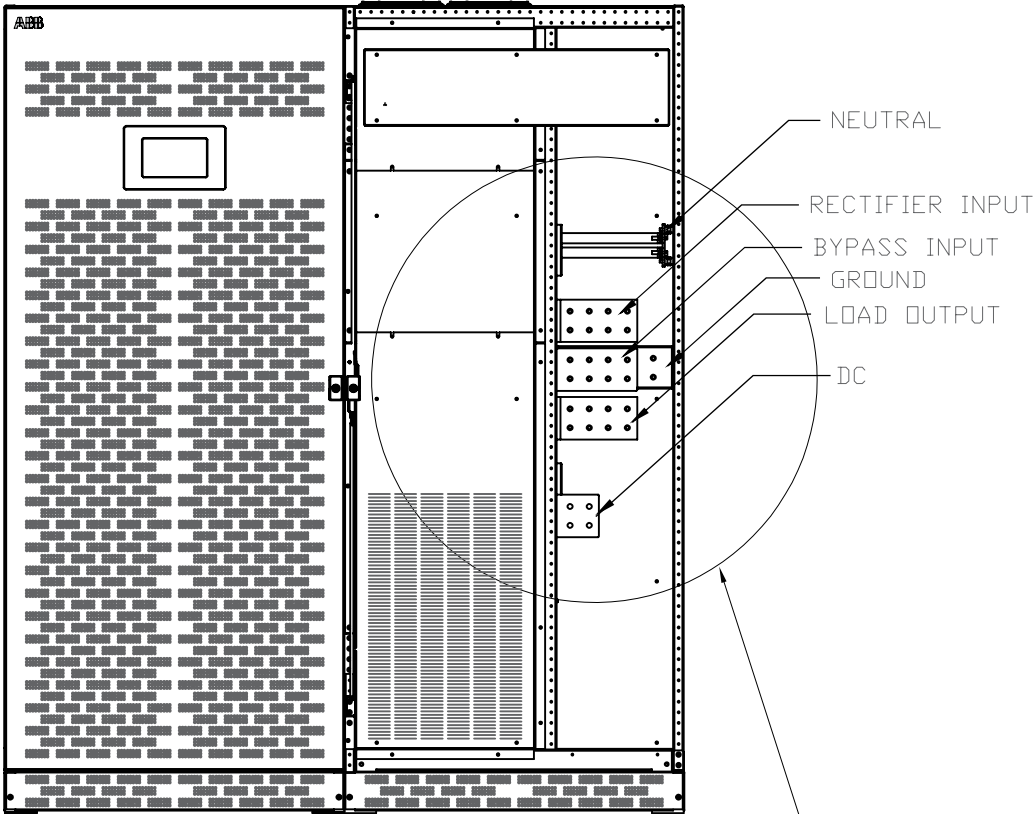
TLE 300 kW UL  
with eBOOST technology

Product Upgrade Letter: A

Series: 2    0001050346

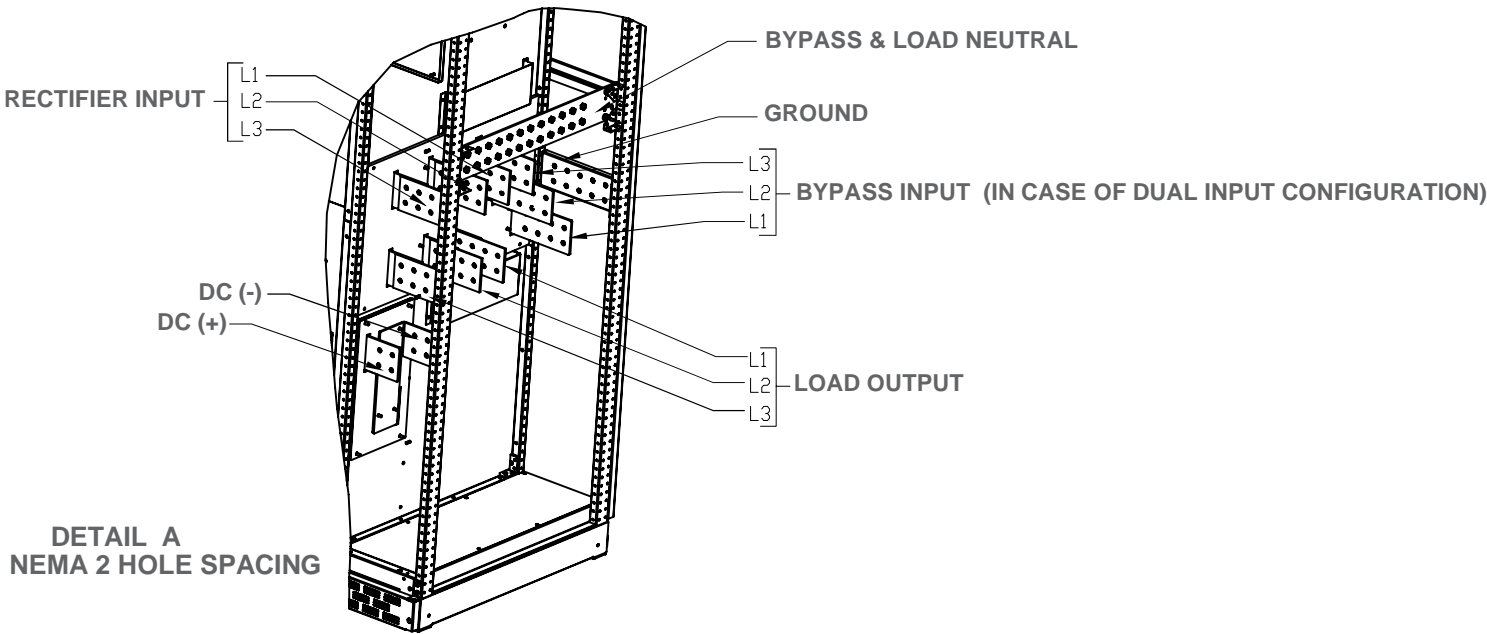
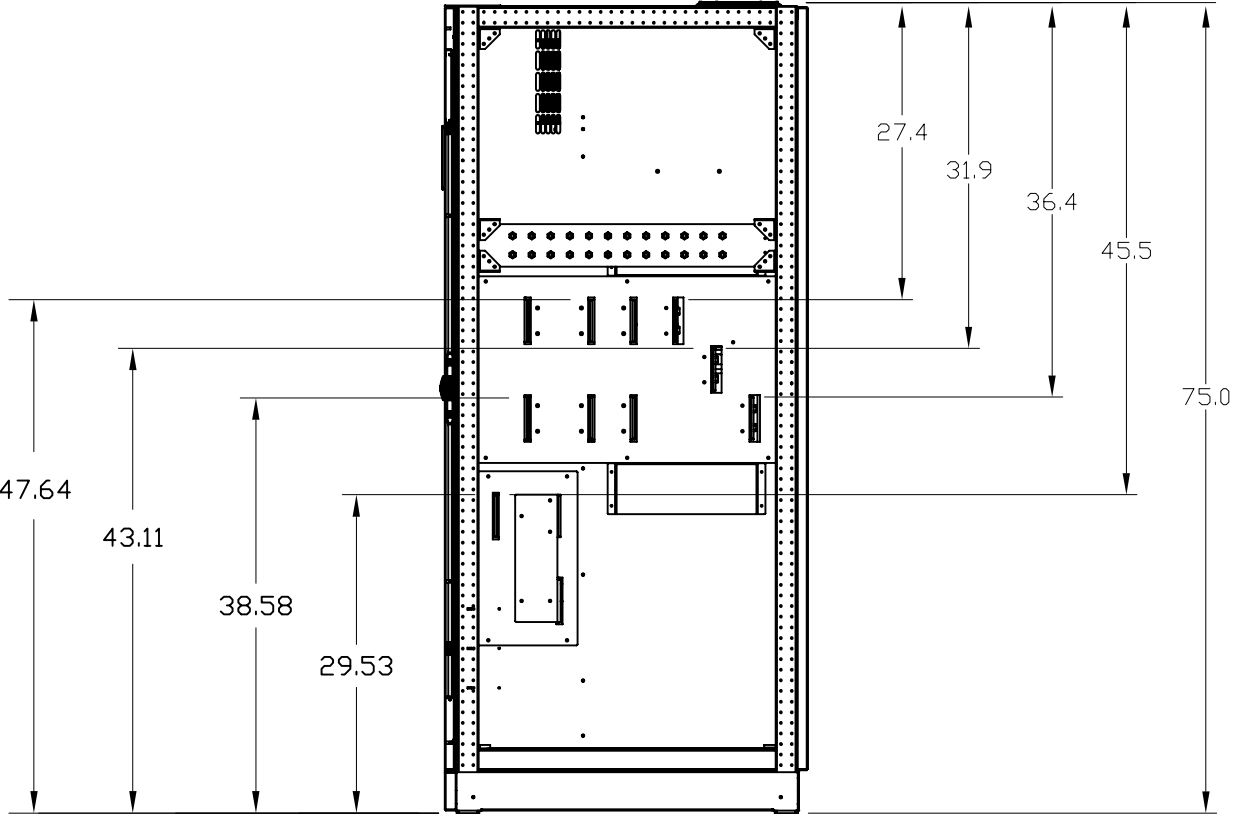
Page 1  
of 2

FRONT VIEW WITH  
SAFETY PANEL REMOVED



DETAIL A

SIDE VIEW WITH  
SAFETY PANEL REMOVED



DETAIL A  
NEMA 2 HOLE SPACING

Maximum Allowed Cable Configuration

kW	Rectifier Input	Bypass Input	DC Input	Output (Load)	GND
300	3 x 300 Kcmil	2 x 400 Kcmil	2 x 500 Kcmil	2 x 400 Kcmil	1 x 1/0 AWG

\* Actual cable size and quantity must be based on the requirements of NFPA 70 and must not exceed the limits listed above.

			Draw	Barbarani R.	25.03.20
			Checked	Balbiano C.	25.03.20
ECN		Name	Revision	1	25.03.20



Power Protection  
6572-Quartino, Switzerland

Mechanical Outline

TLE 300 kW UL  
with eBOOST technology

Product Upgrade Letter: A

Series: 2 0001050346

Page 2  
of 2