

# Quick pole assembly

## Key features and benefits

### Features and benefits

- Sphere-shaped, quick knuckle features round edges, preventing injuries and contaminant build-up on components
- The quick-release mechanism is activated using one hand and one pull pin
- The quick pole assembly blocks at a 90° angle when the pull pin reaches the stopper
- All quick knuckle hardware is made of stainless steel

### Quick pole assembly

- Operates in any kind of weather
- Overall length is 10' (3 m)
- Pole trade size is 1½" threaded NPT
- Aluminum pole trade size is 2" threaded NPT
- Top pole section is 70" (1.78 m) long
- Lower pole section is 50" (1.27 m) long
- Set screws secure top and bottom section into the quick knuckle

### Quick knuckle assembly

- Rotates 180° (90° left and right) around knuckle's center axis, allowing freedom of installation and easy adjustment
- Easy one-man operation – after center bolt is loosened, use the pull pin to lock and unlock the assembly
- Pre-fished with tape to ease wiring

### Brackets

- Universal mounting for 2" to 3" angle iron railings
- Contact your sales representative.



01  
The quick pole assembly blocks at a 90° angle.



Safety first
One-person operation
No ladders or lifts required
Simplified maintenance
Hot dipped galvanized steel and aluminum finishes
Frees up catwalks and walkways during maintenance
Epoxy-coated finishes available
Suitable for 113 mph winds as per AASHTO LTS-4 2001
Maximum fixture weight capacity of 50 lbs.
Steel pole threads are treated and protected to prevent galvanic reaction as per AASHTO LTS-4 2001



### Standard kit

- Overall height of 10' (3 m)
- 1½" NPT threads at both ends (1½" O.D. pipe)
- Rotating quick knuckle assembly
- Installed with two rail angle iron mounting brackets, allowing the pole section to rotate before final positioning

**Q-P-5-10-N** (Galvanized 1½" O.D. pipe)  
**Q-P-A-5-10-N** (Aluminum 2½" O.D. pipe)  
**Standard Kit**

Bracket sold separately



### Retrofit kit

- Overall maximum and predetermined height of 10' (3 m) once assembled
- Can be adapted to existing pole
- Upgrades existing assembly with quick and easy maintenance features
- See instruction sheets provided with product for installation details
- Rotating quick knuckle assembly
- Steel and aluminum adaptor sleeve (2" ID) fits over standard 1½" NPT (1.66" OD) or 1½" NPT (1.90" OD) pipe

**RQ-P-5-10-N** (Galvanized 1½" O.D. pipe)  
**RQ-P-A-5-10-N** (Aluminum 2½" O.D. pipe)  
**Retrofit Kit**

Customer existing pipe (not supplied)

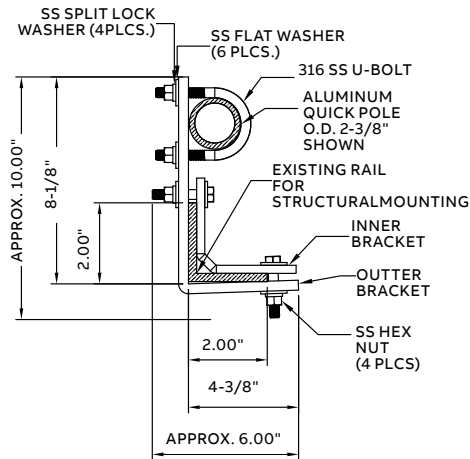
## Quick pole assembly

### Universal bracket kit

#### STAINLESS STEEL (ALUMINIUM POLE)

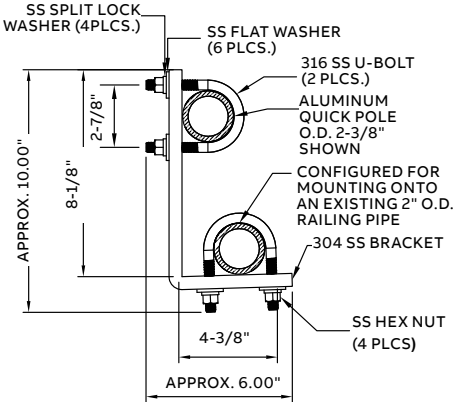
##### AMB-QP-A-BKT-N

Bracket for structural angle mounting



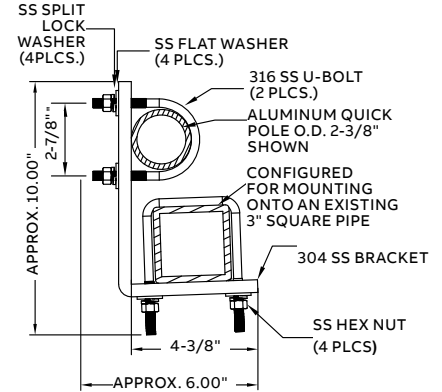
##### RMB-QP-A-BKT-N

Bracket for structural pole mounting



##### RMB-QP-A-BKT-3

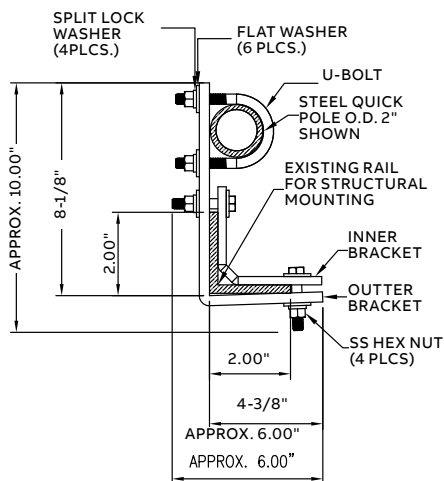
Bracket for structural square mounting



#### GALVANISED STEEL

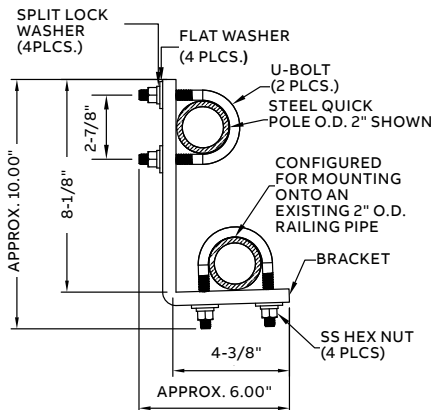
##### AMB-QP-BKT-N

Bracket for structural angle mounting



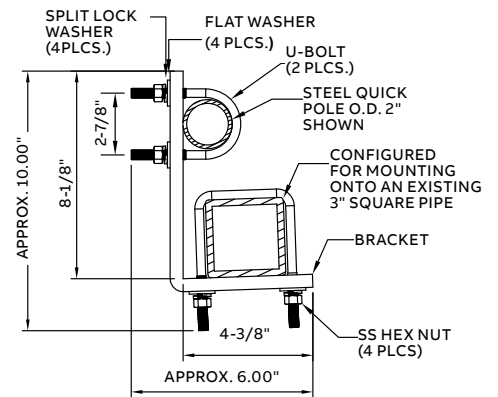
##### RMB-QP-BKT-N

Bracket for structural pole mounting



##### RMB-QP-BKT-3

Bracket for structural square mounting



#### Universal bracket kit

- Quick bolt-on installation, no welding or drilling
- Can be attached to angle iron guardrails up to 3"
- Supplied to be installed on tubular structures 2" O.D. or less but designed for up to 2-3/8" U-Bolt in both positions
- Allows the pole sections to rotate before final positioning

