



# EMERGI-LITE

## Lutia

Versatile lighting solution for safety outdoors

# Lutia emergency lighting

## Versatile lighting solution for safety outdoors

Easy to install, tough and attractive. With its discreet profile and colors, Lutia luminaires merge seamlessly with any building exterior. In emergency and in regular lighting mode, the integrated light sensor allows a night light function. Impact-resistant cases keep water and dust out. Best of all, the versatile design works on ceilings or walls, so one product suits all installation needs.

**Lutia: The simple, reliable way to bring safety outdoors.**







---

01 Wall mounted

---

02 Ceiling mounted

---

One product concept for both  
wall and ceiling mounted



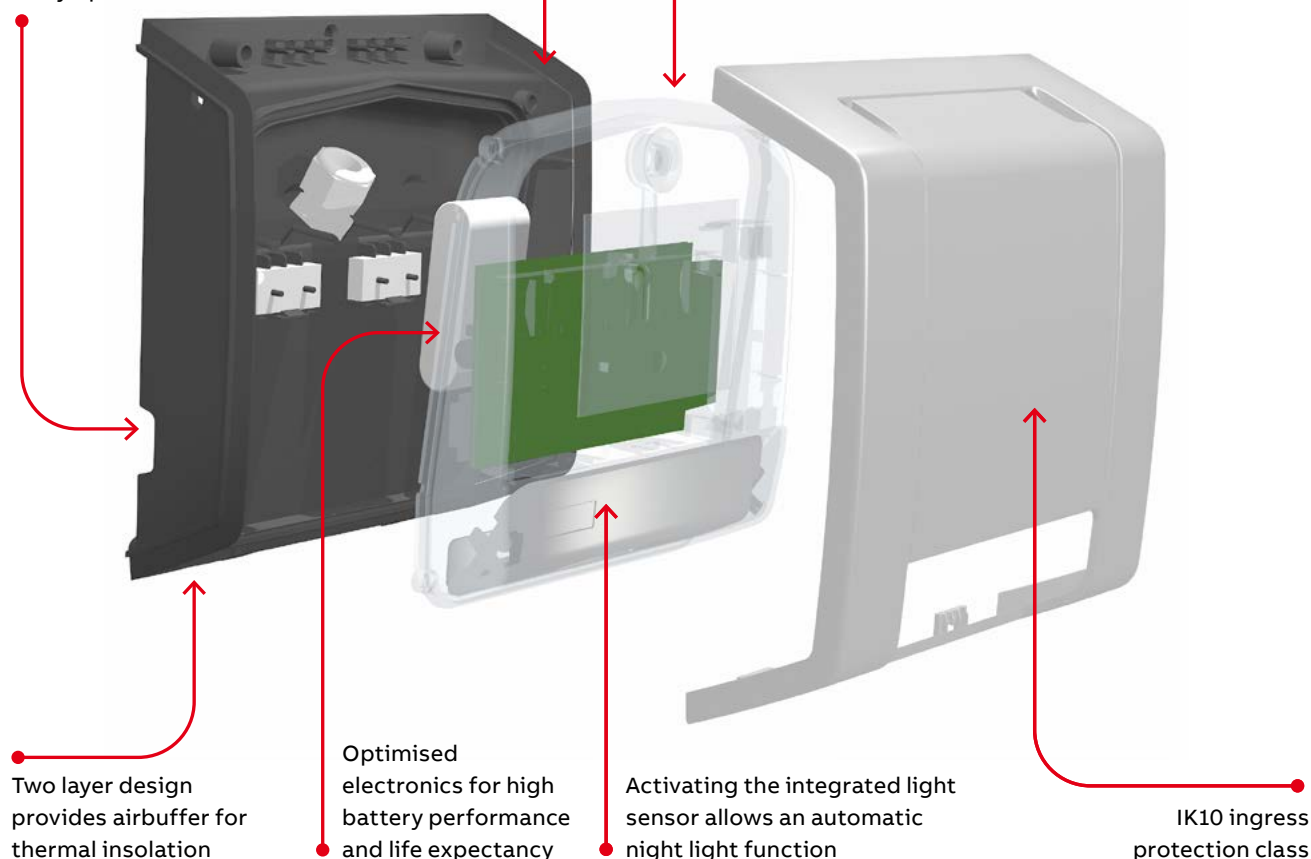
# Lutia emergency lighting

## Your benefits highlighted

Dedicated IP65 compartment

Multiple cable entry options

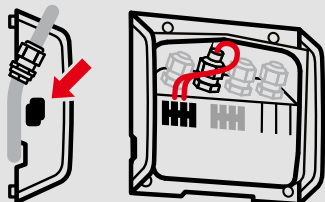
Resistant against wide ambient temperature ranges



### Lutia

#### Easy to install

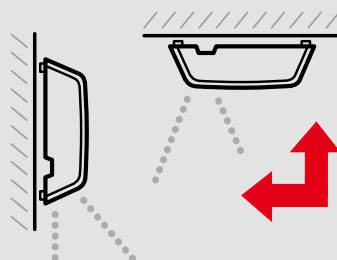
First-fix and loop-in, loop-out systems minimise installation time



### Lutia

#### Optimised logistics

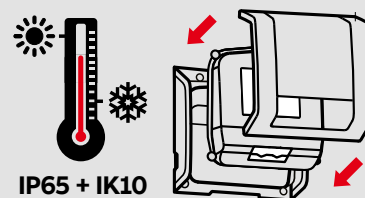
One product concept for both wall and ceiling mounted



### Lutia

#### Reliable in extreme conditions

Robust design developed for outdoor applications



IP65 + IK10

## Lutia

Reliable & Robust



### Ceiling and wall mounted escape route lighting

- **Easy to install**  
First-fix and loop-in, loop-out systems minimise installation time
- **Optimised logistics**  
One product concept for both wall and ceiling mounted
- **Reliable in extreme conditions**  
Robust design developed for outdoor applications



### Luminaire

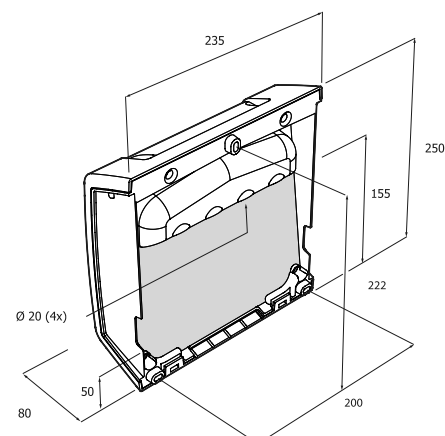
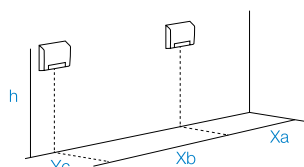
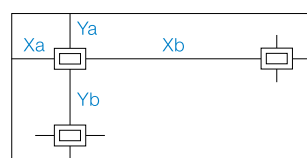
Order code	Description	Input voltage	Lamp type	Lamp output (lm)	Power consumption (VA/W)	Operation / duration (hrs)	Environment temp (°C)	Weight (kg)
STLU3LB1E	Lutia LED ESC M3 ST	230-240 Vac, 50/60 Hz	2 x 0.95W	97	6.1 / 5.5	3	-20 +40	1.6
LU1LB1E	Lutia LED ESC 230V	230-240 Vac, 50/60 Hz		206	5.6 / 5	230V	-40 +40	1.3
LTCLU1LB1E	Lutia LED ESC 230V LTC	230-240 Vac, 50/60 Hz		206	5.6 / 5	230V	-40 +40	1.3
CTLU3LB1E	Lutia LED ESC M3 CT-Naveo	230-240 Vac, 50/60 Hz		97	6.1 / 5.5	3	-20 +40	1.4
DALU3LB1E	Lutia LED ESC M3 DALI	230-240 Vac, 50/60 Hz		97	6.1 / 5.5	3	-20 +40	1.4

### Ceiling mount open area (1 Lux)

h (m)	Y <sub>a</sub>	Y <sub>b</sub>	X <sub>a</sub>	X <sub>b</sub>
<b>Self Contained 3 hrs</b>				
2.0	1.07	3.21	3.82	8.48
2.5	1.01	3.04	4.49	9.94
3.0	1.04	3.00	5.04	11.30
3.5	1.06	2.87	5.50	12.61
4.0	1.06	2.90	5.76	13.79
5.0	0.95	3.02	5.75	15.62
6.0	0.75	2.99	5.21	16.28
<b>Slave</b>				
2.0	1.66	4.55	4.27	9.66
2.5	1.57	4.67	5.01	11.17
3.0	1.56	4.63	5.69	12.62
3.5	1.49	4.45	6.36	14.09
4.0	1.49	4.42	6.97	15.43
5.0	1.54	4.20	7.93	18.12
6.0	1.55	4.26	8.41	20.44
7.0	1.44	4.37	8.35	22.31

### Wall mount open area (1 Lux, Y<sub>c</sub> = 1m)

h (m)	X <sub>a</sub>	X <sub>b</sub>
<b>Self Contained 3 hrs</b>		
2.0	3.50	7.80
2.5	4.10	9.40
3.0	4.60	10.00
3.5	5.00	12.00
4.0	5.20	12.80
5.0	5.30	14.20
6.0	4.60	14.40
<b>Slave</b>		
2.0	4.00	8.80
2.5	4.70	10.40
3.0	5.40	12.00
3.5	5.90	13.40
4.0	6.50	14.60
5.0	7.20	17.00
6.0	7.40	19.00
7.0	7.40	20.20



## Lutia escape route lighting

Installation in focus



**Surface mounted wall**  
Watch the video



**Surface mounted ceiling**  
Watch the video



**Surface mounted wall – replacement battery**  
Watch the video





# Developed for outdoor applications



## Legend code



BSI Kitemark approved



Tested and certified by an independent European certification agency



Luminaire may be attached to a flammable surface



Self-Test product



Product comes with an LED light source



Self-contained: in case of power failure, the luminaire is battery powered



Maintained / non maintained luminaire



DALI compatible product



Surface mounted luminaire



Indicates ingress protection class (IP value)



Classification for the degree of protection provided by enclosures against external mechanical impacts



Operates in extreme low temperatures



3 hours autonomy  
(battery-powered light operating time)



Insulation class II. This luminaire must not be earthed



24 hours recharge period

## GID Code reference

Order code	GID Code	Page No.
STLU3LB1E	7TCA091160R0597	5
LU1LB1E	7TCA091130R0582	5
LTCLU1LB1E	7TCA091140R0556	5
CTLU3LB1E	7TCA305020R0003	5
DALU3LB1E	7TCA305020R0062	5



---

**ABB UK Ltd.**

Tower Court  
Foleshill Enterprise Park  
Courtaulds Way  
Coventry CV6 5NX  
Tel: +44 (0)333 999 9900  
E-Mail: [LV.Enquiries@gb.abb.com](mailto:LV.Enquiries@gb.abb.com)  
Technical Support  
E-Mail: [global-eml-technical@abb.com](mailto:global-eml-technical@abb.com)

**[www.emergi-lite.co.uk](http://www.emergi-lite.co.uk)**

