

## Release Notes

### RobotWare Add-in Packaging Tool

Version 1.9

Revision: -1.9.33.0

The information in this manual is subject to change without notice and should not be construed as a commitment by ABB. ABB assumes no responsibility for any errors that may appear in this manual.

Except as may be expressly stated anywhere in this manual, nothing herein shall be construed as any kind of guarantee or warranty by ABB for losses, damages to persons or property, fitness for a specific purpose or the like.

In no event shall ABB be liable for incidental or consequential damages arising from use of this manual and products described herein.

This manual and parts thereof must not be reproduced or copied without ABB's written permission, and contents thereof must not be imparted to a third party nor be used for any unauthorized purpose. Contravention will be prosecuted.

Additional copies of this document may be obtained from ABB at its then current charge.

© Copyright 2018 ABB All rights reserved.

ABB AB

Robotics Products

Se-721 68 Västerås

Sweden

## **Table of Contents**

---

<b>1 Introduction</b>	<b>4</b>
<b>2 Release Information</b>	<b>5</b>
<b>3 Add-in Packaging Tool product description:</b>	<b>7</b>
<b>4 PDDs and other resolved issues</b>	<b>8</b>
<b>5 Known Limitations</b>	<b>9</b>
<b>6 Installation information</b>	<b>10</b>
<b>7 Technical support</b>	<b>11</b>

# 1 Introduction

The purpose of this document is to explain, the release information, HW/SW requirements, installation steps, resolved issues, and known limitations in this release of RobotWare Add-in Packaging Tool.

## 1.1 Definitions, Acronyms and Abbreviations:

Definition/Abbreviations	Explanation/Description
RS 6.07	Robot Studio 6.07
RW 6.07	RobotWare 6.07
APT	Add-in Packaging Tool
IM	Installation Manager

## 2 Release Information

### 2.1 Target Audience

The Add-in Packaging Tool is targeted for creators of RobotWare Add-in, developers and testers for the RobotWare Add-In Packaging Tool.

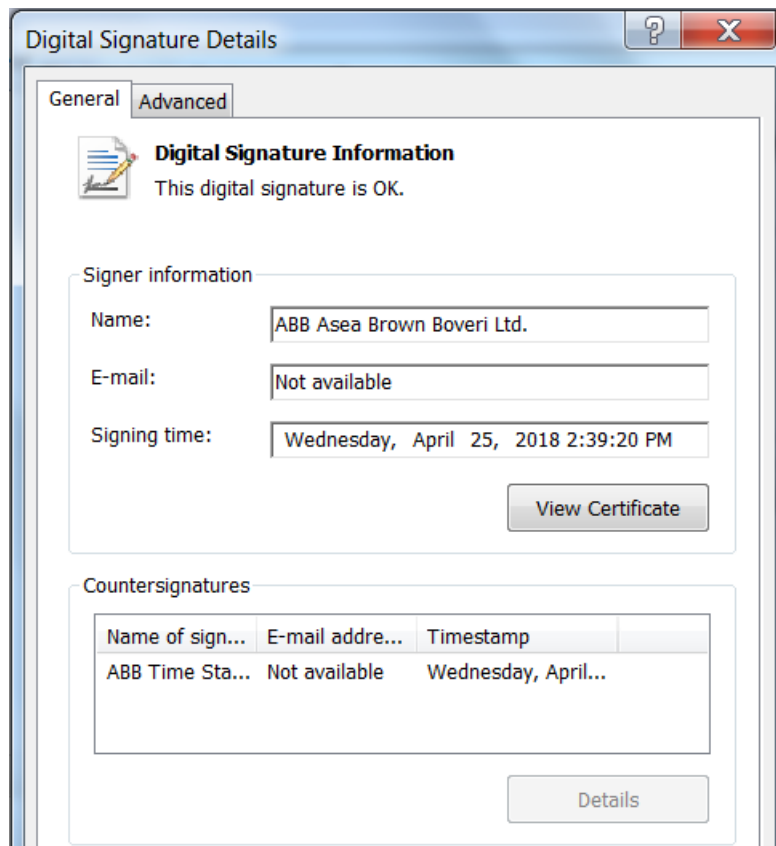
### 2.2 Release Name

The release name is RobotWare Add-in Packaging Tool 1.9 and the build number is 1.9.33.0

This tool is used for generating RobotWare Add-ins for RobotWare 6.xx releases.

### 2.3 Digital Signatures

APT 1.9 Package is digitally signed to avoid any manipulation, the digital signature information is shown below:



### 2.4 Release Date

The release date is 27<sup>th</sup> April, 2018.

### 2.5 Language Support

Add-in Packaging Tool is available in English language.

### 2.6 Documentation

User documentation for Add-in Packaging Tool is available under the *About* menu with menu-item *Documentation*.

The Documentation is available in CHM format. User can search the topic of interest in the CHM document.

## **2.7 System recommendations**

### **2.7.1 Recommended Software**

#### **Operating System**

Microsoft Windows 7 SP1	32-bit edition
Microsoft Windows 7 SP1 (recommended)	64-bit edition
Microsoft Windows 10 (recommended)	64-bit edition

### **2.7.2 Recommended Hardware**

CPU	2.0 GHz or faster processor, multi-core processor recommended
Memory	3 GB on Windows 32-bit edition, 8 GB on Windows 64-bit edition (recommended)
Free disk space	10+ GB free Hard drive space recommended
Screen resolution	1920 x 1080 pixels or higher is recommended
Mouse	Three-button mouse

## 3 Add-in Packaging Tool product description:

### 3.1 New Functionality/Features introduced in APT 1.9

- Included in this release is the console version of the APT. The console version of APT is used to generate the add-in using command line instructions.

### 3.2 Included in this Release:

- Create new APT project (Empty Project) to build a new RW Add-in for RW 6.xx from the scratch.
  - Define new project details.
  - Define product dependencies.
  - Define options for the new RW Add-ins
  - Define Categories & groups, this simulates the display of options in the Categories and Groups in the Installation Manager.
  - Define dependencies among options for the RW Add-in.
  - Define conflicts among options for RW Add-in.
  - Add source files to the project.
  - Perform signing of certificates with publisher and licensing certificates with the timestamping server.
- Create an APT project from existing folder hierarchy to build RW Add-in for RW 6.xx for existing Additional Options.
- Open an existing APT project to edit project details, add new files and build a new version of a RW Add-in.
- Save: for saving the project on a File System or a Network Location.
- SaveAs: This option allows the user to make a copy of project and save the project in alternate location provided by the user.
- Build: allows Add-in project to compile and generate RMF and RPK files that is the primary output of APT. It also generates the virtual license files when the signing and timestamping of the project done.
- Open Output folder: this option allows to directly open the folder where the output RMF/RPK files are generated.
- Documentation: user documentation for APT can be accessed via menu:  
About->Documentation
- Information about the APT Software can be obtained from the about dialog box:  
About-> ABB RobotWare Add-In Packaging Tool.
- Signing with certificates for Publisher and Licensing along with a given Timestamp server can be done by navigating to Signing Certificates tab and providing the required entries.

## **4 PDDs and other resolved issues**

This section describes the issues resolved in APT 1.9 release.

### **4.1 PDDs resolved in release 1.9 of APT**

This is a new version Add-in Packaging Tool has following PDDs' fixes:

- **ExtValPDD10107**

### **4.2 Below internally reported issues are also resolved in this released:**

- Rename of the feature Id is supported in the Categories/Dependencies/Conflicts tab.
- Space character in the product name will be no longer supported.
- Issues related to the SaveAs to new location.



## 5 Known Limitations

This section describes the known limitations in APT 1.9.

### 5.1 Handling of Files and Folder:

- All the source files under files and folder tab are added by reference to the original files and are not physically copied to the project folder.

## 6 Installation information

Installing APT 1.9 on a Windows PC

### 6.1 Installation Instructions

Step	Action
------	--------

- |   |                                                                                                                                                                    |
|---|--------------------------------------------------------------------------------------------------------------------------------------------------------------------|
| 1 | Open the webpage <a href="http://new.abb.com/products/robotics/robotstudio/downloads">http://new.abb.com/products/robotics/robotstudio/downloads</a> in a browser. |
| 2 | Locate the “Download Add-In Packaging Tool 1.9” on the webpage and click the link to download the APT 1.9 installable.                                             |
| 3 | Extract the downloaded “RobotWare Add-In Packaging Tool 1.9.zip” file to desired folder on computer.                                                               |
| 4 | Open the folder and locate setup.exe and double click it to run the setup program.                                                                                 |
| 5 | Go through the installation wizard and finish the installation.                                                                                                    |

Add-in Packaging Tool should be installed under the ‘\Robotics IT\’ folder present at the same level as the Base application i.e. RobotStudio 6.xx.

The default installation path for the APT 1.9 on a 64-bit operating system is  
“%Program Files(x86)%\ABBIndustrial IT\Robotics IT\”.

## **7 Technical support**

### **7.1 Overview**

#### **7.1.1 Contacting ABB**

If you have any questions or issues with APT 1.9 installation, please approach the local ABB Robotics Service representative.

#### **7.1.2 Following points help us solve your problem better:**

1. Explain the problem in the software, also provide details about how the problem can be recreated.
2. Take the screenshots when the problem appeared; if applicable. (Use ALT + PRINT SCREEN to get an image of the active window instead of the entire screen.)
3. Running the latest version of Robot Studio and Add-In Packaging Tool ensures that it works properly and includes improvements and new product functionality. ABB recommends that you update to the latest version of Robot Studio and Add-in Packaging Tool whenever a new version is available and before contacting ABB for support.