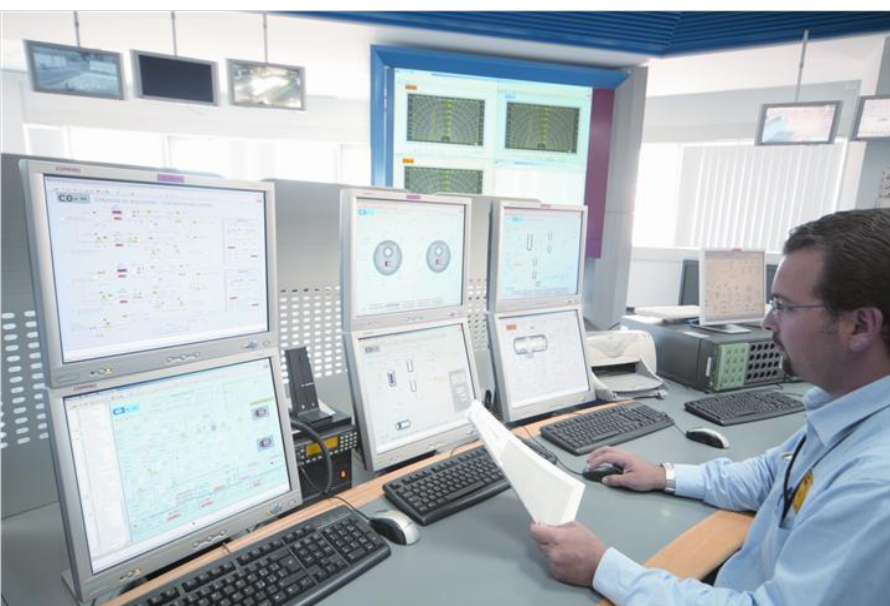


COURSE DESCRIPTION

INTCV569

Asset Performance Management (APM)



The goal

The goal of the course is to improve the ability of Personnel from Power Utilities, Power Generation, transmission companies & industries and Consultants responsible for maintenance and asset planning to use the asset management tool to move from periodic maintenance to an efficient condition based maintenance.

Learning objectives

Upon completion of this course, participants will be able to:

- Understand the application of APM.
- Appreciate the input data either online or offline required to have an effective condition and predictive analysis.
- Understand the interpretation of the outputs and reports of the tool.
- To be able to reduce the breakdown/periodic maintenance

Participant profile

The Personnel from power utilities, power generation, transmission companies and industries and consultants responsible for maintenance and asset planning.

Prerequisites

Degree or diploma in engineering, basic knowledge of power system and behavior of various assets in the system.

Topics

- Introduction to Asset Performance Management (APM)
- Transformer from APM perspective
- Circuit Breaker from APM perspective
- Capacitor Bank from APM perspective
- Data input required for various assets
- Configuration parameters for asset management

- Different assets and their key performance characteristics
- Interpretation of results
- Implementation examples

Course type

This is an instructor led seminar. The language of the course is English.

Laptop or tablet is required to have access to the e-documentation. Please bring your own device.

Duration

The duration of the course is two days.

Safety

Participants must wear safety toe shoes or boots while entering the labs.

To Register:

LMS:-[MyLearning](#)

Sign In: check [IE browser setting](#) Click SIGN IN to Sign-up or Log-in with your ABB account.

Search: please enter course number INTCV569 into the search field. (Please check the language filter EN)

The latest version of the course portfolio, and course schedule can be found on our

ABB PowerTEC Webpage :

<http://new.abb.com/service/abb-university/india>

or

scan the below QR Code :

