



ABB Condition Monitoring Solutions

Vernon Smith – Turbine Account Manager

ABB Condition Monitoring

Today's Purpose

Goal

- Implement an Integrated Monitoring System for Rotating Machinery



ABB Condition Monitoring

Agenda

Topics of Discussion

- System Overview
- 800xA Integration
- MCM800
- WiMon Sensors
- Analyst Software
- Applications
- Fault Diagnosis



ABB Condition Monitoring

Benefits of Upgrade

Why ABB?

- Integration with 800xA
- Evolution Without Obsolescence
- Flexibility
- Avoid Temporary Walkaround Data Capture
- Continuous Improvement



800xA System Overview

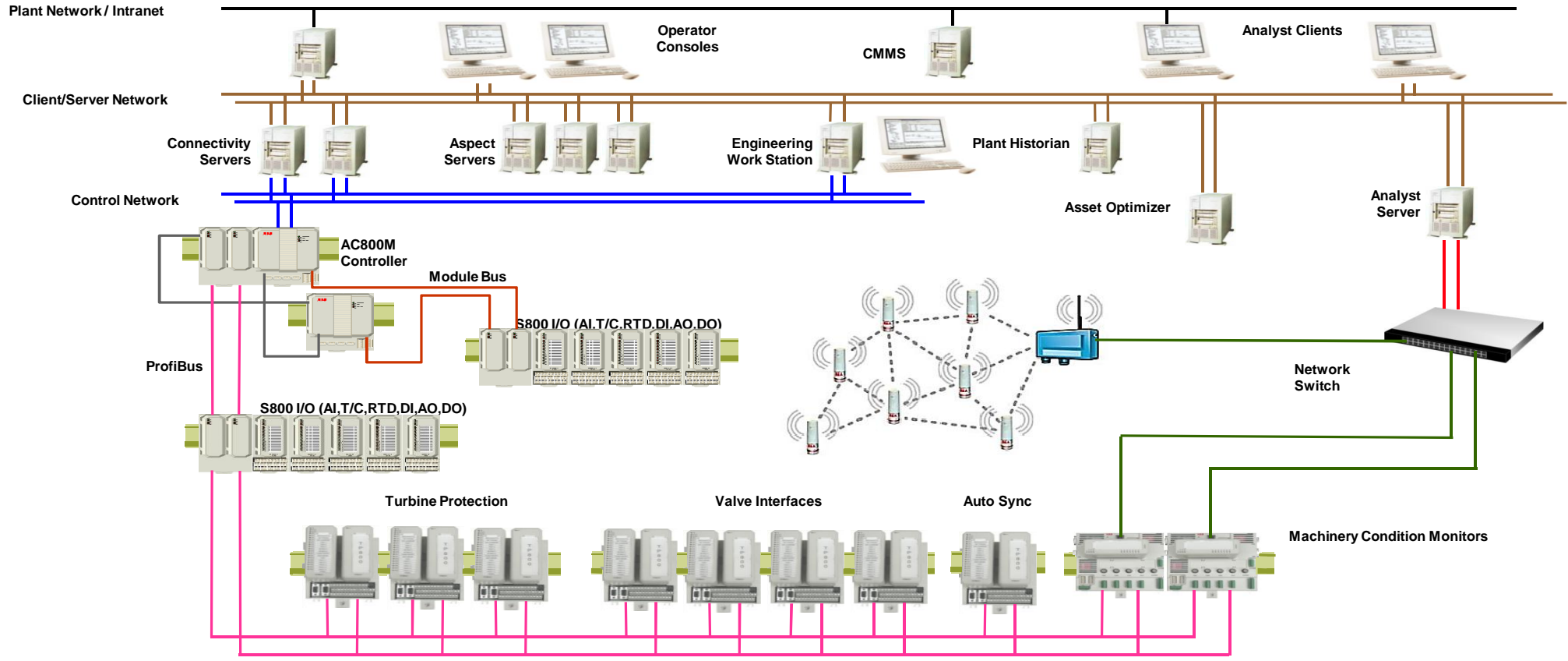


ABB Condition Monitoring 800xA Integration

Features

- Custom Built MCM Library
- Hardware Definition Files for CI854 Communication
- Waveform Triggers

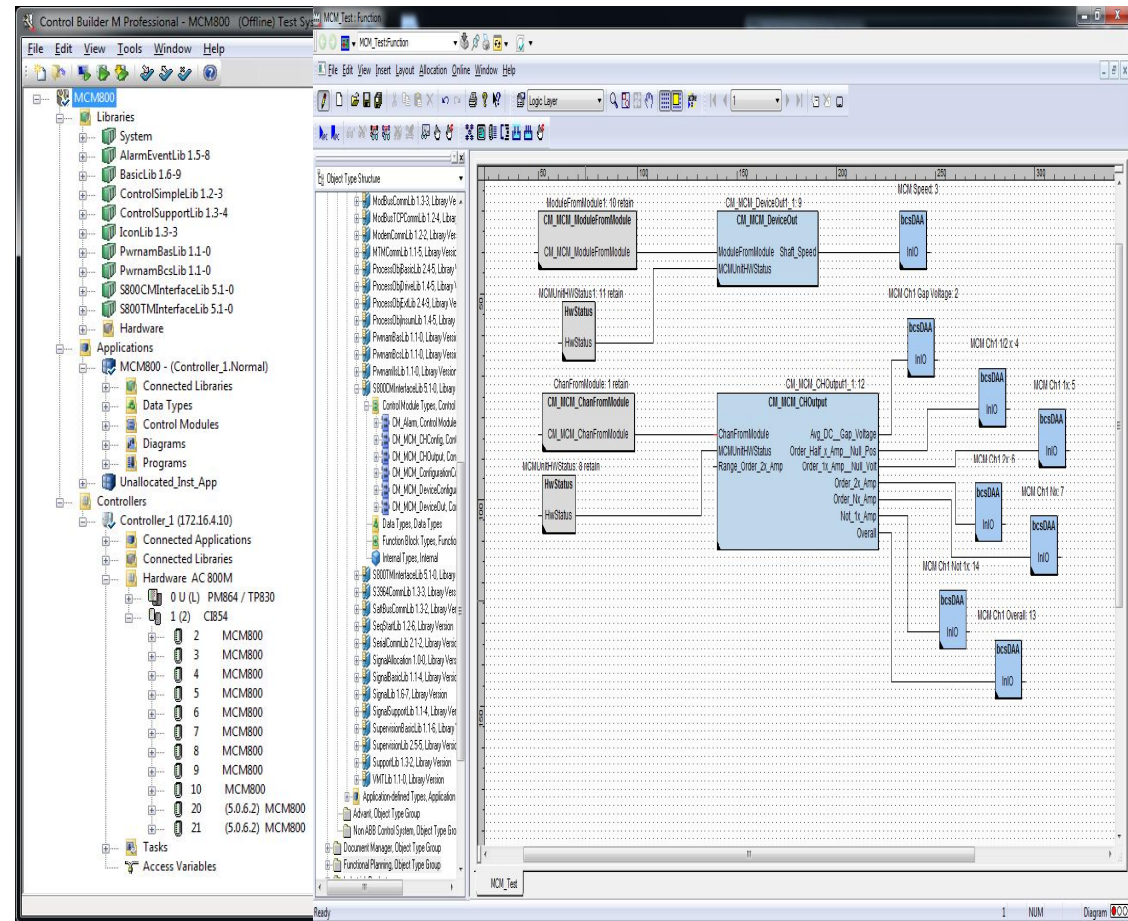


ABB Condition Monitoring MCM800

Features and Benefits

- Universal All in One Module
- 4 Sensor Inputs
- Waveform Collection for High Level Diagnostics
- Various Communication Methods
- Standalone Capability

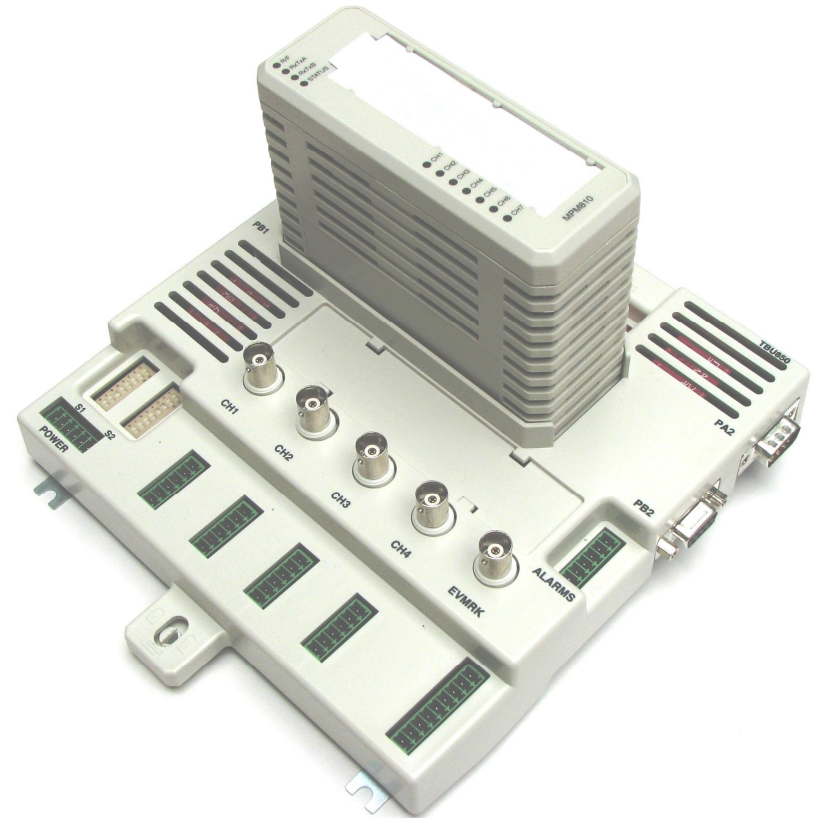


ABB Condition Monitoring

WiMon 100 Sensor

Features and Benefits

- 5 Year Battery Life
- Dual Vibration and Temperature
- Mesh Wireless Network
- Reduced Installation Costs
- Different Mounting Options
- Enables Monitoring in Hazardous Areas (IP66 Compliant)

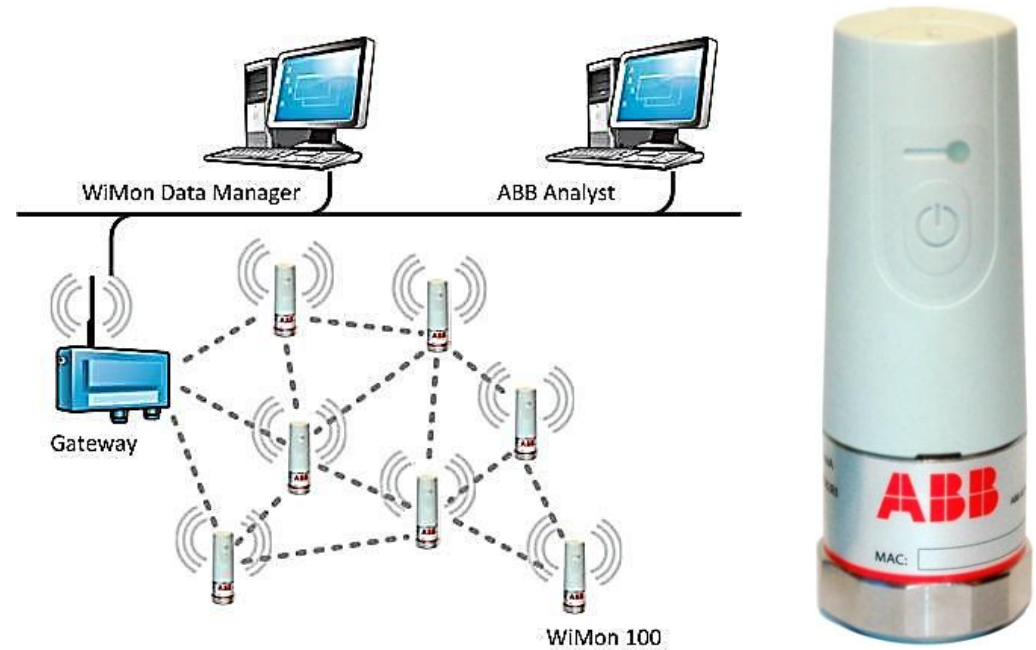
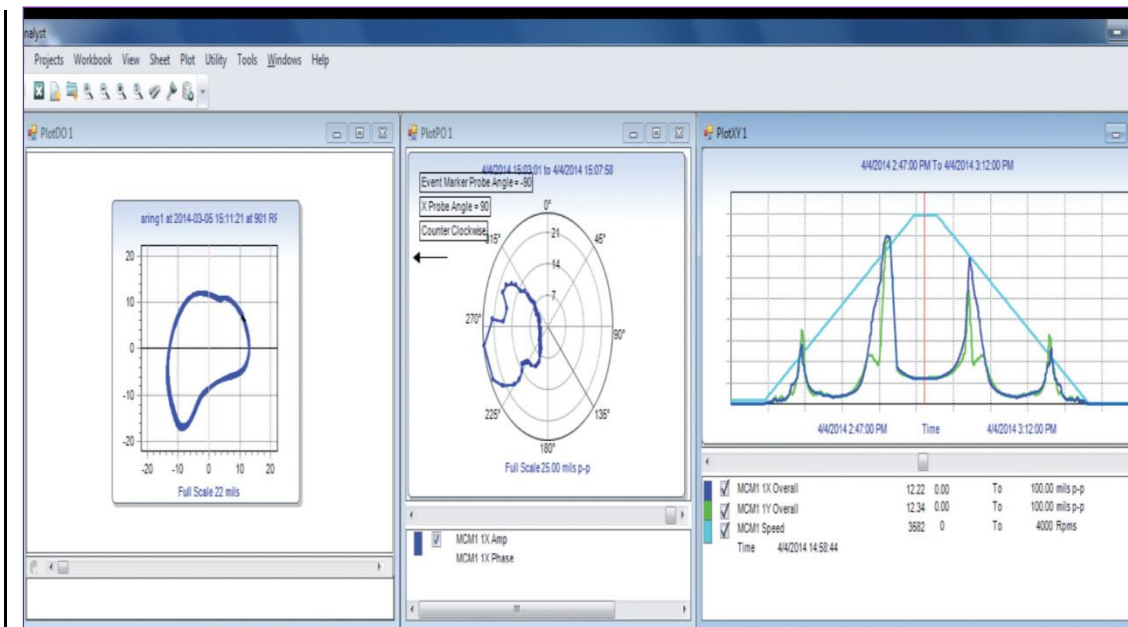


ABB Condition Monitoring

Analyst Software

Features and Benefits

- Graphical Interface for Predictive Maintenance
- 16 Different Plot Types
- Compare Present to Past
- Online Configuration of MCM Parameters
- Standalone Capability



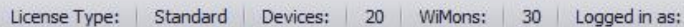
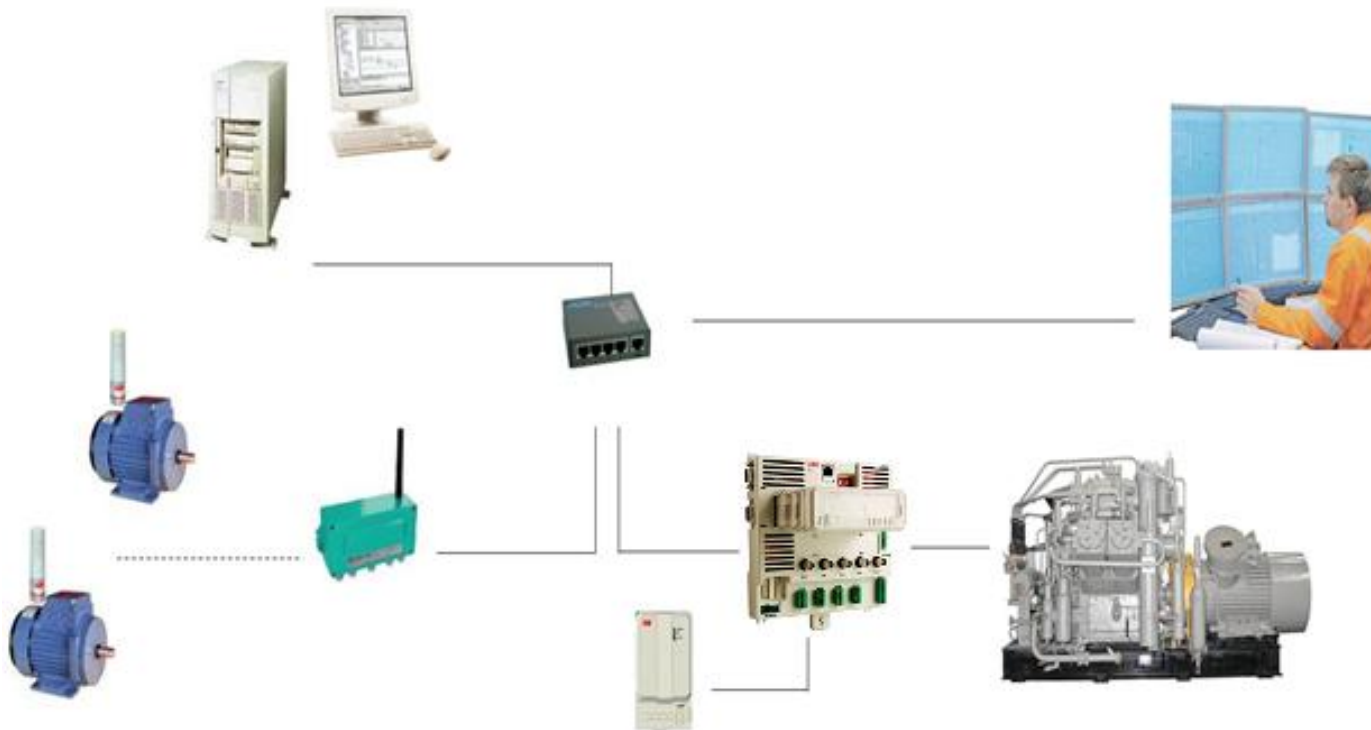


ABB Condition Monitoring

Fault Diagnosis Demo





Vernon Smith
Account Manager
IAPG – Turbine Automation
201B Ann Street, Oakmont, PA 15139
Phone: +1 724 351 2359
Email: vernon.smith@us.abb.com

