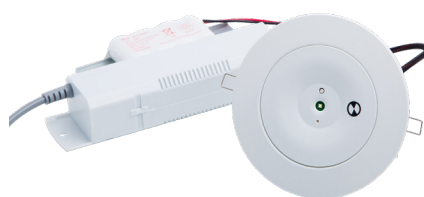


TECHNICAL DATA SHEET

Stanilite®

Economy Spitfire® LED recessed non-maintained

e-Range



Range

Economy range

Product group

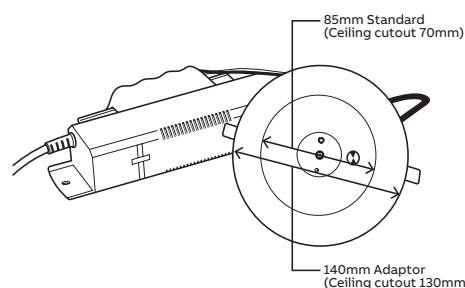
Spitfire LED



Features

- 1 year warranty
- D40 photometric classification
- LED technology 75,000 hours lamp life
- Low power consumption
- High temperature NiCad batteries
- Spring fixing design allows for different ceiling thickness (1mm - 20mm)
- White adaptor included to convert standard 85mm lamp head to 140mm diameter

Catalogue no.	Description
Standard products	
ESFLED	Economy Spitfire LED recessed
Spare parts	
03-01222	Battery 4 cell NiCad 4.8V 1.8Ah



Dimensions		
	Lamp head	Ceiling cutout
	85mm standard	70mm
	140mm adaptor	130mm
Weight		
	Model	Weight
	Standard	1.0kg
Construction		
	Part	Construction
	Lamp head	White polycarbonate

Light source			
	Model	Light source	
	Standard	2W	
Power consumption			
	Model	Power consumption	
	Standard	2.0W average / 3.6W maximum	
Note: Preliminary results			
Photometrics			
	Model	Class	Classification
	Standard	C0	D40
		C90	D40
Note: Preliminary results			

Note:

- Designed to comply with AS2293 and meet relevant Australian EMC standards