

Business Ethics

ABB adheres to strict ethical rules and has set up its own Code of Conduct to support business ethics. If anyone suspects that something may not be in compliance with the Code, he/she may report it using ABB's Business Ethics Hotline.

All ABB production plants
are **ISO 14001**
certified



Health & Safety

ABB is committed to providing a safe and healthy work environment in every location it operates. Since 2004, ABB has run a unified occupational health & safety management system conforming to OHSAS 18001.

Students can enroll
their projects in the



ABB University Award

Supporting local communities

Our corporate donations focus on integration. In the long term, we have been supporting the social integration of children and adults with physical or mental handicaps. We help our non-profit partners not only financially, but also through sharing the expert skills and time of our employees, or by buying their products and services. Our long-term partners include the Centre of Handicapped Skiers and the Home for Me (Domov pro mne) association.

For more information, please contact:

ABB s.r.o.

Štětkova 1638/18
140 00, Praha 4, CZ
Phone: +420 234 322 110
facebook.com/ABBCzech
youtube.com/ABBCzech

www.abb.cz

Contact Center 800 312 222
kontakt@cz.abb.com

ABB Hotline
for external partners:

+41 43 317 33 67



ABB Czech Republic's environmental protection policy

At ABB, we constantly strive to increase the efficiency of our operations, including the use of our own products. All six of ABB CZ's production plants are ISO 14001 certified.

Working safely
in compliance with
OHSAS 18001



Active support to technology and innovation

As our business is based on state-of-the-art technologies, we take an active part in popularizing science and technology, supporting innovation and seeking technical talent among students of primary and secondary schools, as well as colleges and universities. Our goal is to contribute to an increased attractiveness of technical branches of study and professional fields. We have our own student competition, the "ABB University Award", and we support projects such as Science has Future, the unique Lower Vítkovice project or Techmania Science Center, a popular technical education program.

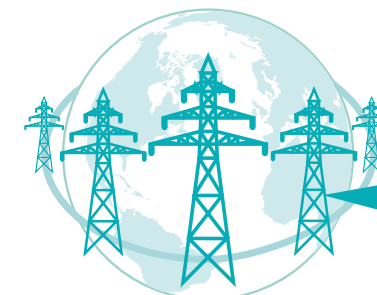
Our employees also help our **non-profit** partners at **9** corporate volunteering events a year.



ABB Czech Republic State-of-the-art technology for power and automation

Our mission

ABB is a global leader in power and automation technologies that enable utility and industry customers to improve their performance while lowering the environmental impact. Almost 60 percent of ABB Group's revenues are related to energy-efficient products or services that help customers save energy, therefore reducing costs and greenhouse gas emissions.



Almost **60%**
of revenues come from
energy-efficient products
or services

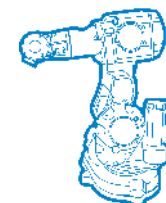
Areas of our business in **5** divisions



Power
Products



Power
Systems



Discrete Automation
and Motion

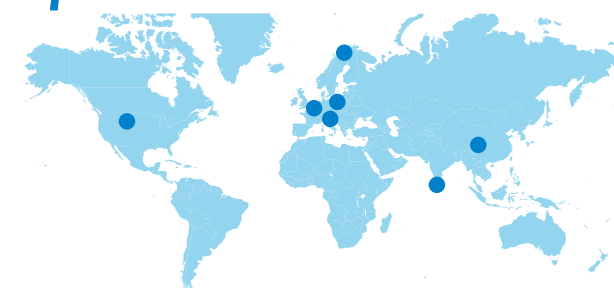


Low Voltage
Products



Process
Automation

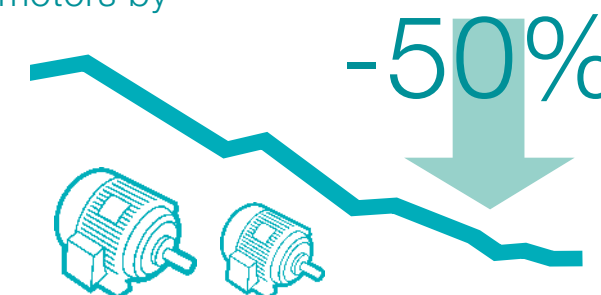
7 global ABB R&D centers worldwide



What our products can do

- Drives can cut the power consumption of motors by 50 percent
- Transmission systems deliver electricity efficiently over thousands of kilometers
- Intelligent building installation systems lower power consumption in homes and offices
- Robots help people or perform tasks which are dangerous for humans in all fields of industry
- Control systems ensure busy urban rail systems run safely and on time
- Systems manage lighting for the world's biggest sports and cultural events

ABB drives reduce power consumption
of motors by



Power and productivity
for a better world™



Power and productivity
for a better world™



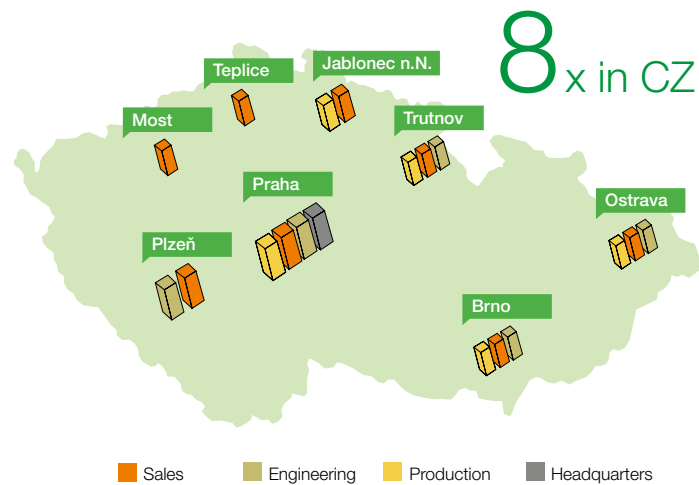


ABB tradition in the Czech Republic

ABB products and services have been present in the Czech Republic since 1970, but ABB Czech Republic was formally set up in 1992. In the 1990s, the group of ABB companies in the Czech Republic grew and new companies were added to form today's ABB s.r.o. ABB currently operates in 8 locations, with the most important engineering and R&D centers being in Prague, Brno, Ostrava, Trutnov and Jablonec. In 2008, the Czech Republic was appointed the leading country of the cluster, which also includes Hungary, Slovakia and Ukraine.

Investments in the Czech Republic

Over the past 10 year alone, ABB has invested almost CZK 3,5 billion into the modernization of production plants as well as into new technology. A substantial part of ABB CZ's financial resources goes to the development of research and engineering centers and the education of employees at all levels.

After investing almost CZK 400 million into production facilities and new technology in 2013, ABB CZ's investment volume continues growing substantially in 2014.

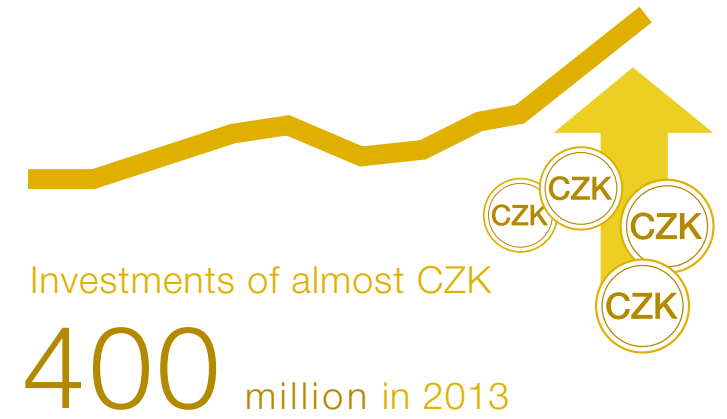
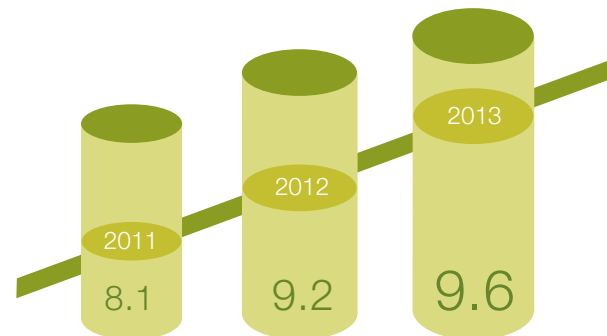
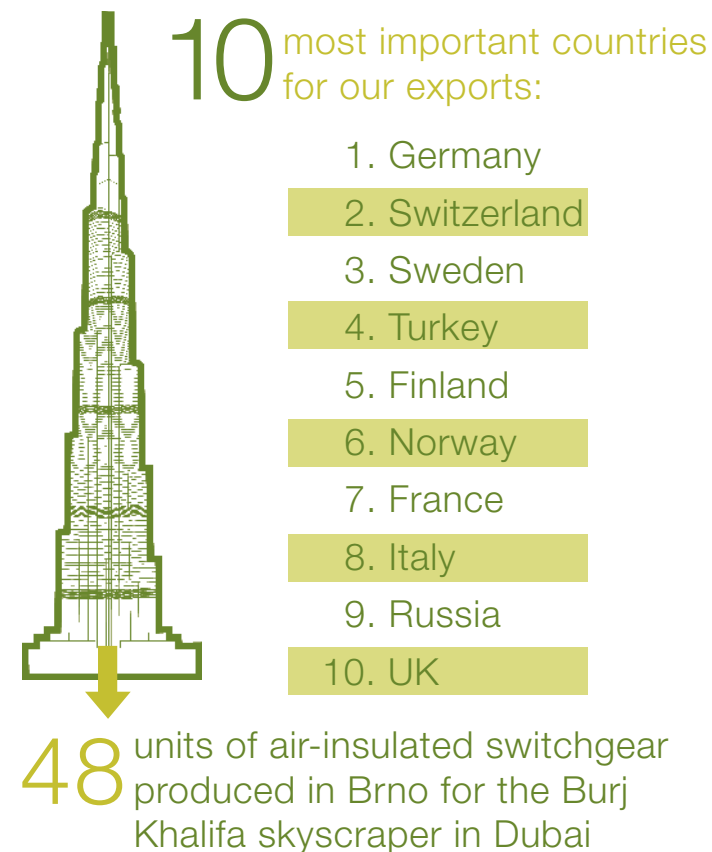


ABB CZ's production and exports

ABB has six production plants in the Czech Republic. Exports account for about 75 percent of production, which testifies to the high-quality of ABB CZ's products. For instance, the Brno production plant for medium-voltage air insulated switchgears, transformers and sensors is the world's biggest production plant. One of the many deliveries worldwide is for an example delivery of 48 units of medium-voltage air insulated switchgears including medium-voltage instrument transformers for the Burj Khalifa, the world's tallest building (829 m) in Dubai, UAE.



Exports from the Czech Republic in CZK billion



Investments in 2014

The biggest investment is currently being implemented at our Brno plants and will particularly involve the construction of a new 12,000 sq.-metre hall for switchgear manufacturing, to be equipped with completely new technology, and the extension of the existing production facility for instrument transformers. The extension of the transformer manufacturing facility and the construction of the new hall are at full swing now, with both projects scheduled for completion in the second half of 2014.

Along with the Brno project, the construction of a new ABB manufacturing plant for substation automation systems is under way in Trutnov. The new manufacturing plant in Trutnov should be put into operation by the end of 2014. The construction of the new plant will double ABB's manufacturing capacity in the location.

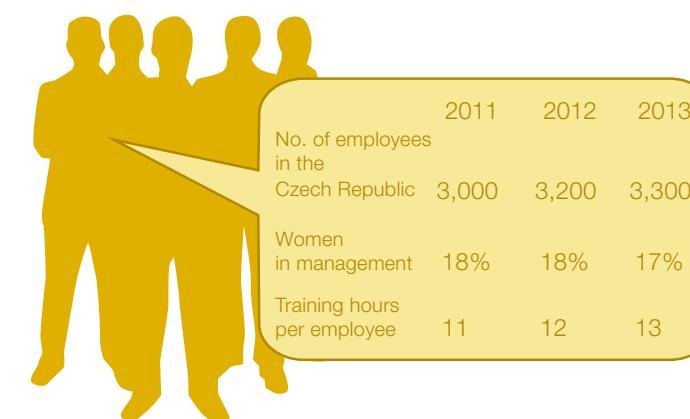
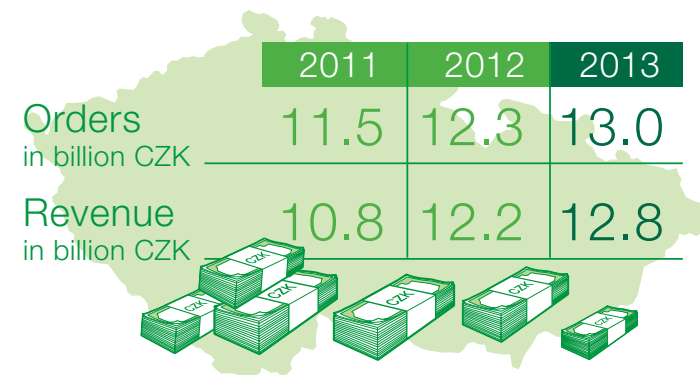
In addition, the engineering centre in Ostrava will move to a new location in the city centre this year, which will also require some investment. And last but not least, there is the continuous investment into our R&D centres and employee training programs.



Financial results of ABB Czech Republic

The company has confirmed the major role it plays on the domestic market with its revenue, which reached almost CZK 13 billion in 2013. Our major customers include the following: Alpiq Generation (CZ), ČEPS, ČEZ Group, E.ON, PREdistribuce, Dalkia, Unipetrol RPA, Bohemia Müller, ČKD Group, Doosan Škoda Power, EGEM, I & C Energo, K & V ELEKTRO, Vítkovice Group, ELEXIM, ELKOV elektro, EL-FETEX, Elektrizace železnic Praha, INELSEV, and Benteler Maschinenbau CZ.

Revenue almost CZK **13** billion



Human resources

We want to attract and engage talented and proactive employees who desire to learn new things and want to gain experience in an attractive international environment. We have realized that diverse and talented employees are the main competitive advantage of any company. Education and training programs for our employees therefore focus on developing our human, professional and managerial potential.