

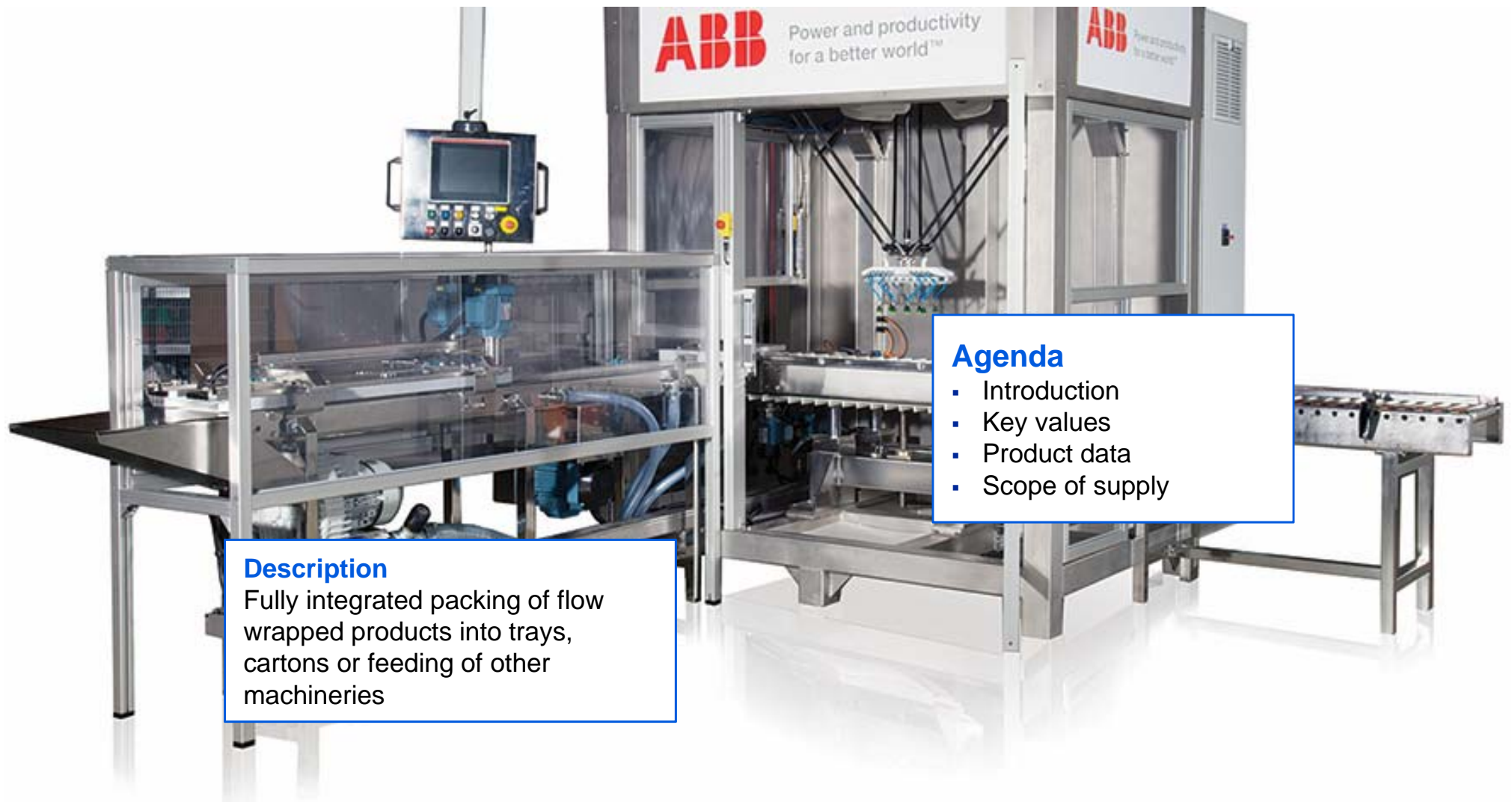
Klas Bengtsson, Product Management, ABB Robotics,

RacerPack

Packaging flow wraps in boxes

RacerPack

Putting flow wraps in the box



Description

Fully integrated packing of flow wrapped products into trays, cartons or feeding of other machineries

Agenda

- Introduction
- Key values
- Product data
- Scope of supply

RacerPack

Proven solution



Customer installation

Key selling points

- Replace manual labor
- Shorter change-over times and smaller footprint

Key values



Indexing belt with small footprint



450 PPM capacity per robot



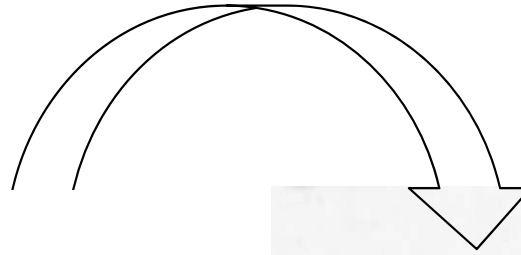
Belt change in 10 minutes



Lean design

Product data

Sizes



Product size

Length 50-200 mm

Width 25-120 mm

Height 6-60 mm

Carton sizes

Length: 100-400 (mm)

Width: 80-300 (mm)

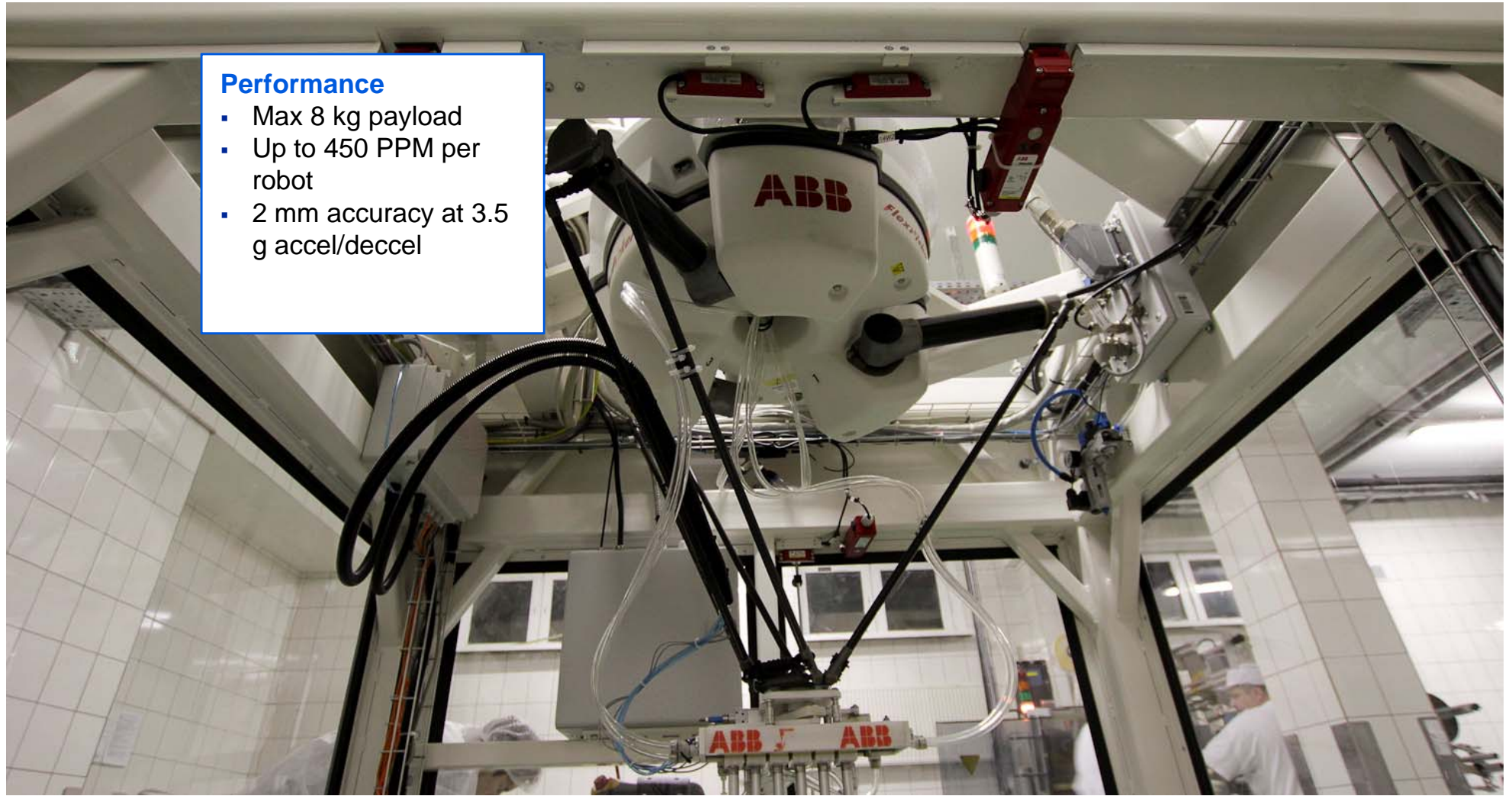
Height: 40-150 (mm)

Product data

Performance

Performance

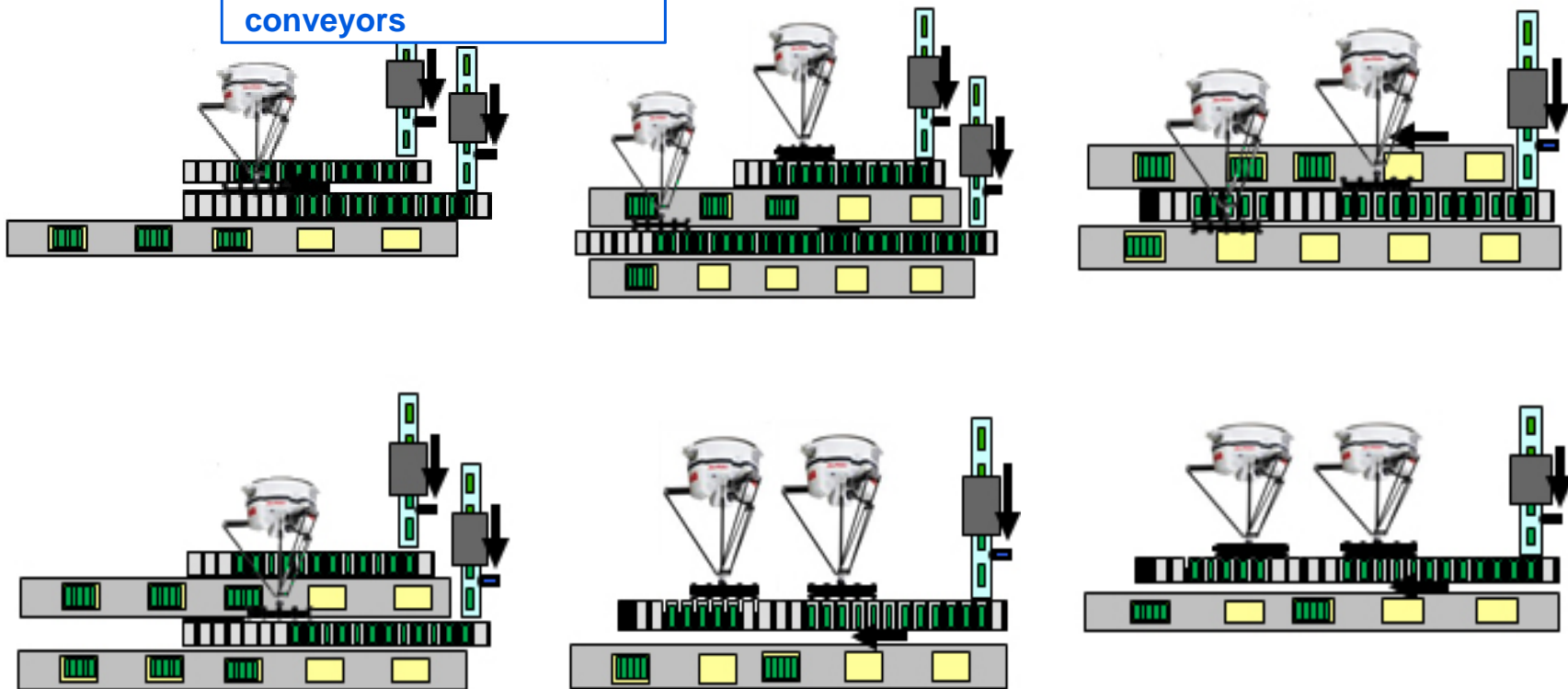
- Max 8 kg payload
- Up to 450 PPM per robot
- 2 mm accuracy at 3.5 g accel/deccel



Product data

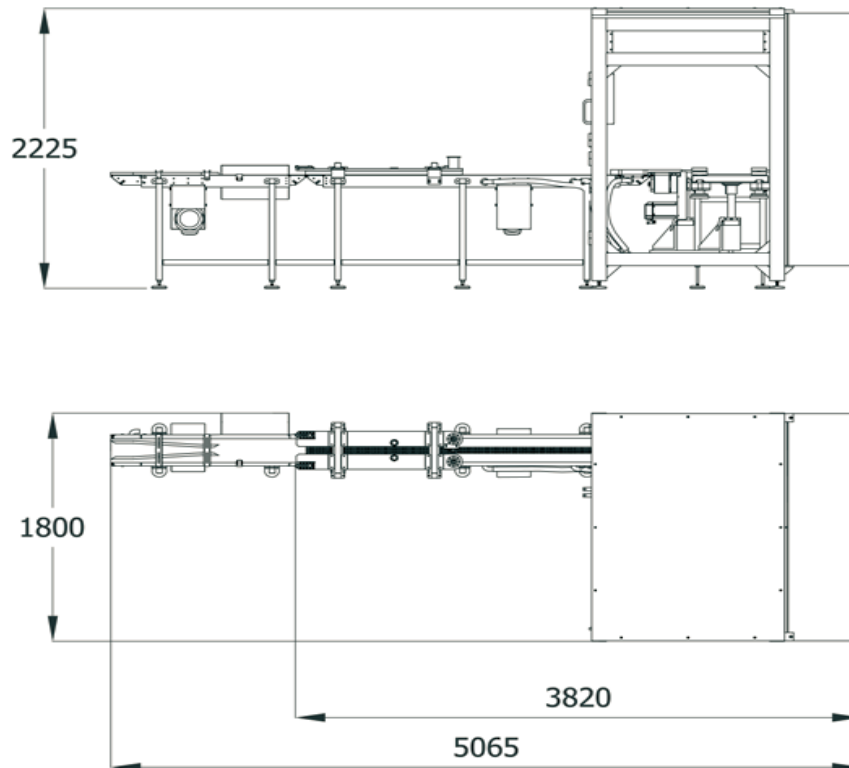
Configurations

Configure 1 or 2 robots,
indexing belts and
conveyors



Product data

Dimensions



Scope

What to order?

Order list

- Complete function package
- Modules
- Custom made parts

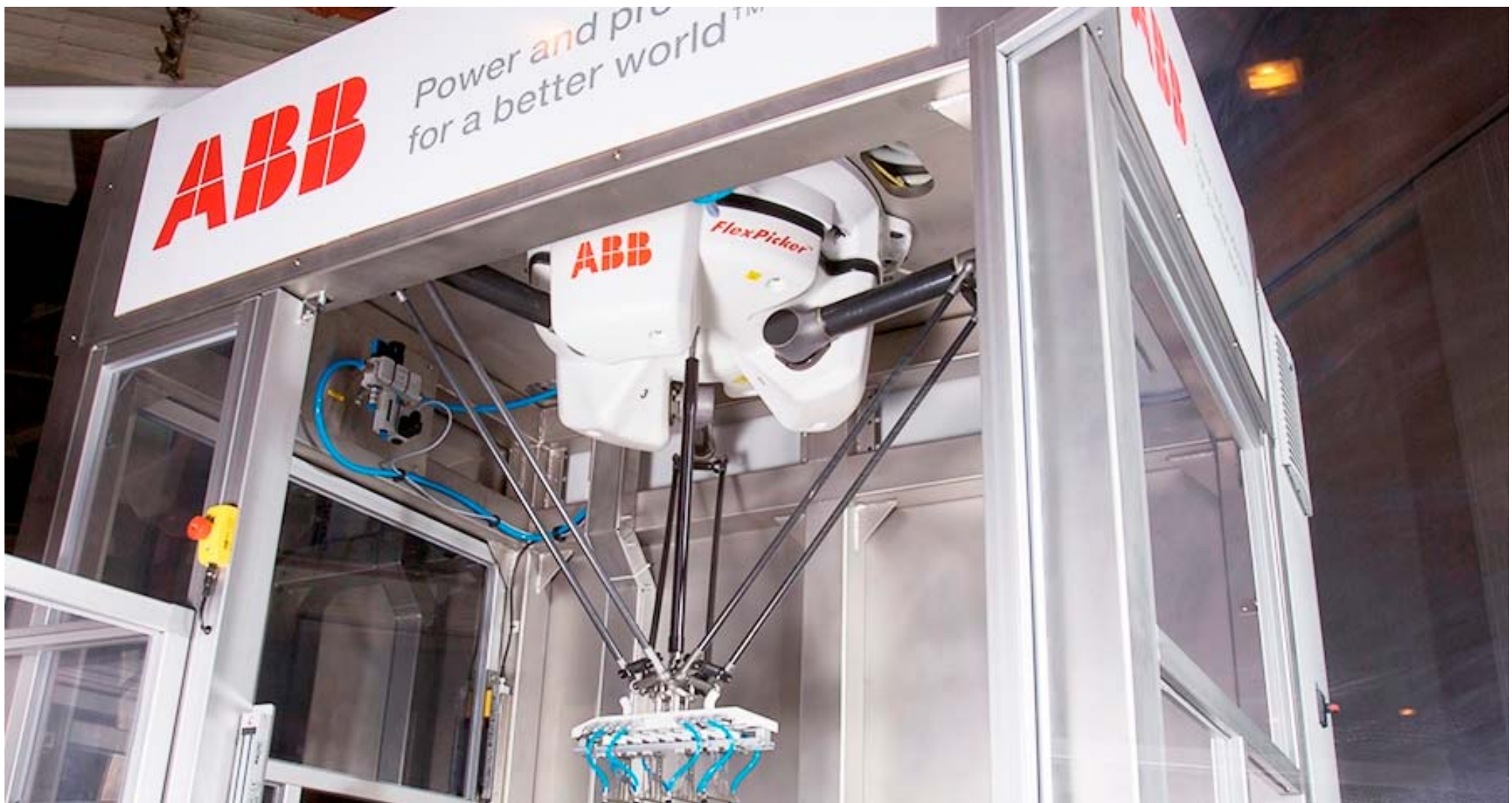
Options

- Stainless design
- Acceleration infeed
- Infeed conveyor high speed design
- 250 PPM version

Legend

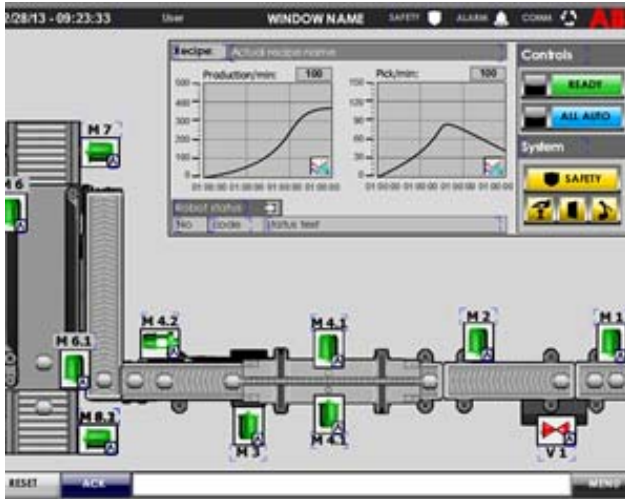
Scope

IRB 360 in frame



Scope

Software HMI, Panel and PLC



HMI

- User-friendly HMI with recipe handling for products for easy operation of the application
- All parameter settings are accessible from the HMI



Operator Panel

- Touch screen
- Start/Stop/Settings
- Panel on swing arm



PLC

- AC 500 integrated in control cabinet
- Control of software HMI and conveyors

Scope

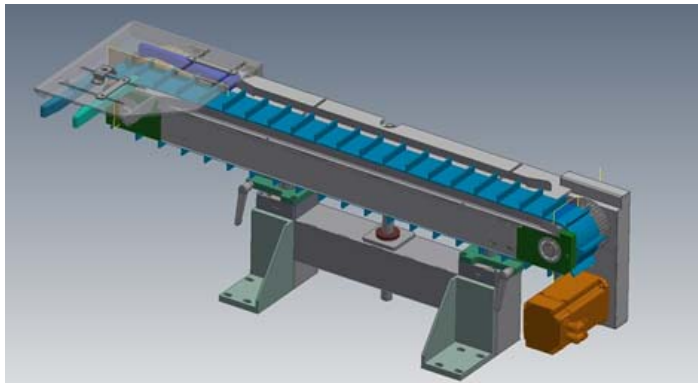
Customized modules



In feed conveyor



Gripper



Indexing conveyor with motor package



Carton conveyor

Power and productivity
for a better world™

