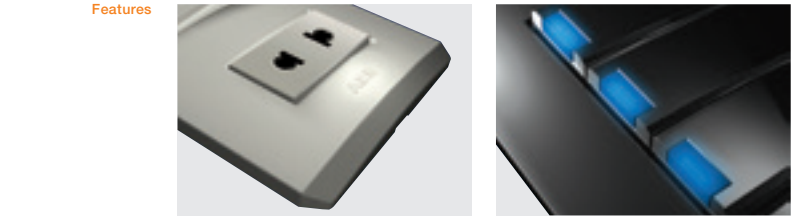
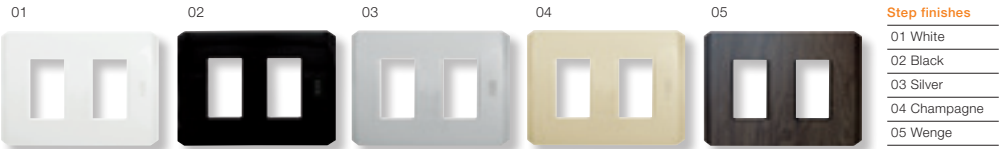




A step forward in design. The finishes of the Step series are modern, bright and innovative; White, Black, Silver, Champagne and Wenge in line with the most refined trends in decoration.



The frame of Step is generously sized at 112 x 80.5 mm to compensate for any imperfections when fitting boxes to walls.

The blue LED in the horizontal window of the pilot light switches has an innovative design that reduces energy consumption and increases its life cycle. A step forward in useful life and energy efficiency.

Contact us

ABB Thailand
161/1 SG Tower, 1st-4th Floor,
Soi Mahadlekluang 3, Rajdamri Road, Lumpini, Pathumwan
10330, Bangkok, Thailand
Phone: +66 2 665 1000
Fax: +66 2 6651043

ABB Vietnam
Km 9 National Road 1A,
Hoang Liet, Hoang Mai
Hanoi, Vietnam
Phone: +84 3861 1010
Fax: +84-24-38611009

C Copyright 2015 ABB. All rights reserved



Step A decisive step forward

Step A step forward in ergonomics and quality



ABB, the world leader in the manufacture and design of high quality switches, presents the new Step series. With over 100 years experience manufacturing switches, ABB has dedicated all its experience to ensuring that the Step series offers the Aesthetics and Quality that raise the level of basic switch range for the Home Electrical Equipment.

Ease of installation and robustness

The secret of installing/mounting switches well lies in their structure. The Step series offers a wide number of advantages for installation.

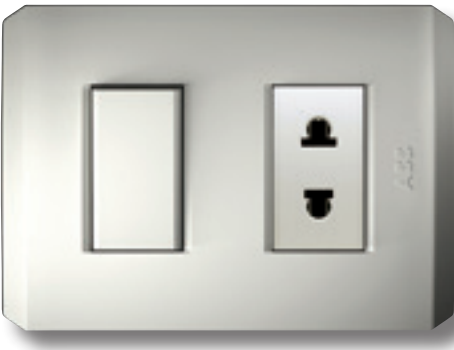


ABB has created the first plastic mounting plate that guarantees that the mechanisms and plate are fixed firmly throughout the life of the product.

In order to simplify the work and reduce installation time, ABB has developed new front-loading mechanisms that ensure safe assembly and exceptional steadiness during the life of the product.

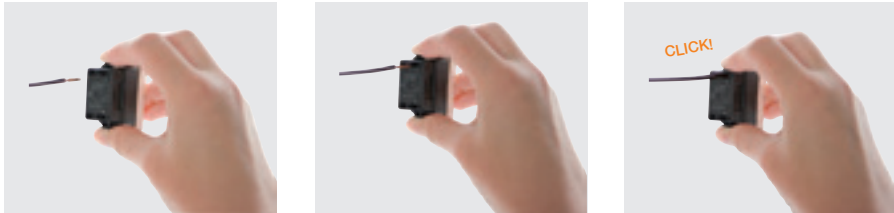
Solutions that make the task easier, safer and faster.

A step forward in convenience, quality and safety for installation.

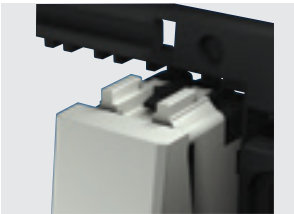


Step has a high-strength and high-rigidity reinforced mounting plate. With an exclusive system for fixing the mechanisms that prevents them from sinking or moving over time.

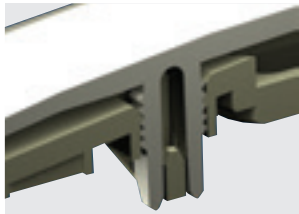
Automatic connection



- 1. Strip about 14 mm of cable and introduce in the terminal.
- 2. Press the pusher and insert the cable.
- 3. Release the pusher and check the fastening. To disconnect the cable, press the pusher again from up and down.



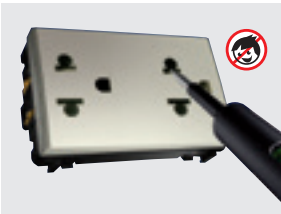
Robust and compact mechanisms
That are inserted from the front, intuitively, simply and without interference. The exclusive Step guiding system also allows the mechanisms to be extracted from the front without taking the mounting plate apart from the wall. We have reduced the depth of the mechanism to make wiring easier. A step forward in easy installation.



Frames
The frames are fitted with 3-position saw tooth clips that allow the height of the plate to be adjusted by up to 3 mm. The clips have 8 locking positions (2 per clip) to ensure that the switches and frames can be fitted independently of any unevenness or imperfection on the wall.



The Step rocker switches are connected at the back, creating a safety gap between the wires of the mechanisms. A step forward in safety. Ergonomic mechanisms with large 40 x 22 mm key.



In the Step series, all the sockets have a real childproof protection, guaranteeing the safety, especially of children, in the most adverse conditions and complying with IEC-60884.1.



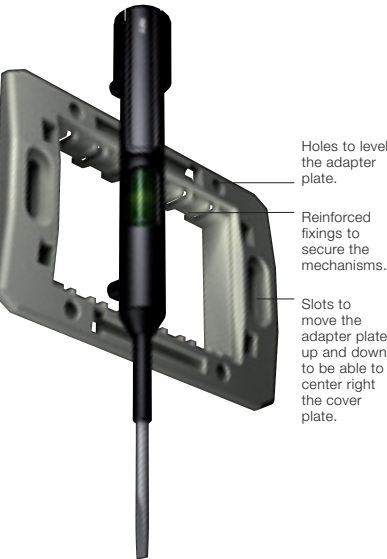
The connectors of the mechanisms allow the use of flexible cable of up to 12 AWG and wires of up to 10 AWG.



The raw material, exclusively used by ABB, has the highest thermal, mechanical and electrical resistance available on the market for a basic range, always ensuring the maximum safety of our installations. These high-performance materials guarantee a perfect installation of the mechanisms.

Easy installation

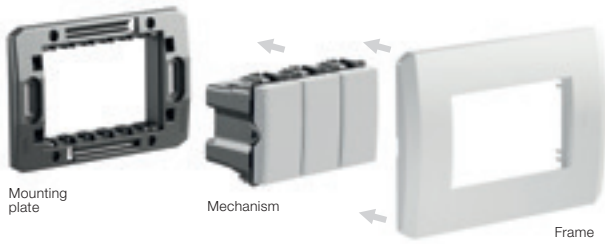
The mounting plate can be centred and leveled by the slots at the sides of the plate, position it correctly, however the pre-installation is done.



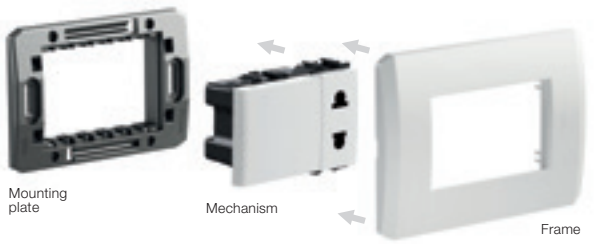
Holes to level the adapter plate.
Reinforced fixings to secure the mechanisms.
Slots to move the adapter plate up and down to be able to center right the cover plate.

Step

Composition Step Switch



Composition Step Socket outlet



Insertable mechanisms 1 module

Rocker switches

Description	Code	Technical Data
Rocker switch	N4101.A BP NP	10 AX ; 127 V~ - 250 V~
Rocker switch 2-way	N4102.A BP NP	10 AX ; 127 V~ - 250 V~
Intermediate switch	N4110.A BP NP	10 AX ; 127 V~ - 250 V~

Push buttons

Description	Code	Technical Data
Push button with bell symbol	N4104.A BP NP	10 A ; 127 V~ - 250 V~

Rockers switches with indicator lamp

Description	Code	Technical Data
Rocker switch	N4101.3A BP NP	10 AX ; 127 V~ - 250 V~
Rocker switch 2-way	N4102.3A BP NP	10 AX ; 127 V~ - 250 V~ With blue LED

Push buttons with indicator lamps

Description	Code	Technical Data
Push button with bell symbol	N4104.3A BP NP	10 A ; 127 V~ - 250 V~ With blue LED

Socket outlets

Description	Code	Technical Data
Nema type socket outlet 2P+T	N4128 BP NP	15 A ; 250 V~ Childproof

Description	Code	Technical Data
Socket outlet 2P Euro-American	N4135 BP NP	16 A ; 250 V~

Various

Description	Code	Technical Data
Blanking plate	N4100 BP NP	
Cable outlet	N4107 BP NP	
Buzzer	N4119 BP NP	8 VA ; 127 V~ - 250 V~ Tone dimming by an screw. Acoustic power at 1m: 75dB

Step

Insertable mechanisms 1 module

Telephone outlets

Description	Code	Technical Data
Telephone outlet with 4 contacts	N4117 BP NP	RJ11 with 4 contacts, category 3. Connection without screws. Comply with FCC, part 68, F.

Communication connectors

Description	Code	Technical Data
Universal data connection box with 8 contacts, category 5E (improved) UTP	N4118.5 BP NP	Frequency rate: 1-160 M Hz. Transmission rate: 1,2 Gb. sec. In compliance with FCC part 68, subpart, F.
Universal data connection box with 8 contacts, category 6 (improved) UTP	N4118.6 BP NP	Frequency rate: 1-160 M Hz. Transmission rate: 1,2 Gb. sec. In compliance with FCC part 68, subpart, F.

TV outlets

Description	Code	Technical Data
TV simple plug	N4150.7 BP NP	Socket for installation in star connection (without resistance EOL).
TV outlet	N4150 BP NP	Threaded connector. F type

Rotary dimmer

Description	Code	Technical Data
Rotary dimmer 1 module	N4160.E BP NP	230 V~ ; 50 Hz 60 - 500 W Overload and short circuit protection by means of a thermal fuse not rearmable.

Switches

Description	Code	Technical Data
Rocker switch 1P	N4201.A BP NP	10 AX ; 110 - 127 V~ ; 250 V~
Rocker switch 2P-way	N4202.A BP NP	10 AX ; 110 - 127 V~ ; 250 V~

Light switches

Description	Code	Technical Data
Rocker switch 1P	N4201.3A BP NP	10 AX ; 110 - 127 V~ ; 250 V~
Rocker switch 2P-way	N4202.3A BP NP	10 AX ; 110 - 127 V~ ; 250 V~

Socket outlets

Description	Code	Technical Data
Duplex socket outlet 2P+T	N4338 BP NP	16 A ; 250 V~ Child protection
Duplex socket outlet 2P+T	N4328 BP NP	15 A ; 127 - 250 V~ ; 50 - 60 Hz Child protection
SCHUKO socket outlet shuttered	N4288 BP NP	16 A ; 230 V~ With a safety system to avoid direct accidental contact. Protection class: IP21

Rectangular frames

Description	Code	Technical Data
Frame 1 module	N4371.1 BP NP PL	Frame with plastic mounting plate. Dimensions: 112 x 80,5 mm. With box n° 499.3
Frame 2 modules	N4372.1 CV WG	
Frame 2 modules	N4372.2	
Frame 3 modules	N4373.1	
Blanking plate	N4370	The plate can be mounted on a chasis. With pre-cut for wires.

Frames 4" x 4"

Description	Code	Technical Data
Frame 1 + 1 module	N4671.1 BP NP PL	Dimensions: 117 x 130 mm
Frame 2 + 2 modules	N4672.2 CV WG	
Frame 1 + 1 + 1 + 1 modules	N4672.4	
Frame 3 + 3 modules	N4673.6	
Blanking plate	N4670	The plate can be mounted on a chasis. With pre-cut for wires.