

# ABB DriveManager for SIMATIC

1.1.0.0 - Release notes

10.02.2016

## SUMMARY

The *ABB DriveManager for SIMATIC* enables users to configure and monitor ABB drives using Siemens PLCs. Here is collected necessary update information related to *ABB DriveManager for SIMATIC*.

## WARNINGS & NOTICES

**Warning1:** Even though, this package includes support for all Step 7 Basic versions from V5.4 and Step 7 Professional V13 (TIA Portal), package features were tested only with Step 7 Basic V5.5 and Step 7 Professional V11 SP1.

**Notice1:** Before installing newer version, user needs to uninstall older version of *ABB DriveManager for SIMATIC*.

## VERSION INFO

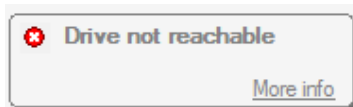
<i>ABB DriveManager for SIMATIC Installation package</i>	1.1.0.0
<i>ABB DriveManager for SIMATIC</i>	1.1.0.31141

## Functional changes

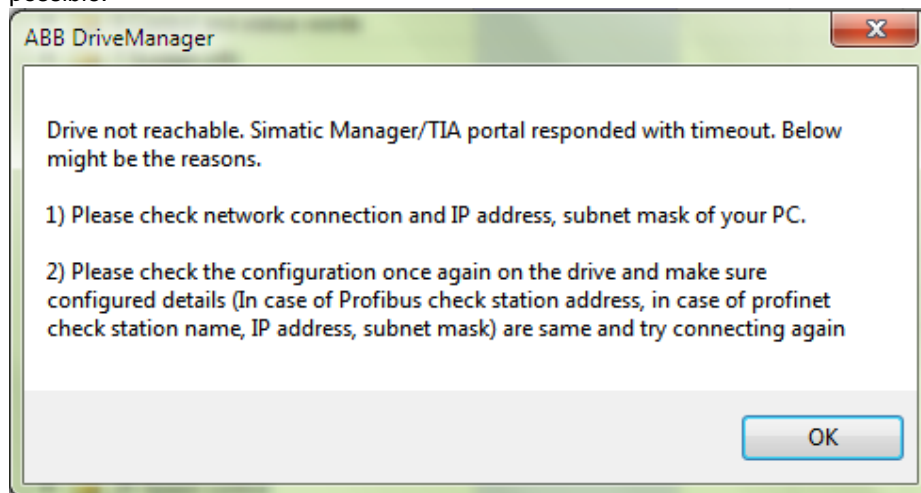
### *ABB DriveManager for SIMATIC*

#### Features

- **ACS380 Drive Support added**
- **Improved text display during connection problems**  
Now user can see better messages if not able to go online with drive. For e.g. In case if drive is not reachable



Click on more info provides possible reasons/workarounds why connection is not possible.



1.1.0.31141

# ABB DriveManager for SIMATIC

1.1.0.0 - Release notes

10.02.2016

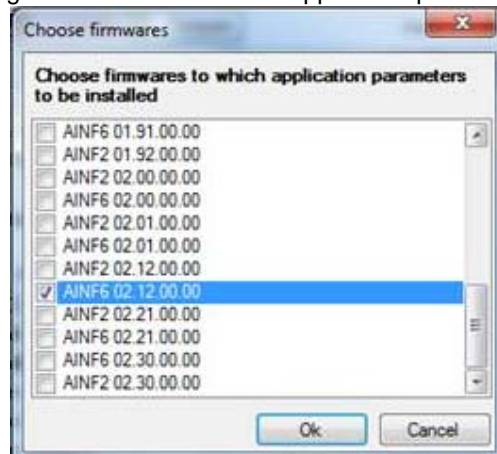
- **Better Diagnostics (log file creation)**

Now log files are created in this path

*%ProgramData%\ABB\DriveWare\DriveManagement\Logs*

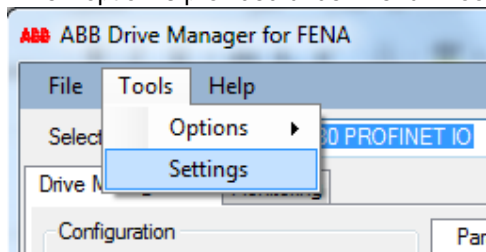
- **Now possible to install Application parameters to multiple firmware's**

Now user can install application parameters to multiple firmware's at once by choosing list of firmware's where application parameters are needed.



- **FENA check excluded for VPN connection**

A new option is provided under Menu> Tools> Settings.



If user is trying to connect to Siemens PLC via VPN connection and the FENA adapter version is 3.03 or later then this option has to be selected.



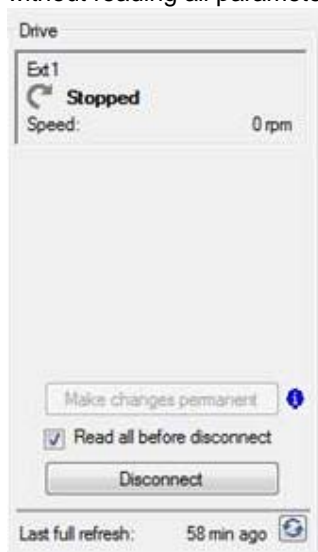
# ABB DriveManager for SIMATIC

1.1.0.0 - Release notes

10.02.2016

## - Read All before disconnect

While drive is online in Drive Manager, user can select the check box to read all parameters before disconnect. This option will be remembered when next time user connects to drive. If user doesn't select this option, drive will disconnect without reading all parameters.



## General

- Automatically add DriveManager exe to firewall exceptions list
- New firmware support

ACS580	ASCC2 1.40.0.0, 1.50.0.0, 1.60.0.0
ACS880	AINFX 2.01.0.0, 2.12.0.0, 2.21.0.0, 2.30.0.0
ACS380	AMCK6 1.50.0.0, 1.60.0.0
ACS355	FW 5100
ACS 810	UIFQ 2300
ACS 850	UIFI 2900
ACSM1	UMFI 1881, 1880
ACS 550	FW 316A


## Environment:

PLC	CPU 315-2 PN/DP, CPU 317-2 PN/DP, CPU 1516 -2PN/DP
	Firmware: V3.2
Profinet	FENA-11, FENA-21, FBPA-01 / V3.0.3, V3.0.5
Profibus	FBPA-01 / V3.0

# ABB DriveManager for SIMATIC

1.1.0.0 - Release notes

10.02.2016

<b>Known problems</b>	
<ul style="list-style-type: none"> <li>- German translations of some strings are missing</li> <li>- In Some windows XP machines this installation failed due to latest windows installer is not available. DriveManager at least need 3.1 version of windows installer</li> </ul> <p><i>Resolution - Please use this Zip file and install the latest windows installer</i></p>  <p>WindowsXP-KB9422 88-v3-x86.zip</p>	1.1.0.31141

<b>Supported drives (Complete list)</b>	
- List of drives supported on Profibus and Profinet	
<b>Drive type</b>	<b>Firmware versions</b>
ACS880	AINF0 1.1.0.0, AINF0 1.2.0.0, AINF0 1.10.0.0, AINF0 1.21.0.0, AINF0 1.30.0.0, AINF0 1.41.0.0, AINF0 1.52.0.0, AINF0 1.62.0.0, AINF2 1.52.0.0, AINF2 1.62.0.0, AINF4 1.52.0.0, AINF4 1.62.0.0, AINF6 1.62.0.0, AINFX 1.70.0.0, AINFX 1.71.0.0, AINFX 1.80.0.0, AINFX 1.91.0, AINFX 2.00 AINFX 2.01, AINFX 2.12 AINFX 2.21, AINFX 2.30
ACS580	ASCC2 1.21.0.0, ASCC2 1.30.2.0, ASCC2 1.31.2.0, ASCC2 1.40 ASCC2 1.50, ASCC2 1.60
ACS380	AMCK6 1.50, AMCK6 1.60
ACQ810	UIFQ1100, UIFQ2100, UIFQ2010, UIFQ2110, UIFQ2200, UIFQ 2300
ACS850	UIFI2020, UIFI2100, UIFI2110, UIFI2200, UIFI 2210, UIFI 2300, UIFI2400, UIFI 2500, UIFI2600, UIFI 2700, UIFI 2800, UIFI 2900
ACSM1 Motion and Speed	UMFI1480, UMFI1510, UMFI1600, UMFI1820, UMFI1832, UMFI 1840, UMFI 1880, UMFI 1881
ACS355	503A, 5040, 5060, 5090, 5100
- List of drives supported only on Profibus	
<b>Drive type</b>	<b>Firmware versions</b>
ACS550	313B, 313D, 314D, 314E, 316A