

INSTRUMENT TRANSFORMERS

BYZ-L

Indoor current transformer



The BYZ-L zero-sequence indoor current transformer is used for ground fault detection.

Product features

- 600 V, indoor
- 10 kV BIL
- 50 - 400 Hz
- Approximate weight: 150 lbs. (68 kg)
- UL Recognized Component: File No. E96461

Application

The BYZ-L zero-sequence indoor current transformer is used for ground fault detection. It is designed for zero-sequence overcurrent relaying schemes and for mounting in the cable compartment of metalclad switchgear. A phase imbalance in the outgoing cables, which pass through the transformer window, produces a secondary current in the BYZ-L.

Construction features

The oval-shaped ring-type core is insulated and toroidally wound with a fully distributed secondary winding. The complete unit is cast in polyurethane for added insulation and protection. Three 0.56" corner bolt holes facilitate mounting.

Secondary terminals

Secondary terminals are 10-32 stud-type with hardware.

Curves

Saturation and overcurrent curves are available upon request.

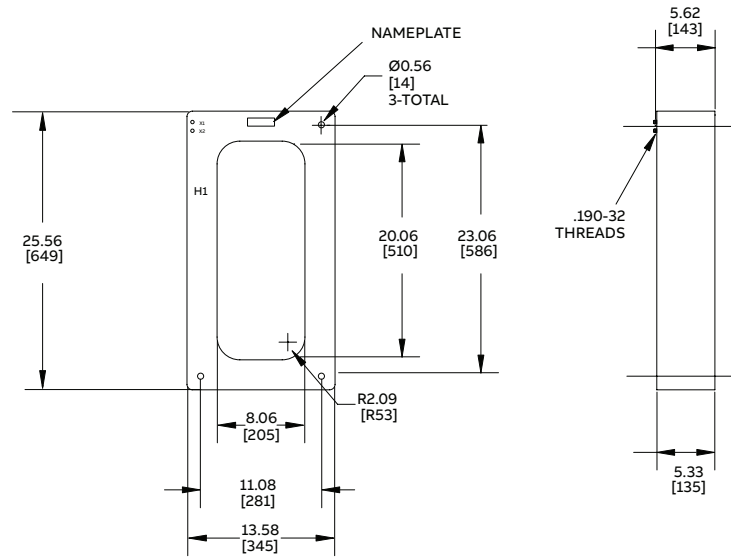
Test reports

Test reports are stored electronically and can be e-mailed in various formats at the time of shipment.

Standards

This unit meets IEEE C57.13-2016 and NEMA standards.

Unit dimensions (inches [mm])



Selection guide

Primary ampere rating	Rating factor		Thermal rating*	Mechanical rating*	IEEE relaying accuracy @ 60 Hz	Style number
	30° C	55° C				
50	2.0	1.5	100	180	C10	923A294G01
75	2.0	1.5	100	180	C20	923A294G02
100	2.0	1.5	100	180	C30	923A294G03
150	2.0	1.5	100	180	C50	923A294G04
200	2.0	1.5	100	180	C50	923A294G05
300	2.0	1.5	100	180	C100	923A294G06
400	2.0	1.5	100	180	C100	923A294G07
500	2.0	1.5	100	180	C200	923A294G08

* times rated current, 1 second

+ times rated current

Additional styles available upon request. Contact your ABB sales representative or call +1-252-827-3212 for more information.