

INSTRUMENT TRANSFORMERS

CSH

Indoor or outdoor current transformer



The CSH current transformer is designed for use in metering applications in single or multi-phase low voltage circuits.

Product features

- 600 volt indoor or outdoor
- 10 kV BIL, 25 - 60 Hertz
- 1.5" (38 mm) or 2.0" (51 mm) window diameter

Application

The CSH current transformer is designed for use in metering 600 volt circuits and available with a variety of different bases.

Construction and insulation

The ring-type core and fully distributed winding are assembled to a glass filled polypropylene window liner and injection molded in thermoplastic rubber. The thermoplastic rubber insulating material is permanently molded to the core and coil assembly, resulting in a compact unit with excellent mechanical, thermal, and dielectric characteristics.

Secondary terminals and cover

The CSH is supplied with embedded compression-type secondary terminals, a short circuit device, and a clear, rectangular snap-on cover suitable for locking

with a meter seal. This clear plastic cover allows a visual check of connections and is keyed to ensure the shorting clip is across the terminals when no wires are connected. This safety feature avoids dangerous voltages across the secondary terminals if the primary is energized. Terminals accommodate #14-6 wire and can also serve as a post-type connector by looping wire under the screw head.

Base

The optional base is constructed of corrosion-resistant aluminum and is secured to the encapsulated base support by four symmetrically located screws.

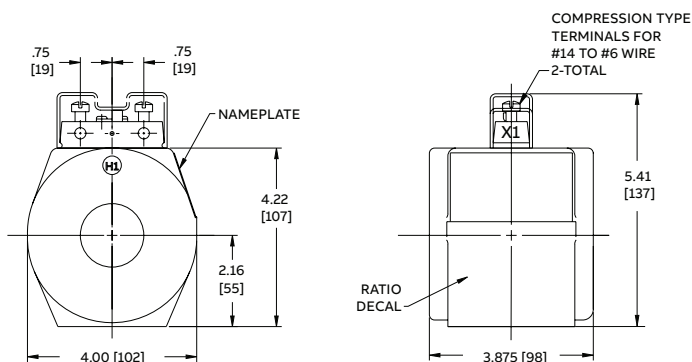
Test reports

Test reports are stored electronically and can be e-mailed in various formats at the time of shipment.

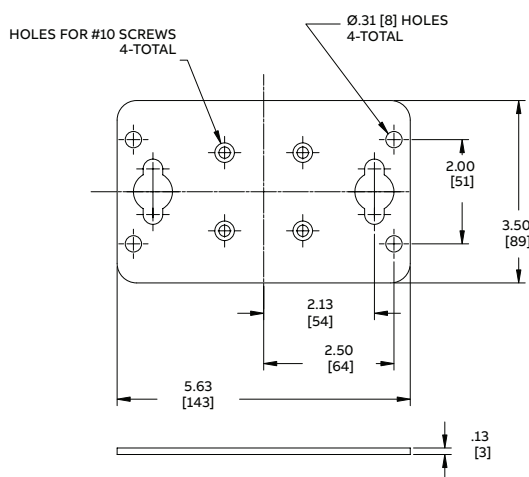
Standards

This unit meets or exceeds all requirements of IEEE C57.13-2016 and can be tested to other standards as requested.

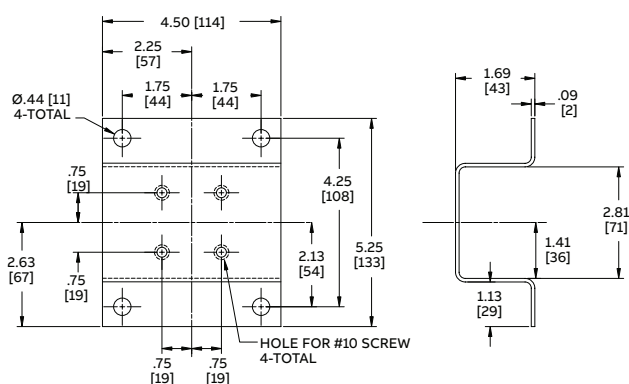
Dimensions (inches [mm])



Primary amperes	Window size		Weight (lbs)
	(in)	(mm)	
200	1.5	38	7.25
300	1.5	38	7.25
400	2.0	51	6.00
500	2.0	51	5.50
600	2.0	51	5.20
800	2.0	51	5.00



Flat base



High base

Selection guide

Primary ampere rating	Rating factor		IEEE metering accuracy @ 60 Hz	Style number		
	30°C	55°C		No base	Flat base	High base
200	3.0	2.2	0.3B-0.5	7526A90G01	7526A90G11	7526A90G21
300	2.0	1.5	0.3B-0.5	7526A90G02	7526A90G12	7526A90G22
400	2.0	1.5	0.3B-0.5	7526A90G03	7526A90G13	7526A90G23
500	2.0	1.5	0.3B-0.5	7526A90G04	7526A90G14	7526A90G24
600	2.0	1.5	0.3B-0.5	7526A90G05	7526A90G15	7526A90G25
800	1.5	1.2	0.3B-0.5	7526A90G06	7526A90G16	7526A90G26

Additional styles available upon request. Contact your ABB sales representative or call +1-252-827-3212 for more information.