



Breakers and Switches

Switches

DC rated switch-disconnectors

OTDC 16...32 Amperes

Power and productivity
for a better world™



DC rated switch-disconnectors OTDC

From 16 to 32 Amperes

Simply efficient



Brings reliability to higher voltages

OTDC switch-disconnectors for 16 to 32 Amperes have various DC voltage ratings with the same footprint area. The switches are specifically designed for DC use. Despite its compact size OTDC's insulation voltage ratings are very generous. Thanks to its modular design the rated operational voltage can be scaled according to your needs, all the way up to 1000 V. This ensures safe and reliable PV systems at a wide voltage range.

- ▶ With rising PV system voltages OTDC scales itself to the future

Thermal excellence – It's quite cool

OTDC meets the standard's thermal requirements even in elevated temperatures. Thanks to this OTDC is suitable for warm locations. Low resistive losses minimize the waste of energy, which helps in maximizing total energy efficiency of your PV system.

- ▶ Keeps your application cool and energy efficient

Simplicity in installation

The DC rated switch-disconnectors are suited for screw or DIN rail mounting. Tunnel terminals capture fine stranded wires and they are wide enough to allow wires up to 16 mm². Short-circuit bars as standard.

- ▶ Perfect and fast installations every time

ABB's complete offering

Always ready to meet any new demand from the market, ABB has developed a whole range of reliable products dedicated to photovoltaic applications and is therefore able to meet all installation requirements, from the strings on the direct current side to the alternate current grid connection point.

ABB's product range includes circuit breakers, switch-disconnectors, fuse disconnectors and fuses, residual current-operated circuit-breakers, grid connection relays, metering devices, surge arresters, consumer units and enclosures suitable for outdoor installation, all specially designed for these applications.

ABB can also provide a series of "plug & play" solutions, i.e. finished, wired and certified string boxes able to suit the requirements of a vast range of installations: from individual strings for residential applications to large photovoltaic plants.

Always ready to meet any new demand from the market, ABB has developed a whole range of reliable products dedicated to photovoltaic applications and is therefore able to meet all installation requirements, from the strings on the direct current side to the alternate current grid connection point.



Technical data

OTDC16...32

Technical data according to IEC 60947 for OTDC16...32 switch-disconnectors

Switch size		A	OTDC16	OTDC25	OTDC32
Rated insulation voltage $U_i^{1)}$	Pollution degree 2	V	1250	1250	1250
	Pollution degree 3	V	1000	1000	1000
Dielectric strength	50 Hz 1 min.	kV	6	6	6
Rated impulse withstand voltage		kV	8	8	8
Rated thermal current I_{th} DC-20	open air, normal conditions ²⁾	A	25	32	45
	enclosure 40°C	A	25	32	45
	enclosure 60°C	A	25	32	32
...with minimum cable or bar cross section	Cu	mm ²	4	6	10
Suitable wire size	Cu	mm ²	2.5-16	2.5-16	2.5-16
Rated operational current / poles in series DC-21B	660 V	A	16/2	25/2	32/2
	1000 V	A	16/3	25/3	32/3
	1000 V / 2 x 660 V ³⁾	A	16/4	25/4	32/4
Rated short-time withstand current, 1000 V, 1 s	R.M.S. -value I_{cw}	A	400	600	800
Power loss / pole	At rated current	W	0.15	0.3	0.5

¹⁾ When used with external handle. For use with direct mounted handle, see installation instructions for restrictions.

²⁾ Normal conditions defined in IEC 60947-1-6.1

³⁾ 1000 V with all the poles connected in series, 660 V with 2 poles in series

Ordering information

OTDC16...32

OTDC16...32F2

S07111



OTDC16...32F3

S07110



OTDC16...32F4

S07109



Switch-disconnectors OTDC_

Types OTDC16...32 include protected terminal clamps, IP 20. Shafts and handles need to be ordered separately. The type and the ordering numbers are for one piece.

Up to 660 VDC

Number of poles	I_{th} (open) [A]	Rated operat. current [A] DC 21B / 660 V	Type	Order number	Delivery batch [pcs]	Weight/unit [kg]
2	25	16	OTDC16F2	1SCA121454R1001	10	0.15
2	32	25	OTDC25F2	1SCA121455R1001	10	0.15
2	45	32	OTDC32F2	1SCA121456R1001	10	0.15

Up to 1000 VDC

Number of poles	I_{th} (open) [A]	Rated operat. current [A] DC 21B / 1000 V	Type	Order number	Delivery batch [pcs]	Weight/unit [kg]
3	25	16	OTDC16F3	1SCA121457R1001	10	0.20
3	32	25	OTDC25F3	1SCA121458R1001	10	0.20
3	45	32	OTDC32F3	1SCA121459R1001	10	0.20

Up to 1000 VDC or 2 x 660 VDC*)

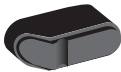
Number of poles	I_{th} (open) [A]	Rated operat. current [A] DC 21B V	Type	Order number	Delivery batch [pcs]	Weight/unit [kg]
4	25	16	OTDC16F4	1SCA121461R1001	10	0.25
4	32	25	OTDC25F4	1SCA121462R1001	10	0.25
4	45	32	OTDC32F4	1SCA121463R1001	10	0.25

*) 1000 V with all the poles in series, 660 V with 2 poles in series

Ordering information

Optional handles

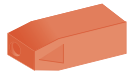
OHBS1_
S00684A



OHRs2_
S01368A



OHRs3_
S01369A



Handle knobs

Mounting directly to the switch, no shaft needed.
Padlockable with one padlock with bail diameter 5 mm, see the table below.

Colour	Handle length [mm]	Description	Type	Order number	Units/ type [pcs]	Weight/ unit [kg]
Black	31	Non-padlockable	OHBS1	1SCA109087R1001	10	
Black	31	Non-padlockable	OHBS1/1	1SCA109088R1001	1	
Red	31	Non-padlockable	OHRs1	1SCA109095R1001	10	
Red	31	Non-padlockable	OHRs1/1	1SCA109096R1001	1	
Black	40	Padlockable	OHBS2	1SCA109089R1001	10	
Black	40	Padlockable	OHBS2/1	1SCA109090R1001	1	
Red	40	Padlockable	OHRs2	1SCA108598R1001	10	
Red	40	Padlockable	OHRs2/1	1SCA108599R1001	1	
Black	39	Non-padlockable	OHBS3	1SCA108320R1001	10	
Black	39	Non-padlockable	OHBS3/1	1SCA108319R1001	1	
Red	39	Non-padlockable	OHRs3	1SCA108667R1001	10	
Red	39	Non-padlockable	OHRs3/1	1SCA108688R1001	1	

Handle type	Shaft through the handle	45 mm cut-out enable*)
OHBS1_ , OHRs1_	No	Yes
OHBS2_ , OHRs2_	No	Yes
OHBS3_ , OHRs3_	No	Yes

*) In I-position the handle shall remain within the cut-out height

Ordering information

Optional handles

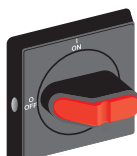
OH_1_
S00395A



OH_3_
S00697A



OH_2_
S00396A



OHBS2_AJEH



Selector type handles

Indication I-O and ON-OFF, for shaft diameter 6 mm, door drilling 22.5 mm.
The type and the ordering numbers are for one piece.

Colour	Type	Order number	Delivery batch [pcs]	Weight/unit [kg]
IP 54 handles, NEMA 1, suitable for switches OTDC16...32, OT16...40F				
Black	OHBS1AH	1SCA102680R1001	150	
Yellow-red	OHYS1AH	1SCA105290R1001	150	
Silver	OHSS1AH	1SCA105274R1001	150	
Grey	OHGS1AH	1SCA105261R1001	150	
Door interlock in ON-position.				
Black	OHBS1AH1	1SCA105210R1001	150	
Yellow-red	OHYS1AH1	1SCA105291R1001	150	
Silver	OHSS1AH1	1SCA105275R1001	150	
Grey	OHGS1AH1	1SCA105262R1001	150	
Padlockable with one padlock with bail diameter 5...6.3 mm.				
Black	OHBS3AH	1SCA105234R1001	150	
Yellow-red	OHYS3AH	1SCA105325R1001	150	
Silver	OHSS3AH	1SCA105283R1001	150	
Grey	OHGS3AH	1SCA105270R1001	150	
Padlockable with one padlock with bail diameter 5...6.3 mm, door interlock in ON-position.				
Black	OHBS3AH1	1SCA105235R1001	150	
Yellow-red	OHYS3AH1	1SCA105326R1001	150	
Silver	OHSS3AH1	1SCA105284R1001	150	
Grey	OHGS3AH1	1SCA105271R1001	150	
IP 65 handles, NEMA 1, 3R, 12, suitable for switches OTDC16...32, OT16...40F				
Padlockable with max. 3 padlocks with bail diameter 5...8 mm, door interlock in ON-position, defeatable.				
Black	OHBS2AJ	1SCA105213R1001	120	
Yellow-red	OHYS2AJ	1SCA105296R1001	120	
Silver	OHSS2AJ	1SCA105278R1001	120	
Grey	OHGS2AJ	1SCA105265R1001	120	
Padlockable with max. 3 padlocks with bail diameter 5...8 mm, door interlock in ON-position.				
Black	OHBS2AJ1	1SCA105215R1001	120	
Yellow-red	OHYS2AJ1	1SCA105297R1001	120	
Silver	OHSS2AJ1	1SCA105279R1001	120	
Grey	OHGS2AJ1	1SCA105266R1001	120	

Selector type handle with metal hasp

IP65 handles, NEMA 1, 3R, 12, suitable for switches OTDC16...32, OT16...40F

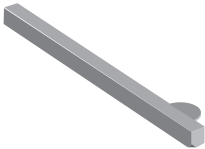
Padlockable with max. 3 padlocks, door interlock in the ON-position, defeatable.

Black	OHBS2AJEH	1SCA108230R1001	120
-------	-----------	-----------------	-----

Ordering information

Extended shafts

OXS6X_
S01026A



Extended shafts

The type and ordering numbers are for one piece. Shaft diameter 6mm

Shaft length [mm]	Type	Order number	Delivery Weight/	
			batch [pcs]	unit [kg]

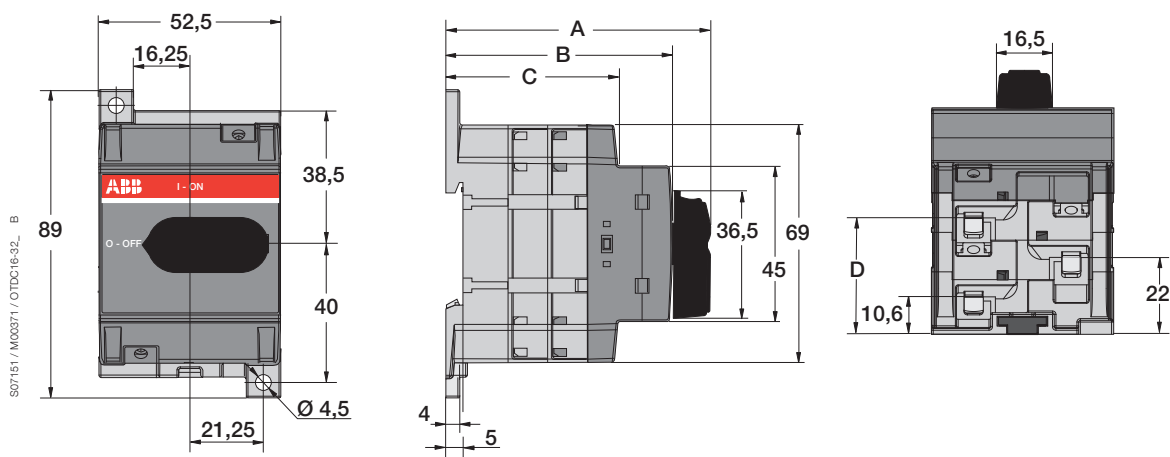
For selector type handles

85	OXS6X85	1SCA101647R1001	10	0.02
105	OXS6X105	1SCA108043R1001	10	0.02
120	OXS6X120	1SCA101654R1001	10	0.03
130	OXS6X130	1SCA101655R1001	10	0.03
160	OXS6X160	1SCA101656R1001	10	0.04

Dimension drawings

OTDC16...32

OTDC16...32 switch-disconnector



OTDC16...32				
Dimension [mm]				
Number of poles	A	B	C	D
2	66,2	54,1	38,3	22
3	77,6	65,5	49,7	33,4
4	89	76,9	61,1	44,8

Notes

Contact us

ABB Oy

Breakers and Switches

P.O. Box 622

FI-65101 Vaasa, Finland

Phone: +358 10 22 11

Fax: +358 10 22 45708

E-Mail: firstname.surname@fi.abb.com

www.abb.com

The technical data and dimensions are valid at the time of the printing. We reserve the right to subsequent alterations.

